



Epi News

San Diego Epiphyllum Society, Inc.

February 2022
Volume 47 Number 2



‘Pat Barrett’

Hybridizer: Richard Chadwick
Parentage: ‘Sun Goddess’ x ‘Marie Frances’
Size: Large

Photo by Jerry Moreau

San Diego Epiphyllum Society, Inc. (SDES)

P.O. Box 126127
 San Diego, CA 92112-6127
Epi News is published monthly by
 San Diego Epiphyllum Society, Inc.
 SDES Web Site: <https://sdepis.org/>

COPYRIGHT of by-line articles belong to the authors.
 Other contents, ©2022 SDES. All rights reserved.
 Photo credit SDES archives unless noted.

Editors — Jerry Moreau & Linda Sinkovic
EpiNews@sdepis.org
 Design & layout by Jerry Moreau

Membership:

Single \$15.00 per year
[https://checkout.square.site/
 pay/52076e42dc684d9a8d03f874b3a06e2c](https://checkout.square.site/pay/52076e42dc684d9a8d03f874b3a06e2c)

Dual \$20.00 per year
[https://checkout.square.site/
 pay/88eb5a5bdfb44cd7a0fbb422c28b5e35](https://checkout.square.site/pay/88eb5a5bdfb44cd7a0fbb422c28b5e35)

Have You Moved?

If you have moved or recently changed your physical OR email address, please update your address so that you can continue to receive your newsletter without interruption.

Send it to:
 San Diego Epiphyllum Society c/o Membership
 PO Box 126127 San Diego, CA 92112-6127

OR email Membership@sdepis.org
 OR for a faster response mail directly to Beth Jackson Membership Secretary—her address can be found in the membership roster

General Meetings are held on the second Wednesday of each month. We are doing our best to have a presence both in-person and online. The meeting begins at 7:30 p.m. and the pre-meeting workshop is at 7:00 p.m. The Zoom room will open at 7:00 p.m. Check your emails for instructions and links.

Board Meetings are the fourth Wednesday of the month at 7:00 p.m. also held online. All members are welcome to attend the board meeting. If you are interested in attending request the zoom link from the Membership Secretary, Correspondence Secretary, or the President.

Inside This Issue

President’s Corner	3
Meeting Program	3
Stay In Touch	4
Workshop Corner: Plants in the Know	5
Now Is The Time	5
Pat Barrett Passes	6
Get Your Facts First	7
George French	9
Mother’s Day Show	11
Safari Park Report	13
Off-Season Blooms	14
Epicacti Resources	15
One Last Thing	16

Calendar of Events

February	9	General Meeting
	12	Safari Park Work Party
	23	Board Meeting
	26	Safari Park Work Party
March	9	General Meeting
	12	Safari Park Work Party
	23	Board Meeting
	26	Safari Park Work Party

For the up to date calendar check out:
<http://sdepis.org/news-information/calendar/>



‘California Sunset’ FRE
 SDES archives

President's Corner



Happy Lunar New Year!!!
February 1st will be the first day of the new lunar year. This will be the year of the Tiger. In celebration, here is a picture by Don Patterson of his hybrid 'Imperial Tiger'.



This year is starting out differently than we had hoped it would. Due to the continued pandemic, we are back to meeting online only this month. We thought it would be best for the health and safety of our members. It's not ideal but we can make this work and make the best of it. Hopefully we will be back meeting online and in-person or our March meeting.

We have all made changes because of the pandemic, and one of the side effects has been to force us all into the 21st century. However, the Society needs help with this newer technology. If you have some skills with video, websites, online sales, zoom, etc. please come talk to me or any board member. We want to make and keep all of our meetings, programs, and other information online and available to all our members. I would also like to hear your ideas on how we can use technology better for the society.

Till next time,

Gretchen

Meeting Program

January's Program: We enjoyed a wonderful program on the Gardens of Balboa Park presented by Lucy Warren.

February's Program: The program hasn't been finalized at the time of completing this month's newsletter. We are all in for a wonderful that David has been planning for us.

Check your email for the Zoom link and information about the YouTube livestream.

The February general will be held online

We have all seen how easily the Omicron variant of COVID-19 has been spreading. As of writing this issue the variant has yet not peaked. Our hearts go out to everyone impacted.

To that end, the board of directors thought it better to hold the February General meeting online only. Come join us Wednesday February 9th online on Zoom. In addition, the February meeting will be live-streamed to YouTube and will be available at [San Diego Epiphyllum Society - YouTube](#) following the broadcast. So if you can't attend the meeting on Zoom or watch it live-streamed, you'll be able to tune in and see your epi friends at the meeting and watch the program being presented.

Please keep safe and take care of yourself. We care about you and your families' health and wellness. Conditions permitting, we are planning to be in-person for the March General meeting.



Keep In Touch

Members are the most important part of our society! Together we create more beauty for all to enjoy.

As in any group, we are more potent together. We have members all over the world! Although the epies are what bring us together at first, lifelong friendships are made in the society. Knowledge, plants, and passions are shared between members. And everyone has fun!

Corresponding Secretary Sal Castelltto Corresponding@sdepis.org

Membership Secretary Beth Jackson at 858-692-0314 or Membership@sdepis.org

Newsletter Editors Jerry Moreau at 619-208-7654 & Linda Sinkovic at EpiNews@sdepis.org

**God rest you merry gardeners
 Let nothing ye dismay,
 For Spring is soon to come again
 With lengthening of days,
 The sun will warm the solid once more
 And send Jack Frost away.
 Oh tidings of composting and Joy!
 Compost and joy!
 Oh tidings of composting and joy!**

From Addicted to Gardening by Tracy Raymond



'Dawn Of Hope' FRE
 Photo by Jerry Moreau

Get Well Wishes

Please keep these members in your thoughts and prayers.

Katie Lutz, Mildred Mikas,
 Jerry Moreau & Pat Neal

And to be mindful of any member, family, or friends who have or are suffering during the pandemic.

May we all be well and safe,
 until we meet again.

Safari Park All February 2022 Seniors Free

During the month of February, all visitors age 65 and older receive free admission to the Safari Park. Enjoy the sights on an Africa Tram, see the platypuses and other Aussie species at Walkabout Australia, wander through Tiger Trail, take a stroll around Mombasa Lagoon, and relax with refreshments on the patio at Kijamii Overlook. There's a world of sights to see—all at the Safari Park!

Seniors 65+ must present valid photo ID at turnstiles for free entry. Parking not included.

Support your passion, support the Society's collection at the San Diego Zoo Safari Park. Currently we have the world's largest public display of epiphyllum hybrids and epiphytic species on display. We currently have a very unique new display and to keep this going SDES needs money to make it happen. All money raised goes into the care of the collection and display. We are all volunteers who create and maintain the display because we are passionate about it. All donations are always welcome and greatly appreciated. Consider putting SDES & the epi collection/display in your will or trust.

Plants in the “Know”

From *Epi News* Vol 37, No. 8

By Ron Crain

I hear this kind of thing all the time: “Plants KNOW when to bloom.” Or, plants KNOW when it is time to go dormant, or drop their leaves, or produce new stems or do any number of other things that plants seem to know how to do. This strikes me as a curious way for people to refer to a thing entirely devoid of intellect. I say these kinds of things all the time too because I’m lazy and it’s an easy, although not entirely accurate, way to communicate a concept about how plants interact with their surroundings. It’s a subtle way of anthropomorphizing or projecting human-like qualities upon our plants, in some sense, like many of us tend to do with our house pets, myself included. When I say to my wife something like, “Oh look, Baby Cat is watching TV,” or “Baby Cat is playing mind games with Newbie” (my dog), I am observing their behavior from a human perspective and therefore project human-like values upon that behavior in a mostly erroneous way. The cat does not “watch TV,” or play mind games the way people do, no matter how much it seems like she does. It REALLY seems like she does, though.

When we anthropomorphize plants, it’s even more of a stretch than when we do so to our animals because while kitties and puppies and budgies and guppies have obviously achieved SOME widely varying levels of self-awareness and possess differing degrees of consciousness

(OK, maybe not guppies), our plants clearly have not. When I say things like “this hybrid epiphyllum “knows” that as the daylight hours lengthen in the winter and spring it is time to produce flower buds,” I am conscious of the fact that lacking a central nervous system and its attendant array of sensory organs, it is of course, impossible for an epi to “know” or be aware of anything, at least not in the anthropomorphic sense.

Plants can “know” about their environment only in the biochemical sense. Factors like day-length, gravity, temperature, directionality and/or intensity of their light source, moisture and/or nutrient content of their soil or potting medium, etc., interact in complex ways to affect levels and concentrations of chemical compounds and hormones that move around the plants and affect their growth and other functions. This enables plants to do things like growing towards a light source or for roots to grow “with” the force of gravity or towards an area of higher soil moisture or for leaves to form an abscission layer and drop when temperatures and/or day-length have lowered to a certain point in autumn.

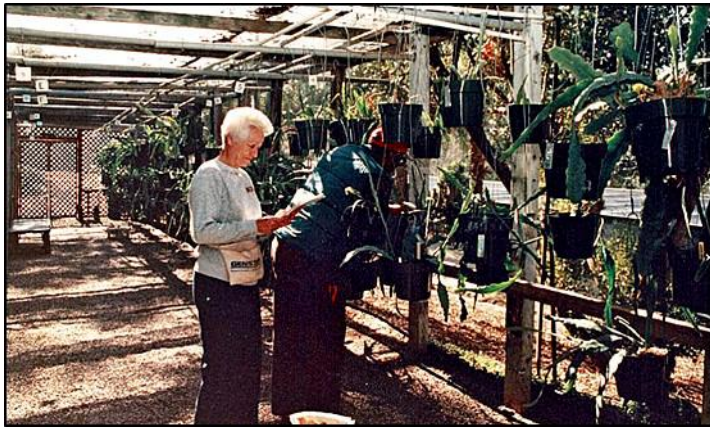
I’ll continue to refer to plants in this way, that they “know” things and maybe sometimes even put it in writing, but I know I’ll continue to be aware that this is simply a manner of speaking.

Now is the Time

- ✓ **Continue to watch weather reports for freezing conditions.** Do not prune frost damaged foliage until all threat of freeze has passed.
- ✓ **Watch for snails and slugs.**
- ✓ **Promote good bloom in mature epies** with a low nitrogen fertilizer (0-10-10). Reapply regularly if you use a liquid.
- ✓ **To promote new growth on newly potted or immature epies,** use a higher nitrogen fertilizer (5-10-10).
- ✓ **Protect against strong sun.** Don't allow plants to be exposed to intense sunlight; even the winter sun can damage epies. Unseasonably warm temperatures, extra water and/or shade may be needed. Epies love to be misted when the air is dry.
- ✓ **Protect budding plants** from bud drop by not moving plants.
- ✓ **Start planning your display for the Mother’s Day Show.** You can enter a full, half, or mini table display or flower arrangement based on the theme: ‘Sun, Sea, Sand and Epies’.

Former Park Coordinator Pat Barrett passes

by Patricia Neal



Pat Barrett and Nap Harris work on the Upper House inventory.



Pat at work in her home garden. Along with epies, irises and geraniums were her passions.

SDES recently learned that Honorary Life Member and former Park Coordinator Patricia Barrett passed in November at age 99. Pat and her husband Roy joined SDES in June 1986. Pat quickly volunteered and became a director as well as the banquet coordinator in 1987. In the following years she coordinated ten banquets and served as a board director for ten years.

As 2nd Vice President, Pat coordinated two Mother's Day Shows: 1989's 'Sunday in the Garden' and 1990's 'Circus Time.' She also entered flower arrangements and helped judge entries during other shows. For many years she was instrumental in helping with our annual sales. In addition, she coordinated the second garden caravan, assisted in S.D.-hosted EpiCons and coordinated a bus for SDES members to attend an EpiCon at Huntington Gardens.

As soon as she joined SDES she became a volunteer at the then Wild Animal Park and served as the fulltime coordinator from 1991 to 2001. In 1993 the Zoo and Wild Animal Park became certified as horticultural collections and Pat was responsible for inventorying the entire epiphyllum collection including each plant's exact location whether in the public display house or the work house

Pat was a member of several garden organizations including iris and geranium. Along with plants one of her big passions was competitive roller skating!

Pat's exceptional organizational skills, talents, energy and enthusiasm were a huge asset to SDES.



Pat shares a laugh with then-president Sean Minogue.



Whether roller skating (at left), hosting one of many SDES banquets (right), working in her home garden or at the park, Pat's dedication to her passions, her friends and to SDES enriched her



At the 1993 Garden Caravan at Gray-Davis Epiphyllums, Pat poses with then-newsletter editor Pat Neal. In 1988, Pat Barrett coordinated the second garden caravan held by SDES.

(Many thanks to Pat's great-nephew Kip Pitman for the photo of Pat roller skating. All other photos from SDES Archives.)



At left is 'Roy Barrett' and right is 'Pat Barrett'. Both flowers were hybridized and registered by Dick Chadwick.



Get Your Facts First

“Get your facts first, then you can distort them as much as you please...” Mark Twain

Article and photos by Linda Sinkovic

Some of you have been growing epi hybrids for a long time -- some certainly longer than I've been growing them. And you probably know the routine when explaining to new growers: “Yes, they come in every color except blue” and watch their disappointed faces. Many of the hybridizers I've known have considered a blue-flowered epi hybrid their goal, and have worked towards this goal for years. I mean, how cool would it be to have a blue-flowered epi?



So does that mean that I'm now going to announce a new, blue-flowered epi? Well, no.^{1,2} However if you want to grow a cactus with “blue”



Pseudorhipsalis amazonica.

flowers -- or at least with “blue-ish”³ pigment in the flowers -- you can grow *Pseudorhipsalis amazonica*.

Originally described in 1903 by Professor Karl M. Schumann who gave it the name *Wittia amazonica*, this plant was first

found in northeastern Peru. In 1913 Britton and Rose found another very similar plant in Panama and Colombia. Weirdly, the flowers were described as ‘wine colored’ and there is no mention of any blue in the flowers.

In 1982 David Hunt moved this genus into *Disocactus*.⁴ However, not everyone agreed because in 1982 Stephen Rauschert moved these plants into the newly created genus *Wittiocactus*.⁵ In 1993 Myron Kinnach added them back into *Disocactus* as a single species, *amazonicus*.⁶ In 2002, Ralf Bauer

split the species into subspecies and moved all them into the genus *Pseudorhipsalis*⁷ which is where they currently reside.⁸

As things stand today, there are 3 subspecies of *Pseudorhipsalis amazonica*. These are *P. amazonica* ssp *amazonica*,⁹ *P. amazonica* ssp *panamensis*¹⁰ and *P. amazonica* ssp *chocoensis*.^{11,12} The differences are geographical occurrence and flower color, as all the subspecies are found in rainforest.¹³ All have dark pink to magenta flowers, but *P. amazonica* ssp. *chocoensis* and *P. amazonica* ssp. *panamensis* also have dark violet to blue-ish outermost petals. The blue color often fades after the flower opens. *P. amazonica* ssp. *panamensis* usually flowers for me in May, though it has bloomed as late as the end of



P. amazonica bud & open flower

June.¹⁴

When the plant is not flowering, stems of *P. amazonica* and subspecies resemble a thin, flat stemmed *Rhipsalis* or *Epiphyllum*. The plant is a little challenging to grow, as it does not like temperatures below about 60°F / 15° C, and requires fairly high humidity; this means misting every day, unless you live in a humid climate. The plant likes a well draining mix and should not dry out.

Because it needs more attention, this might be not a plant for everyone. However if you provide the conditions it likes to keep it happy, it will reward you with colorful, small, “blue” flowers.

This will be my last article for a while. Stay safe and enjoy your plants and flowers.

Continued next page

GYFF Continued...

Notes:

*1 The chances of a blue-flowered epi hybrid arising solely from hybridization are really very small, and short of genetic engineering (e.g. inserting genes) a blue flowered epi hybrid remains unlikely. Even so, inserting genes is not a foolproof process; Suntory has been working on creating a blue rose using this method since 1990, and the rose currently available is more purple than blue.

*2 This is because the pigment in cacti (and in all other members of the order Caryophyllales) is a type of *betalin* -- producing a red to purple color -- rather than a type of *anthocyanin* -- red to purple to blue or black -- which is found in other orders of plants.

*3 I am saying “blue-ish” here rather than “blue” because I agree with Ron Crain, who says “... the shading of its petal tips tends more toward the blue-violet.” See “*Pseudorhipsalis amazonica* Gives Me the Blues -- Sort Of”, in October 2012 *Epi News*.

*4 He had to change the name because *Wittia* was invalid, having been used already as a name for a genus of moths (yes the flying insects). I don't know the reasoning for moving them into *Disocactus*.

*5 A German botanist. He thought these plants were too different from the others already in *Disocactus*, therefore they needed to be in their own genus. Thus, *Wittiocactus*.

*6 Whereas he said *Wittiocactus* was more like *Disocactus* than it was like *Rhipsalis*, so therefore it belonged in *Disocactus* rather than *Pseudorhipsalis* (which was thought at the time to be closely related to *Rhipsalis*). In a way he was right, because molecular phylogenetic studies shows *Pseudorhipsalis* as a close relation to *Disocactus*.

*7 One of the reasons for the move was that this species (and subspecies) occurs in conditions more like those where *Pseudorhipsalis* grow (warm, low altitude, humid) than where *Disocactus* occur (cool, humid, cloud forest). There are other reasons; see Bauer (2003a).

*8 This has been backed up by molecular phylogenetic analysis; see Korotkova et al (2017). Also see “Get Your Facts First” in March 2003 *Epi News*.

*9 Found in Ecuador, Peru, southern Colombia and far western Brazil.

*10 Found in Costa Rica, Panama, and the northern states of Colombia and of Venezuela.

*11 Found in the western state of Chocó, Colombia.

*12 Recently a plant was found in eastern Brazil, in the state of Pará, which has been provisionally identified as *P. amazonica* ssp. *amazonica*., See Zappi et al (2021) for more information.

*13 *P. amazonica* ssp. *panamensis* is also found in “seasonal forest”.

*14 My plant lives in a greenhouse year round because night time temperatures drop below 60°F most of the year.

References:

- Bauer, R. 2003a. “The genus *Pseudorhipsalis* Britton & Rose”, *Haseltonia* 9, 94-120.
- Bauer, R. 2003b. “A synopsis of the tribe Hylocereeae F. Buxb.” *Cactaceae Systematics Initiatives* 17, 3-63.
- Britton, N.L. and Rose, J.N. *The Cactaceae*, Carnegie Institution of Washington 1923, available at : http://publicationsonline.carnegiescience.edu/publications_online/cactaceae/default.html
- Crain, R. 2012. “*Pseudorhipsalis amazonica* Gives Me the Blues -- Sort Of”, *San Diego Epi News* 37 (10), 4-5.
- Cruz, M. Á, S. Arias, & T. Terrazas, 2016. “Molecular phylogeny and taxonomy of the genus *Disocactus* (Cactaceae), based upon the DNA sequences of six chloroplast markers”, *Willdenowia* 46, 145-164. www.bioone.org/doi/full/10.3372/wi.46.46112
- Hunt, D. 1982. “Nomenclature”, *The Cactus and Succulent Journal of Great Britain* 44(1), 2.
- Hunt, D. and N.P. Taylor, 1991. “Notes on miscellaneous genera of Cactaceae”, *Bradleya* 9, 81-92.
- Hunt, D., et al, 2006. *The New Cactus Lexicon*, ISBN 0 9538134 4 4
- Kimnach, M. 1993. “The Genus *Disocactus*”, *Haseltonia* 1, 95-139.
- Korotkova, N., T. Borsch, and S. Arias. 2017. “A phylogenetic framework for the Hylocereeae (Cactaceae) and implications for the circumscription of the genera”, *Phytotaxa* 327(1), 1-46.
- Schumann, K. 1903. *Monatsschrift für Kakteenkunde*, 117. Available at: <https://ia800304.us.archive.org/3/items/monatsschriftf1903schu/monatsschriftf1903schu.pdf>
- Sinkovic, L. 2020. “Get Your Facts First”, *San Diego Epi News* 45(3), 12-13.
- Tanaka, Y., N. Sasaki, & A. Ohmiya. 2008. “Biosynthesis of plant pigments: anthocyanins, betalins and carotenoids”, *The Plant Journal* 54, 733-749.
- Zappi, D., R. Barbosa-Silva, & N.P. Taylor. 2021. “Notes on *Pseudorhipsalis amazonica* (Cactaceae-Hylocereeae) from eastern Amazônia, Brazil”, *Bradleya* 39, 111-115. https://www.suntory.com/sic/research/s_bluerose/story/, accessed 07 Jan 2022.

George French

Why do we honor George French in February? We honor him in February because this is his birthday month.

Who was George French? He was a hybridizer who lived in Point Loma. He was one of the Society's founding members and served as president. He was an active member until his death. George gave so much to the society over the years, and he continues to give to us through his hybrids that bring us joy.

One of George's famous crosses is 'Clown' x 'Lady Ruffles'. Of the 45 hybrids that were registered from this cross, almost all the flowers were either predominantly purple, purple and red or red and with some white. But of those registered hybrids from this cross a few were yellow: 'Daniel', 'Dijonnaise', 'Golden Splendor', 'Kazoo', 'Kirsten Pelleymounter', 'Luteo', 'Myrah', & 'Princess Kelly S'.



'Clown'



'Lady Ruffles'



'Daniel'



'Dijonnaise'



'Golden Splendor'



'Kazoo'



'Kirsten Pelleymounter'



'Luteo'



'Princess Kelly S'



San Diego Epiphyllum Society's
Annual Mother's Day Show and Sale
Sunday, May 8, 2022
11 a.m. to 4 p.m.
Casa del Prado, Balboa Park
Pre-show Sale on Saturday, May 7 10 a.m. to 4 p.m.

'Sun, Sea, Sand and Epies'

Mother's Day Show in planning stages

By Patricia Neal, Mother's Day Show Coordinator

Our annual Mother's Day Show is just around the corner and we're planning on holding our show and sale in person this year. It will be the first show in three years.

While it's impossible to know what's going to happen next with COVID, we're going to go ahead with our plans for an in-person event.

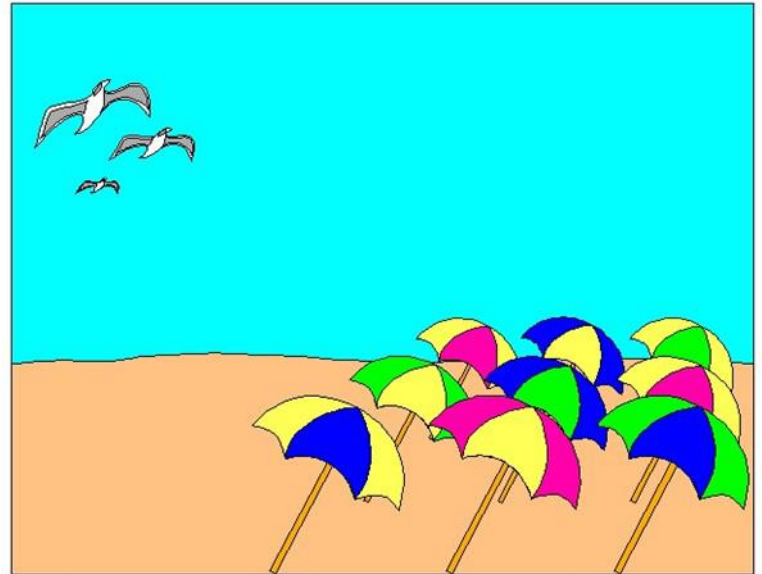
This year our theme is 'Sun, Sea, Sand and Epies'. This theme celebrates our love of epies along with our ideal coastal climate where epies thrive. The theme provides a lot of variety for creative types because it can include many different aspects -- deep sea life, surfing, sailing, mermaids, sea dragons, beach living, shell collecting, ocean conservation and snorkeling to name a few.

Our last scheduled show in 2020 was canceled only weeks before the day and everyone's plans came to a screeching halt. We were going to celebrate SDES' 50th Birthday with a look back at previous themes and asked members to select one of those themes for their tables and arrangements.

We've had a variety of themes over the years and some of them involved many elaborate displays and hours and hours of preparation. Many of us were looking forward to seeing how everyone would represent an old theme. While we had to abandon this show, we'll put the 50th birthday theme on hold for now and perhaps re-visit it for our 55th birthday

Since our last show in 2019, we've welcomed a lot of new members who have never seen a Mother's Day Show. It will be a pleasure to share with them our spectacular displays, arrangements and flowers.

In upcoming issues of *Epi News* we'll review the guidelines for shows held in Balboa Park and the various categories open for competition. If you are new to SDES, please know that you are welcome to create a display using the theme. It doesn't have to be anything large – you can do a small mini-display or an arrangement or go larger with a half or full table. Don't worry about not having a lot of flowering epies because

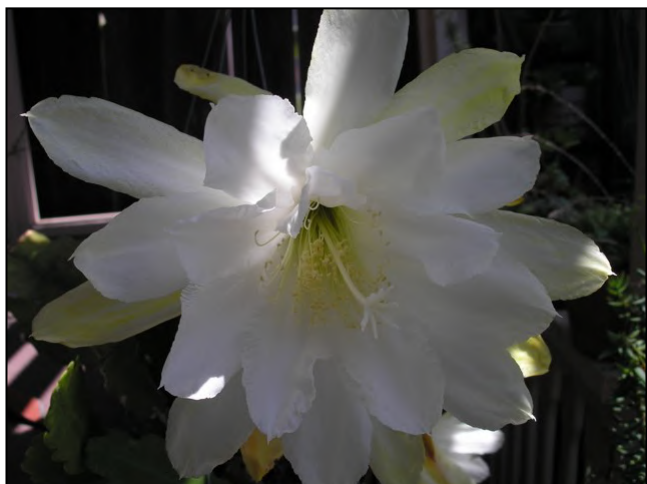


members bring in lots of extra flowers that you can use for your tables and arrangements. In fact, one of the categories is for novices! You could be a winner at your first show.

You also don't have to do a themed display, because we have categories set aside for flowers only – such as a table for small epies, new hybrids, a Society table where members who don't have a display can place up to six flowers and of course, the People's Choice table where everyone can select one flower to be voted on as 'the favorite' of our visitors.

More on all of this next month! In the meantime, mark your calendar. Saturday May 7 is our outdoor pre-show sale from 10 a.m. to 4 p.m. with show set up beginning at 4 p.m. in Room 101. Sunday May 8 we'll start gathering at the Casa del Prado gate early so that we're ready to finish set-up when the gates are unlocked at 8 a.m.





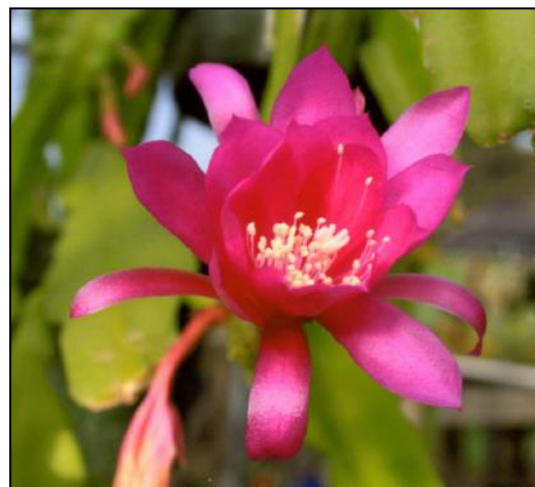
'Winter Olympics' WC



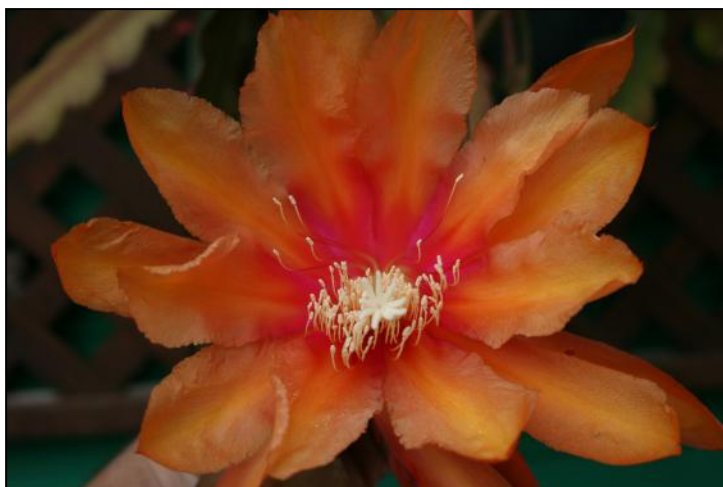
'Olympic Gold' FB



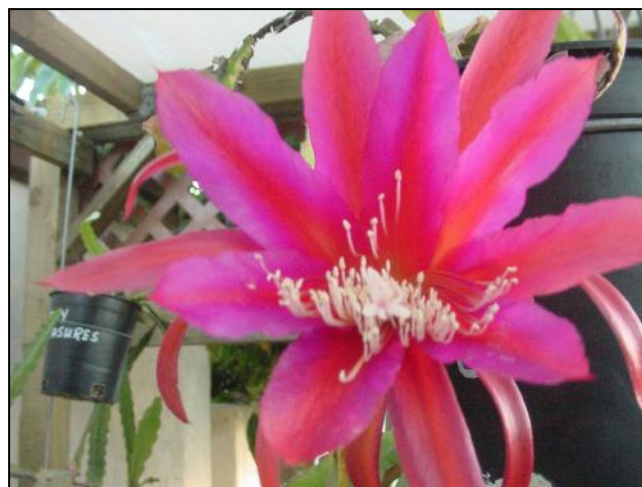
'Winter Flame' HATH
SDES archive



'Winter Grace' MP
Photo by Mark Piette



'Carnival' CLDG



'Touch Of Spring' WC
Photo by Roger Chapin

Safari Park Epi Collection & Display

by Jerry Moreau

It's been fun and cool at the park in January. We had some rain which help the plants tremendously. We got all the blooming fertilizing done. Now we watch for buds and wait for the blooms. To keep us excited we have had some off-season blooms. Thanks to Paula we had a donation of a wheelbarrow. Other than that not much else to report this month.

Helping out were Barb Alvarez, Sandra Chapin, Ron & Velma Crain, David Cheever, Cindy Decker, Dean Delibertis, Marie Dempewolf, Forrest Ehbrecht, Jeff Hendershot, Dennis Hughes, Beth Jackson, Betsy & Jerry Markle, Ellen McCollum, Jerry Moreau, Paula Reynolds, Tim Paule, and Paul van der Ploeg.



Below are some George French hybrids that have been named for condors at the Safari Park. Top left going clockwise are 'Kaweah', 'Molloko', 'Tecuya', & 'Sisquoc'.



Photo by Roger Chapin



Photo by Jerry Moreau



Photo by Mike Davis



Photo by Jerry Moreau

Details of How To Become A Volunteer at the Safari Park
can be found on our website. If you have any questions contact Jerry Moreau.
Click on <https://sdepis.org/welcome-to-sdes/epiphyllums/volunteering/>

Off-Season Blooms

This list is a bit of informal research of off-season epi blooms. Here you can track which epis have been blooming consistently off-season over the years. If you would like to add to the research and list which epis have been blooming in your yard, email the editors with your list of off-season blooms and species.

Blooming Off-Season

Heny Brandenburg (San Diego): ‘Bling Bling’, ‘Clarity’s Linnea’, ‘Double Take’, ‘DTO’, ‘Eddie Huey’, ‘Golden Due’, ‘Kiwi Dress Rehearsal’, ‘Rudolf’s Delight’, ‘Rudolf’s Surprise’, ‘Thirty Heartbeats’, ‘Thirty Wonders’

Sandra Chapin (Rancho Bernardo): ‘Jalisco Flirt’, ‘Guiding Star’, ‘Lisa Paetz’, ‘Ramona Paetz’

Ron & Velma Crain (Chula Vista): ‘Felcino Fairy’, ‘Jemo’

Beth Jackson (San Diego): ‘Guiding Star’

Barb Landon (Manhattan Beach): ‘Golden Due’

Michal McKee (Escondido): ‘Gold Charm’

Jerry Moreau (San Diego): ‘Jemo’

Patricia Neal (San Diego): ‘Fumiko Kida’, ‘Vive Rouge’

Pat Shea (Port Charlotte, FL): ‘Felcino Flair’

Safari Park (San Pasqual Valley): ‘Bruno Förster’, ‘DTO’

Paula Reynolds (San Diego): ‘Crimson Arrow’

Linda Sinkovic (Santa Cruz): ‘Herbert S. Irwin’

Blooming Species

Barb Alarez (Lemon Grove): *Rhipsalis pilocarpa*, *R. rhombea*

Celine Dion (Concord): *R. triangularis*

Safari Park (San Pasqual Valley): *Disocactus macranthus*, *Lepismium cruciforme*, *Rhipsalis dissimilis*, *R. goebeliana*, *R. mesembryanthemoides*

Linda Sinkovic (Santa Cruz): *R. floccosa* ssp. *pulvinigera*, *R. mesembryanthemoides*, *R. pilocarpa*



‘DTO’
Photo by Jerry Moreau



‘Guiding Star’
Photo by Beth Jackson



‘Jemo’
Photo by Velma Crain



‘Golden Due’
Photo by Barb Landon

Epi News Submissions

- News of interest to SDES membership, brief articles about our members, or our community are welcome.
- Send any articles, photos, and questions.
- Send submissions as a Word or Google document. Items can also be sent as text pasted into an email body. No PDFs
- Please limit formatting. Avoid excessive bolding or tabs. Avoid words in all CAPS. Please proofread and spellcheck, esp. names.
- Send photos as JPEGs attached in an email to submit to the Editor.
- All photos need caption and photographer's name. Photos need photographer's permission.
- Use of photos is at Editor's discretion.
- Send videos as MP4 or as a YouTube link. Videos must have videographer's permission.
- Materials and submissions need contributor's name.
- All submissions are at the editor's discretion.
- Submissions are due by the 15th of the month for inclusion in the following month's *Epi News*.
- If you are not sure? Send it anyway. Email the editors at: EpiNews@sdepis.org

Mission Statement

SDES is a community of epi growers who encourage the study of epies and the interchange of ideas on growing, displaying, and collecting epies and its related species.

SDES Officers

President	Gretchen Ward
1st Vice President	David Cheever
2nd Vice President	Patricia Neal
Treasurer	Gerry Mikas
Recording Sec.	Carmela Griswold
Corresponding Sec.	Sal Castellitto
Membership Sec.	Beth Jackson
Immediate Past Pres.	Cindy Decker
Director 2022-23	Gilbert Hatfield
Director 2022-23	Mildred Mikas
Director 2022-23	Tim Paule
Director 2021-22	Paula Reynolds
Director 2021-22	Lauren Burnette

Resources

As a benefit to members here is a list of resources for members. If you know of any resources you would like to have included, contact the editors.

Epi Nurseries:

Epi Galleria — Mark Piette
<http://www.epigalleria.com/>

Epi Haven <https://epihaven.com/>

Epiphyllum World — Don Cravalho
<http://stores.ebay.com/epiphyllum-world>

Garden Jewels Nursery — Katie Lutz
<http://gardenjewelsnursery.com/>

Heny's Epiphyllums — Heny Brandenburg
<https://www.facebook.com/henysepiphyllums/>

Kakteen Haage — Ulrich Haage
<http://www.kakteen-haage.de/>
Passionate gardener since 1685

Pacific Epiphyllum — Chris Welcher
<http://www.pacificepiphyllum.com/>

Plant Societies:

Cactus & Succulent Society of America

<https://cactusandsucculentsociety.org/>

SDES is an affiliate member. SDES members are welcome at meetings and webinars. See website for more information.

Epiphyllum Society of America

1st Tuesday of every month except in December or January @ 7:30 p.m.

<http://epiphyllums.org/>

San Diego Bromeliad Society

2nd Saturday of the month @ 10:00 a.m.

<http://www.sandiegobromeliadsociety.org/>

San Francisco Epiphyllum Society

1st Thursday of the month @ 7:30 p.m.

<http://www.sfepi.org/>

South Bay Epiphyllum Society

2nd Tuesday of each month @ 7:30 p.m.

<https://www.facebook.com/groups/511560205668403>

One Last Thing



'Looking For Love' DB



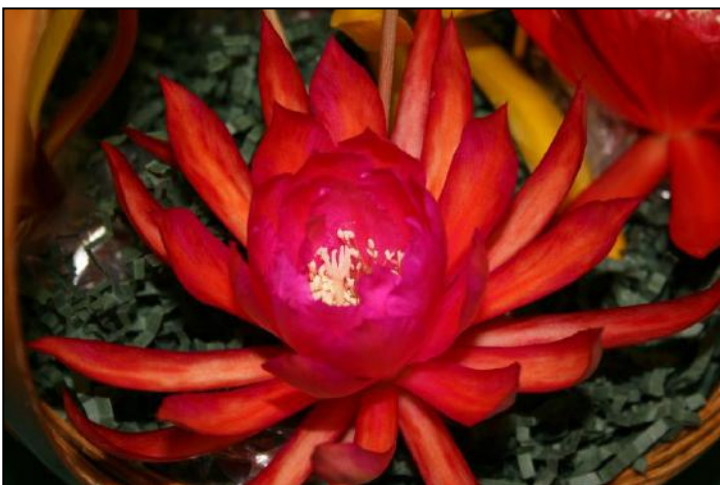
'Falling In Love' AB



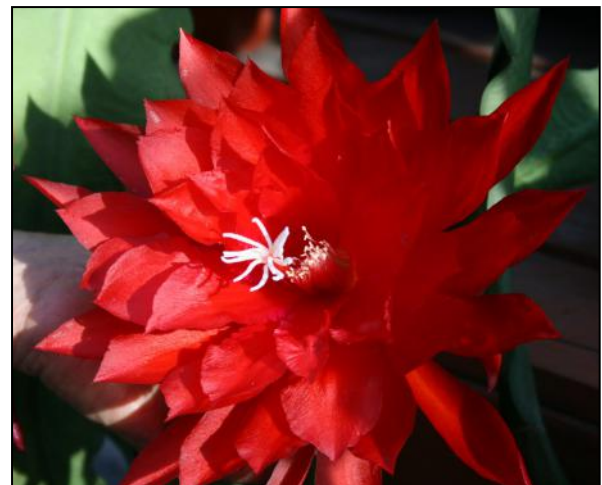
'Lover Boy' DP



'Lover' FOB



'Latin Lover' BHM



'Lothario' DP