



Epi News

San Diego Epiphyllum Society, Inc.

January 2024
Volume 49 Number 1



'Frida Kahlo'

'Best In Show' 2023 Photo Contest Award Winner

Size: Large

Hybridizer: WATTS (PITT), 1994

Photographer: Evelyn Avinante

San Diego Epiphyllum Society, Inc. (SDES)

P.O. Box 126127
 San Diego, CA 92112-6127
Epi News is published monthly by
 San Diego Epiphyllum Society, Inc.
 SDES Website: <https://sdepis.org/>

Copyrights

Copyrights of byline articles belong to the authors. Other contents ©2024 SDES. All rights reserved. Photo credit SDES archives unless noted.

Editor: JK Hendershot
EpiNews@sdepis.org
 Design and layout: JK Hendershot

Membership

Single \$15.00 per year.
 Dual \$20.00 per year.
<https://san-diego-epiphyllum-soc.square.site/>

Have You Moved?

If you have moved or recently changed your physical OR email address, please update your address so that you can continue to receive your newsletter without interruption.

Send your updates to:
 San Diego Epiphyllum Society c/o Membership
 P.O. Box 126127, San Diego, CA 92112-6127.

OR email Membership@sdepis.org
 For faster response mail directly to Beth Jackson, Membership Secretary—her address can be found in the membership roster.

Inside This Issue

President’s Corner/Meeting Program	3
Keeping in Touch	4
Now Is the Time + Refreshment Schedule	5
SDES Member Profile Jim Nones	6-8
EpiCon XVII Registration Form and link	9
Mark Your Calendars/ Vote to Change By-Laws	10
Vote to Change SDES By-Laws	11
EpiCon History and Early EpiCon Events	12-13
SDES Annual Holiday Banquet Held	14-16
Society Officers, Directors and Coordinators	17
Safari Park Report	18
Wish List + Off Season Blooms and Species	19
Epi Resource Page	20
It’s Here—2024 Mother’s Day Show Theme	21
We Leave You With This—Hybrids by Jim Nones	22

Calendar of Events

January	6	Safari Park Work Party ¹
	10	General Meeting
	20	Safari Park Work Party
	24	Board Meeting
February	3	Safari Park Work Party
	14	General Meeting
	17	Safari Park Work Party
	28	Board Meeting
March	2	Safari Park Work Party
	13	General Meeting
	16	Safari Park Work Party
	27	Board Meeting
May	11-12	Mother’s Day Show and Sale
	25	EpiCon 2024, Saturday, May 25 th

¹ Additional Work Parties held every Tuesday.

General Meetings are held on the second Wednesday of each month. We are doing our best to have a presence both in person and online. The meeting begins at 7:30 p.m. and the pre-meeting workshop is at 7:00 p.m. The Zoom room will open at 7:00 p.m. Check your email for instructions and links. Board Meetings are the fourth Wednesday of the month at 7:00 p.m., and are online. All members are welcome to attend the board meeting. If you are interested in attending, please request the online zoom link from the Membership Secretary, the Correspondence Secretary, or the President.



**On the Cover:
 January 2024**

Photo:
 Evelyn Avinante

The 2023 ‘Best In Show’ photo contest honor was awarded to Evelyn Avinante of San Diego, CA for the submission of her photograph of ‘Frida Kahlo’. The flower’s parentage is ‘Show Boat’ x ‘Virginia Strong’. Congrats to Evelyn on her beautiful photo.

President's Corner — *From President David Cheever*



I hope you all had a wonderful Holiday and New Years with your friends and family this year. How quickly the year passed. It was nice seeing all of you that attended our Holiday Banquet in December.

So here is the Year 2023 in Review - We had over 60 days where we volunteered at the Safari Park with around 2,300 hours worked. We had in-person monthly membership meetings with Zoom viewing. We worked at the Del Mar Spring Garden Show. We had four \$900 scholarships—two for Cuyamaca College, and two for Southwestern College. We worked two San Diego Tortoise and Turtles Adoption and Plant Sales and we attended the Cuyamaca College Garden Sale. We had the Safari Park two-day plant and cutting sale.

We hosted the Mother's Day Show and Sale that was highly successful. We held the Epi Photo Caravan where we visited the gardens of Linda and Keith Bennett, Ken Maculan, Mildred and Gerry Mikas, and Carmela and Steve Griswold and had a luncheon. We hosted the End of Summer Member Appreciation Potluck with wonderful food and drink. We worked the Del Mar Fall Garden Show. We elected a new board of directors for 2024, and approved a new budget for 2024/2025. Marie Dempewolf was awarded the "Roger Chapin Award". This year we're having the Safari Park Sale, our Mother's Day Show & Sale and we are hosting EpiCon XVII, in May 2024. We have a lot of great events coming up for 2024!

And please consider volunteering whenever and however you can. It is important that we all contribute to make our Society the best it can be. Your contribution is important and makes a difference. Our Society is nothing without you. See you at the meeting. David Cheever, President

Meeting Program

David

Pre-Meeting Workshop: This month's workshop topic is yet to be determined. The workshop will be held in Casa Del Prado Room 104 at 7:00 p.m.

December Program: In lieu of our monthly meeting our Holiday Banquet and Installation of Officers was held on Wednesday, December 13, 2023 at The Butcher Shop Steakhouse in San Diego, CA.

January Program: Our January monthly meeting will be held in person and via Zoom on Wednesday, January 10th. The meeting topic will be "Cool Season Gardening", prerecorded by the Master Gardener Association of Alameda County. Learn how to be a more effective gardener during the cooler months. In Casa Del Prado Room 101 at 7:30 p.m. Pre-meeting workshop Room 104, 7:00 p.m. Zoom begins at 7:00 p.m. for socializing, and the online meeting will join the live meeting at 7:30 p.m.



(L): Marie Dempewolf receives the 'Roger Chapin Award' for her volunteer service to the Society.

(R): David Cheever presents a certificate of recognition to honor Jerry Moreau and his years of service at the Safari Park.



Photos: JK Hendershot

We Are Keeping in Touch

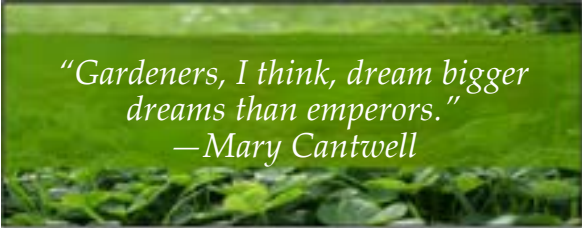
Our members are the most important part of our society. Together we create more beauty to enjoy.

As with any group, we are more effective and stronger when we are unified together—and our membership spans the globe! Although the epies are what bring us together at first, lifelong friendships are made in the society. Knowledge, plants, passions, and stories of those who came before us are shared between members—and everyone has fun!

Corresponding Secretary: Sal Castellitto Corresponding@sdepis.org

Membership Secretary: Beth Jackson at 858-692-0314 or Membership@sdepis.org

Newsletter Editor: JK Hendershot at 619-301-3587 or EpiNews@sdepis.org



*"Gardeners, I think, dream bigger dreams than emperors."
—Mary Cantwell*



'Wild Ginger'

Photo: Carmela Griswold

We Need Your Help

If you have epies (cuttings or plants), succulents, interesting garden items, or other plants you would like to donate to stock and increase the variety of items on our raffle table, we need your help. To make a donation or to obtain more information on how you can help, please contact director, and raffle table coordinator, Paula Reynolds via email at paularey@aol.com with your ideas and questions.



Native to Brazil *Rhipsalis* ssp. *pilocarpa*. Photo: Carmela Griswold

Remember the Society—Support your passion, support the Society's collection at the San Diego Zoo Safari Park. Currently, we have the world's largest collection of epiphyllum hybrids and epiphytic species on public display. We also have a very unique new display, and to keep it intact SDES needs additional funding to maintain it. All money raised goes toward the care of the collection and display. We are all volunteers who create and upkeep the display because we are passionate about it. All donations are always welcome and greatly appreciated. Consider putting SDES and the epiphyllum collection in your will or trust.

Now Is the Time—Seasonal Checklist

- ✓ **Begin to feed with low or no nitrogen fertilizer**, such as “Hi Bloom” or “Bloom”. Low/no nitrogen fertilizers will have label ratings around 0-10-10 or 2-10-10. Either liquid or time-released granules can be used. If liquid is used, another application may be needed in a month. Those plants that are not large enough to bloom can be fertilized with a higher nitrogen content, such as 5-10-10.
- ✓ **Watch for pests.** Keep plants free of debris where pests can breed and hide. Wet weather is snail and slug weather. Bait or hand pick them. Spray with insecticides only when necessary and follow directions carefully.
- ✓ **Protect epies from freezing temperatures.** New tender growth is especially susceptible to colder temperatures and winter winds. Be sure to take the measures and precautions necessary to protect them.
- ✓ **Prune out unproductive and unsightly growth** to allow more energy to be used by newer and healthier branches. However, if you live in an area where your epies will be exposed to more freezing nights, this unproductive or damaged growth will help protect the healthier growth from the elements. So, you may want to forgo pruning for a bit longer.
- ✓ **Let epies enjoy the winter rains.** As long as your epies are in loose draining soil, the rains won’t hurt them and will help wash out the fertilizer salts that can build up in potted plants. If you have epies sitting on shelves that are not of the wire shelving type or if they are on tables, make sure they’re not sitting in puddles of water after heavy rains. If you collect rain water for future use, store in covered opaque containers to prevent algae build-up and mosquito larvae infestation.
- ✓ **Pick ripe apples (seed pods).** After removing the seeds from the pod, they can be planted immediately without having to be dried out. However, artificial light and heat may be needed to encourage germination.
- ✓ **Do not repot plants that you want to bloom this spring.** Some buds are already starting their earliest formative stages. Once buds set, take precautions to avoid rearranging your plants. Moving plants—even in their early stages—can cause forming buds to drop. If you want to rearrange them, be cautious if you do it now.



‘Sea Horses’
Photo: Jim Nones



Monthly Refreshment Schedule

January	C—G	July	Society
February	H—L	August	H—L
March	M—Q	September	M—Q
April	R—U	October	R—U
May	V—B	November	V—B
June	C—G	December	Banquet

SDES Monthly Member Highlight—Jim Nones



Featured Member Jim Nones winning best unregistered hybrid 2018. Photo: Jerry Moreau.

I recently had a chance to catch up with Jim Nones after an ESA meeting at the Arboretum. Jim is a member of SDES and the ESA—where he has held many offices over the years. Jim resides in Los Angeles, CA. and is also a hybridizer whose crosses are highly sought after. Jim agreed to sit down for an interview so our readers around the world could have the opportunity to get to know him a little better.

Jim, tell us a little about yourself—where you grew up and what it was like? I’m Philippine born, the youngest of six children and our family was able to immigrate on a US Naval Ship the *USS Barrett* to Los Angeles because my father, Capt. Benito Nones was in the US Army. Upon arriving to Los Angeles, I attended schools in the Mideast Side—Echo Park and Silver Lake areas. Looking back, I realized that the community and surrounding areas were already well integrated considering I had Latino, Black, and other Asian-Pacific classmates. Mind you, this was in the mid 50s, to early 60s.

Wow, what an interesting story—it’s hard to imagine the sacrifices parents made in leaving their homes and families, to give their children a better life in America. Now, let’s switch gears and talk about what kind of work you do—or did, if you’re retired. First, let me give you a little background and context. In the mid 70s, two things happened that transformed the course of my life—participation in Werner Erhard Seminar Training known as EST, and pursuing my dream as an artist. EST was a popular movement of self-improvement, self-realization, a bit of Zen, Scientology, and common sense. Many celebrities were involved. They even made a satirical movie starring Burt Reynolds. Words like integrity, responsibility, acknowledgement, acceptance, and making a difference, just took on a different and deeper meaning.

Just before turning 30, I was emboldened to resign from a well-paying job to pursue a profession as a street artist (see two original pieces of artwork below left and center). I didn’t want to be a senior in my 60s and regret I didn’t venture into my lifelong dream of being an artist. I studied from grammar school to college. I gave myself five years to make it, a starving artist I never was, but I lasted seven years in a feast or famine situation. I participated in street fairs during weekends, and created my paintings on weekdays.

I did have my share of success. My biggest thrill was meeting and selling three of my paintings to my favorite singer, the “Queen of Disco” Donna Summer. Collectors also included actors, Mickey Rooney Richard Chamberlain, and Benihana restaurant owner, Rocky Aioke. I had been represented by Century City Art Gallery. My designs were reproduced and royalties paid. *Continued on the following page*



Original Art (l.) ‘Courtesan with Rubic’s Cube’ & (c.) ‘Pointer Sisters’. (r.) Our Lady of Grace, backyard shrine.

SDES Monthly Member Highlight—Jim Nones (Continued)



Jim taking a moment for a photo at Home Depot.

Photos: Courtesy of Jim Nones

In my fourth year, I started to developed a breathing problem. I was in and out of hospitals with asthma. Unbeknownst to myself and the doctors formaldehyde was an ingredient in gesso paint, a primer for raw canvas. I was given a choice to give up my art or shorten my life if I didn't. I was a casualty of occupational hazards that people in the arts suffered like potters, photographers, and painters.

Today at 77, by choice, I'm in my eighth year as a plant specialist at a Home Depot nursery, working Friday to Sunday, in a garden that is forever changing with new flowers as the seasons change. I get to engage with customers of all ages—kids, seniors, first-time gardeners, and landscapers. Questions on differences between potting and garden soil, annuals versus perennials—or what makes fertilizers and insecticides organic or not. I interact with co-workers, most under the age of twenty-five. “Bro”, “Dude”, “Mr. Jim”, and even a fist bump are a common way of greeting. And jargon—a world away—and so foreign from my own. I think all of these things—including being on my feet for eight hours and lifting bags of mulch, plays a large part in a improved cognitive and physical health. A perfect fit for me or any other senior.

That must have been an amazing time in your life being an artist in LA in the late-seventies and early-eighties! We've gone from the “Queen of Disco” to the Arts—to the Happiest Place on Earth (Home Depot) in less than three minutes. I am sure working with Millennials can be a bit challenging at times. I always say “don't ‘Bro’ me you don't know me” but that's just me. So let's shift gears now and have you tell our readers how you got interested in epies. I saw an ad in the LA Times regarding the ESA's Show and Sale and the rest was history. I've been involved with the Epiphyllum Society of America since 1999. Within five years, I was asked to join the board. One of the two initiatives that I led after joining the society was to record video interviews of iconic members of the epi community—such as hybridizers George French, Phyllis Flechsig, Richard Chadwick, Jean Grey and Michele Davis from Grey Davis Epiphyllum Nursery, Sandra and Roger Chapin, and Ed and Mary Beardsley. “*In their Own Words*”—as I coined it—for posterity to hear for generations to come.

My other contribution was the creation of “The Founder's Award” to celebrate the ESA's 65th Anniversary in 2005. To honor and recognize individuals including hybridizers, nurseries, and plant societies, worldwide. Previous honorees were Rainbow Gardens, Galen Pittman, Don Patterson, EPIG, George French, and Wressey Cocke. For 2023, the recipient of the award is ESA member Eddie Huey.

So, are you currently active in other epi societies? Other plant or garden societies or groups? I belong to the Epiphyllum Society of America, the San Diego Epiphyllum Society, South Bay Epiphyllum Society and the San Francisco Epiphyllum Society. I also belong to the San Gabriel Cactus and Succulent Society. I am active in several online Facebook groups which include: EPRIC, Mike's Epi Center, LA Dragonfruit Growers, LA Adeniums, LA plumerias, and the LA Hibiscus group. I enjoy interacting with group members, asking and replying to questions from fellow members.

So back to epies—you are quite an accomplished hybridizer with a long list of highly sought after hybrids. What advice would you give to others looking to dabble in hybridizing their own epies? By the way, when I asked this question of another hybridizer the advice was to have started ten years earlier! Well I can't really argue with that—hybridizing is quite the time consuming process. I've always encouraged people to start hybridizing. If I can do it, so can you. You're never too old to start. No excuses. Someday your precious collection will belong to somebody else, but your hybrids will always be attached to your name. Nevertheless, before you start, do some research on plant and flower heritage and genetics so you'll have an idea of what the outcome of your crosses might be. *Continued*

SDES Monthly Member Highlight—Jim Nones (Continued)



Jim Nones CSSA Show 2015.

Photos: Courtesy of Jim Nones.

Start with Austrian Friar Gregor Mendel, who experimented with sweet peas in the mid 1800s. Follow up with reading the *Epiphyllum Handbook* by Scott Hazelton written in 1946 (preowned versions can usually be found on Amazon or [Ebay here](#)). It's the best book ever written on epies, and a detailed account on hybridizing. It is well worth the money you'll be spending on it. After harvesting the fruit around September, I immediately sow the seeds using plastic containers and then place them in a sunny window sills inside my home. Temperature is constant and doesn't fluctuate between day and night. You would get a six month advantage instead of waiting for spring the following year.

Do you have a specific objective in mind when choosing parentage? Obviously, you want to select hearty growers when possible. 'German Empress' is ideal, tried and true. Ideally, I aim for smaller hybrids in pastel colors for more diversity—as I feel there is a shortage of them. Rudolph Hessing's hybrids provide a one of a kind uniqueness and off-season bloomers are a plus. Bigger is not always better. **Agreed.**

'Aleksander Ernest Estrada' is one of my favorite off-season bloomers and 'Sea Horses' is always one of my first to bloom with an abundance of beautiful delicate pink flowers.

Jim, tell us about the naming conventions you use when selecting names for your hybrids and do you have any favorites? My family, my friends, and my Catholic faith are my inspiration for naming my hybrids. Among them, 'The Messiah', 'The Nativity' (shown below), 'Christ Passion', 'Sister Adela', 'All Souls', 'Saint Joseph', and 'Ken Hanke'. As far as favorites—I enjoy them all—especially the ones that happen to be blooming that day!

Is there a fun fact or something interesting about you that you would like to share? A surprising or unexpected talent? Since I was a young man aside from the arts—I also became interested in photography. These days my photos are pretty much limited to my epies and I will—from time to time enter my photos in epi photo contests. **Yes Jim, this past year you swept a whole category! Congrats on that and what great work!**

Any last thoughts or anything we've missed? Pop culture icon and artist Andy Warhol was credited with saying, "Everyone will become famous for 15 minutes". I didn't really take it to heart—but his saying stayed with me.

We would like to thank Jim for taking the time to share his interesting story and thank him for providing our readers with your story and a window into your life. Jim will be attending EpiCon XVII in San Diego next May, so please be sure to say hello and introduce yourselves to him at that time.



Above Left: 'Holy Family'. Center: 'Brother Gabriel'. Right: 'The Nativity'. All Photos: Jim Nones.

San Diego Epiphyllum Society presents

EpiCon XVII

Saturday, May 25th
8:30 a.m. to 5 p.m.

\$65.00

California Center for the Arts
340 North Escondido Blvd.
Escondido, CA 92025

Speakers – Silent Auction – Raffle Table – Lunch

Register and pay using Visa or Mastercard on our secure store at the SDES website at <https://sdepis.org/>.

Or you can register by mail:

Name: _____

Address: _____ Zip: _____

Email: _____ Phone #: _____

I am also registering for the following people:

Number of reservations at \$65.00 each _____ Total Enclosed _____

Deadline for Registrations: May 11, 2024

Make checks payable to SDES and send this form and check to:
Mildred Mikas, 3502 Avenida Amorosa, Escondido, CA 92029.

Be Sure to Mark Your Calendars for These Events

As the new year begins, the Society has some amazing events planned for the Spring.

Be sure to mark your calendars for our upcoming Mother's Day Show to be held on Sunday May 12, and our early bird plant and cutting Sale to begin on Saturday May 11, 2023 at Balboa Park. This year's theme 'Rainforest Gifts' promises to be a winner. encapsulating all of the beauty and splendor found in nature.

And finally, the long-awaited EpiCon event will be reimagined as we prepare to launch EPICON XVII. The event will be hosted by the San Diego Epiphyllum Society in Escondido. After a six year hiatus it's coming back—and will be better than ever. It's an event you surely won't want to miss. Register [here](#) or use the form found on page 9 of Epi News.



Artwork and Photo: JK Hendershot

Vote to Change SDES By-Laws at February Meeting

SDES Members, As economies change, also do membership patterns and levels of member attendance. Our sales events are still robust and our organization is financially excellent, but our membership trend is decreasing. We have fewer members doing the same amount of work of that of a larger group. With that in mind, we propose to adjust the executive board of the San Diego Epiphyllum Society, and its by-laws to account for that change. We would be reducing our board members from 13 to 11. See the following page for more info and please be ready to vote at the February meeting. In addition, we are making a change to the Standing Rules, Section 20, item b. regarding the Roger Chapin Award below.

20. Society Awards (All Awards Optional Each Year)

b. Roger Chapin Memorial Award – (Volunteer Award)

Background: This award was established in 2009 in memory of Roger Chapin. Roger was an SDES member for 13 years. During that time, he served as both the President (2001 & 2002) and as a Director, both before and after being president. Roger volunteered for many years at the Safari Park and served as the curator and coordinator of the epi collection for 8 years. He taught the pre-meeting workshop for several years. Roger loved epies and SDES. He shared his knowledge by talking to the public at all the shows, sales, and events put on by the Society. Roger was an Honorary Life Member of SDES.

Criteria: This award is for a volunteer with at least ten (10) years of dedicated service to SDES. This Award is optional each year. This award may be given annually at the December awards banquet. Any member may nominate someone for the award. The recipient will be chosen from the nominees by the SDES Board and members of the Chapin Family, if any are members of SDES. This award was donated by Sandra Chapin in Roger's name.

Vote to Change SDES By-Laws at February Meeting Continued

SAN DIEGO EPIPHYLLUM SOCIETY, INC. BY-LAWS

Article V Officers

- A. The elected officers of the Society shall be President, First Vice-President, Second Vice- President, Recording Secretary, Membership Secretary, Treasurer and **four (4)** Directors.
- B. One year's membership shall be required before a member shall be eligible to be an elected officer.
- C. The retiring president shall become an ex-officio member of the Executive Board for one year, unless elected to another office.
- D. Any officer missing three consecutive Board meetings, without approval of the Executive Board, will be automatically removed from office and a replacement named as in "E" below.
- E. Should any office become vacant for cause during the term of office, the vacancy shall be filled by majority vote of the Executive Board.
- F. Any officer may be removed from office for due cause by two-thirds vote of the Executive Board.
- G. All officers, except Directors, shall serve a term of one year, or may continue in office until their successor(s) are elected. The president, first and second vice presidents and Treasurer cannot hold two offices simultaneously. Other Officers may hold two offices simultaneously if no other eligible member volunteers by a deadline of **April 1**.
- H. The **four (4)** Directors shall serve for two years or may continue in office until the election of their successor. The term of office shall be staggered with **two (2)** Directors elected in odd years. Any member having served two consecutive terms as a Director shall be eligible for re-election to that position after the interval of one year. Directors **MUST** rotate monthly to fill vacant Board positions until the position is filled.
- I. Every officer shall be accountable to the Executive Board for his/her actions on behalf of the Society.
- J. Any elected officer wishing to resign may do so in writing addressed to a member of the Executive Board. Any officer and/or appointed coordinator shall relinquish all property, records, Every officer shall be accountable to the Executive Board for his/her actions on behalf of the Society.
- K. Any officer and/or appointed coordinator shall relinquish all property, records, books, papers, tapes, pictures, etc. to their successor or to the President immediately upon vacating the office whether due to resignation or expiration of term.

Article VI Officers' Duties

Section 5. Corresponding Secretary

(duties to be combined with Recording Secretary)

Section 8. Directors

Directors will rotate monthly to fill vacant Board positions that are required for meetings. Monthly rotation to take place until the vacant Board position(s) is/are filled.

Article XI Meetings

- A. The Society shall hold a monthly general meeting. The meeting may be held in-person or electronically, as needed. A quorum shall be the lesser of three times the current number of officers and directors or ~~36~~30 members.
- B. The Society's Executive Board shall hold a monthly meeting. The meeting may be held in-person or electronically, as needed. A quorum shall be six (6) members.
- C. The general meeting in December will be the holiday banquet and shall include the installation of new Officers and Directors. If the members are unable to assemble in-person for the holiday banquet, the installation of Officers and Directors will be performed at the December Executive Board meeting.
- D. Special meetings may be called by the President, by **six (6)** members of the Executive Board or by **thirty (30)** members of the general membership. Such meetings must be communicated to every member of the Board by electronic communication or written notice by the Recording Secretary.
- E. The purpose of the specially called meeting shall be stated and only that stated business may be conducted at such a meeting.

EpiCon History and Those Early EpiCon Events

Culled from the San Diego Epiphyllum Society and the Epiphyllum Society of America Archives



Editor's Note: As we prepare for EpiCon XVII, which will be held at the California Center for the Arts in Escondido CA, on Saturday, May 25, 2024, we thought it would be beneficial to lay the groundwork for next year's event by providing recaps of previous events in Epi News. Each month we will take a closer look at two events—beginning with EpiCon I and EpiCon II in our August issue. This month in our January issue we look at EpiCon XI and Epi Con XII. Each month thereafter, we will continue by featuring two additional events leading up to our kickoff in May 2024. Sit back and take a look at how it all began in 1987.

EPICON XI

EpiCon XI was held on May 16, 2008, at Ayers Hall in the Los Angeles County Arboretum and Botanical Garden. The day-long event kicked off at 8:30 a.m. with a continental breakfast and concluded with a raffle at 4 p.m. The ESA was this year's host.

After coffee, fruit, Danish and rolls, EpiCon XI started with a welcome, program overview and a status report for the ESA, all given by ESA President Galen Pittman, who also acted as the Master of Ceremonies. This was followed by brief status and activity report from each of the other three California epi societies by their presidents. There were two more presentations in this portion of the event; the first was from Ed Beardsley, of the ESA, discussing the Pentico Memorial Epi Collection at the Arboretum, which was scheduled to be toured later that day. The second was by Eddie Huey, the webmaster for the website, who hosted an "Epi Forum".

Next, Dr. R.W. Kohlschreiber, ESA Directory Registration Chairman, gave a presentation on recent registrations. Some of the newly registered photos shown were taken less than a week ago, and included such names as: 'Surrender Dorothy', and 'It's Magic', (shown above left) which was the theme of the EpiCon and the ESA's Flower Show the following day. After that, Paul Richter of the ESA gave four verbal and video roadmaps of the ESA website.

The final presentation before lunch was "A Tribute to Hybridizer George French". It was a video presentation of 135 slides of George French's 373 total registered originations. Each of the slides presented was preceded by a chart with the cultivar name, registration year, size and parentage for that flower. George had just celebrated his 93rd Birthday. His first registration in 1976, was 'Jennifer Ann', named for his granddaughter.

Following lunch, at 2 p.m. was a tram tour of the Arboretum, which terminated near the Pentico Collection. A short walk was then required to return to the hall. Unfortunately, one of the LA Basin's spring heat waves was in full swing, and the outside temperature was 103°F. Those that took the tour really looked "cooked" when they returned to the air conditioned hall.

The final activity of EpiCon was the close of the Silent Auction. The auction included 42 items—of which 40 received bids and were sold—most were raw and rooted cutting of originations from active hybridizers: Evelyn Shiraki, Galen Pittman, Darryl Miyamoto, and Don Burnett. The highest bid was \$75—for a large, full-grown plant of Evelyn Shiraki's named 'Evanston'. EpiCon XII will be held in May 2010, and will be hosted by the South Bay Epiphyllum Society in Palos Verdes, CA.

EPICON XII

EpiCon XII was held on May 29, 2010 at the South Coast Botanic Garden, in Palos Verdes, CA., and was hosted by the South Bay Epiphyllum Society. It was attended by more than 80 people including special guests, Laurel Woodley, President of CSSA, and Myron Kinnach, *Continued on the next page*

EpiCon History and Those Early EpiCon Events (Continued)



'EpiCon XII' (RUD)

Photo: SDES Archives

Superintendent Emeritus of the Huntington Botanical Gardens. Reports from the presidents of the four societies start off every EpiCon. Bringing us up-to-date were Loretta Garcia, Epiphyllum Society of America; Mike Davis San Francisco Epiphyllum Society; Tony Yanko, South Bay Epiphyllum Society and Sandra Chapin, San Diego Epiphyllum Society. Dr. Rudy Dorsch reported for the German Society EPIG. All groups seemed to be doing well and flourishing.

The morning presentation began with "The Kiwi Hybrids". Yvonne and Andrew Brunton have been hybridizing epies for 30 years. Their first hybrids were from the US, but when New Zealand tightened the plant import regulations, they started hybridizing. At first it was a private collection, but as it grew very large they went commercial as Craigmyle Epiphyllums in 1995. The nursery now has about 6,000 epies in a large facility that Andrew Brunton built. The location gets 80 inches of rain per year, which the Bruntons collect and use to water the epies. The Bruntons' hybridization emphasis is on small, yellow epies. All hybrids are preceded by the identifying word 'Kiwi'.

The second presentation was "New Small Hybrids from Germany". Rudolf Hessing has been working in his 10 meter (32.81 feet) square green house to produce new small epies. Mr. Hessing is one of the few hybridizers working to produce new small epi hybrids that bloom in multiple seasons. He works with small conventional hybrids, and/aporo or angular epicactus. He is after quality in his originations, and is ruthless about throwing away hybrids that don't meet his criteria. Mr. Hessing showed pictures of blooms from his hybrids and some of his originations were included in the Silent Auction.

The next presentation was a "Review of Knebel Hybrids and New Epi Hybrids of Helmut Paetzold". Dr. Rudy Dorsch, in conjunction with Rainbow Gardens have produced a book "The History of Early German Hybridizer Curt Knebel". A copy was given to each household attending the event.

Chuck Everson of Rainbow Gardens presented slides on "California Hybridizers of the 20th Century" including originations of: Wressey Cocke (635 epi hybrid registrations), Phyllis Flechsig (21), George French (349), Fort & O'Barr (FOB 1,067) and Don Patterson (128). Many of the slides were familiar to most collectors—but some are now rarely seen—and especially the FOB hybrids, some of which are now extinct. The popular 'Clown' originated by Phyllis Flechsig, is shown below right as an example.

One of the final presentation entitled "The Year of the Pitahaya", by Edger Valdivia gave an informative introduction to the rare fruit the "Pitahaya", which is also known as "Dragon Fruit". Mr. Valdivia has spent his time since retirement in developing new varieties of Pitahaya. And finally, a preview of "New Southern California Hybrids" was presented by Don Burnett, Darryl Miyamoto, Galen Pittman and Evelyn Shiraki with slides of some of their most recent registrations. A Silent Auction closed the event, offering many of the coveted Kiwi Hybrids. We look forward to seeing everyone in May 2012.



Left: Yvonne and Andrew Brunton, presenters and hybridizers of the "Kiwi" hybrids.

Right: 'Clown' by Phyllis Flechsig was a popular bloom at EpiCon XII.

Photos: SDES Archives



SDES Annual Holiday Banquet Held in December

The San Diego Epiphyllum Society once again held its annual Holiday Banquet and Installation of Officers at the Butcher Shop Steakhouse in San Diego on December 13, 2023.

Over 50 members and guests were in attendance, and were greeted by Patricia Neal and Gerry Mikas, who checked in members and provided each with a raffle ticket and directed those who brought a gift for the gift exchange to the gift exchange table. The room was beautifully decorated for the holiday season, and while members were settling in to their tables, pictures were taken of all of those in attendance, and are provided on the following two pages for your enjoyment.

To set the Holiday mood for the event, members and their guests were treated to the beautiful sound of a four-piece string quartet which provided a musical backdrop for the evening, as well as some featured pieces they performed. The members of the quartet currently attend Rancho Bernardo High School, and recently had the opportunity to play at the acclaimed Radio City Music Hall, in New York City last May.

The members of the group are as follows: Ethan Hochberg - 1st violin, Joel Ryen - 2nd violin, Elliot Mikas - viola, and Aria Hajali - cello (below left). Elliot's brother Xavier was also in attendance, and assisted our Master of Ceremonies. Both young men are members of SDES. Elliott and Xavier are the sons of Keith and Heayoung Mikas; and the grandsons of Gerry and Mildred Mikas.

While the quartet took a brief intermission, Mildred Mikas our Master of Ceremonies recognized all first time attendees and allowed them the opportunity to introduce themselves and tell the others about their collections and love of epies. The business portion of the meeting was also held and the society's budget was approved and new officers were recognized (see photo below right).

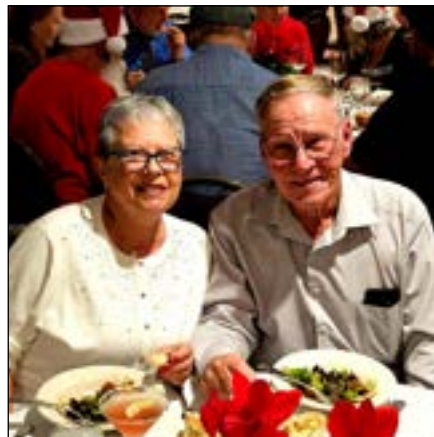
After the business concluded, the wait staff began serving our meal. The dinner was amazing—as is the Butcher Shop tradition—with a selection of entrees for the main course and delicious cheesecake topped with caramel drizzle for dessert. Everyone had a chance to visit, and catch up with friends while enjoying their dinner set to the quartet's musical selections. Centerpieces were also given to a guest at each table.

After dinner, a raffle was held with various prizes which included some coveted epi cuttings, garden supplies and Walter Andersen's gift certificates. Most everyone in attendance went home a winner. Following the raffle, those who brought gifts for the gift exchange participated and took home many of the treasures that were beautifully wrapped and decorated for the exchange.

Following the gift exchange, David Cheever, recognized Marie Dempewolf, who was named recipient of the Roger Chapin Award for 2023, and Jerry Moreau who received a certificate of honor recognizing his many years of service at the Safari Park. Another successful SDES event to ring in the holidays, and thanks to all who participated and organized the event.



SDES Annual Holiday Banquet Held in December (Continued)



Photos: JK Hendershot

SDES Annual Holiday Banquet Held in December (Continued)



Photos: JK Hendershot

Society Officers, Directors and Coordinators for 2024

President	David Cheever President@sdepis.org	Garden Caravan	Mildred Mikas GardenCaravan@sdepis.org
1st Vice President	OPEN	Holiday Banquet	Mildred Mikas Banquet@sdepis.org
Programs	Programs@sdepis.org	Internet/Webmaster	Gilbert Hatfield Webmaster@sdepis.org
2nd Vice President	Pat Neal & Sandra Chapin MothersDay@sdepis.org	Workshops	OPEN Workshops@sdepis.org
Mother's Day Show	Gerry Mikas Treasurer@sdepis.org	Safari Park	Beth Jackson & Ron Crain SafariPark@sdepis.org
Treasurer	Carmela Griswold Recording@sdepis.org	CSSA Affiliate Rep	Jerry Moreau CSSA@sdepis.org
Recording Secretary	Sal Castellitto Corresponding@sdepis.org	EpiNews Editor	JK Hendershot EpiNews@sdepis.org
Corresponding Secretary	Beth Jackson Membership@sdepis.org	Research & Education	Linda Sinkovic Research@sdepis.org
Membership Secretary	Paula Reynolds Directors@sdepis.org	SDBGF Rep	Pat Neal SDBGF@sdepis.org
Director 2023-24	Mildred Mikas Directors@sdepis.org	Librarian	Marie Dempewolf Librarian@sdepis.org
Director 2023-24	Linda Bennett Directors@sdepis.org	Historian	Pat Neal Historian@sdepis.org
Director 2023-24	Gilbert Hatfield Directors@sdepis.org	Raffle Table	Paula Reynolds & Dennis Hughes Raffles@sdepis.org
Director 2024-25	Oliver LaPuebla Directors@sdepis.org	Hospitality	Barb Alvarez Hospitality@sdepis.org
Director 2024-25	PastPresident@sdepis.org	Name Tags	Gerry Mikas Store@sdepis.org
Immediate Past Pres.	Cindy Decker & Dean Delibertis Salestable@sdepis.org	Refreshments	OPEN Refreshments@sdepis.org
Sales Table & Events	SalesEvents@sdepis.org	Social Media Publicity	Eddie Huey OPEN Publicity@sdepis.org

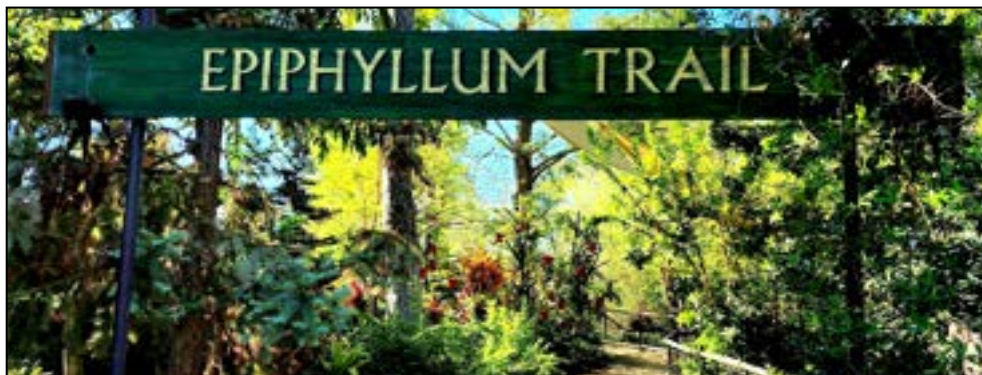
SDES Annual Holiday Banquet Held in December (Continued)



Photos: JK Hendershot

Safari Park Epi Collection and Display

The December mornings have been chilly out at the park. One morning we arrived and it was in the high 30s, and then warmed up to 79°F by the end of our shift when we were leaving. But not to worry—we have a frost protection system in both of the work houses.



The Epiphyllum Trail is set up like this as well. The irrigation comes on when the temperature gets to 28°F or below and stays on until the temperature gets back above 28°F. The trail is at a slightly higher elevation so the temperature doesn't seem to get that low there. We did lose the collection to frost back in the early days of the display house, so this system was set up to protect the epies and has since worked very well over the years.

The weather continues to be unpredictable yet again this month, with the dry Santa Ana winds creeping in periodically. Then this month we went from dry weather to wet weather again. We always can use the rain and the plants prefer it more than the dry Santa Ana winds. We also enjoyed a few of our epies that were blooming which included: 'Ramona Paetz', 'Kiwi Honey Glow', 'Lilly Paetz', 'Charming Beauty', 'Harald Knebel', and 'Felcino Favorite'.

We are all looking forward to the cooler weather the fall brings us when working out at the park. All in all, everything looks great and we are fortunate to be the caretakers of such a wonderful epiphyllum collection ([About Epiphyllum](#)).

We appreciate everyone who helps out at the park with the collection and display. The [Epiphyllum Trail](#) is such a wonderful place for all at the park to enjoy. Please know how much the society depends on everyone for all their effort and dedication. Thanks for all that you do.

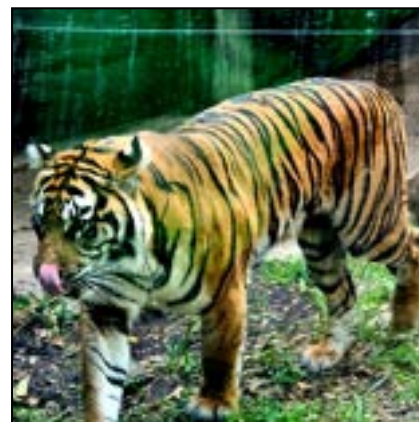
Volunteering at the Safari Park this past month were: Barb Alvarez, Keith and Linda Bennett, Sandra Chapin, David Cheever, Ron and Velma Crain, Oliver Lapuebla, Cindy Decker, Marie Dempewolf, Dean DeLibertis, Jeff Hendershot, Beth Jackson, Paula Reynolds, Tim Paule, Janice Wakefield, Ellen McCollum, Mildred Mikas, Dennis Hughes, Betsy and Jerry Markle.



*Left: 'Charming Beauty'
WCx056, 1983.*

Right: [Sumatran Tiger mom Diana](#) is active with her two cubs (b. July 12, 2023), adjacent to the Epiphyllum Trail prior to the park opening on the morning of December 16, 2023.

Photos: JK Hendershot



Details on How to Become a Volunteer at the Safari Park can be found on our website. If you have any questions contact Beth Jackson. Click on <https://sdepis.org/welcome-to-sdes/epiphyllums/volunteering/>



Wish List and Monthly Refreshment Schedule

If there are epies that you are looking for it is possible someone in the society might have it and be willing to share a cutting or two with you.

As a service and benefit to our members this list is being included in the newsletter. Send your wish list along with your contact information to the editor to have it included here.

Sal Castelltito: aclarasd@aol.com

'Bold Venture', 'Buttercup', 'Christmas Elf', 'Christmas Kiss', 'Kiwi Honey Gold', 'Merry Christmas', 'Spanish Gold'

Forrest Ehbrecht:

forrestkehbrecht@yahoo.com

'London Desire', 'Forrest Fyre' (MW)

Casey Gerdes: casey@yogawithcasey.com

'Crystal Flash', 'Gladyce Jones', 'Glow Bug', 'Kiwi Contradiction', 'Monastery Gardens', 'Ron Crain'

Carmela Griswold:

calcolors@gmail.com 'Clarity's Happy Hippie',

'Kiwi Sweetheart', 'Bernhard Paetz', Kiwi Razzle Dazzle'

Bridget Kleindienst:

Bkleindienst13@gmail.com

'Baby Cake', 'Crystal Claret', 'Heather'

Andrea McArthur:

acmcarthur@roadrunner.com

'Queen Tatiana'

Michal McKee: folklorist@gmail.com

'Elegans Lei', 'Mojave Gold'

Priscilla Merriam: pafmerriam@gmail.com

'Frida Kahlo', 'Gold Coin', 'Oberon',

'Ron Crain'

Leonora Rodriguez: 'Lenore Overture',

'Kinneloa', 'Spanish Flare'

Paula Reynolds:

paularey@aol.com

'Sunset Cliffs', 'Voltaire'

Janice Wakefield:

jwakefield.home@gmail.com

'Bobby Brynildsen', 'Jasa', 'White Cloud'



Off-Season Blooms

This list is comprised of informal research on off-season epi blooms. Here you can track which epies have been blooming consistently off-season over the years. If you would like to add to the research and list what epies have been blooming in your garden, email the editor with your list of blooms. Here's what's been blooming this past month:

Barb Alvarez (Lemon Grove): 'Borgia'

Cindy Decker (La Mesa): 'Kirsten Pellemounter' 'Coral Dance'

Dean Delibertis (Chula Vista): 'Full Moon Beauty', 'Pajama Drama'

Forrest Ehbrecht (San Diego): 'Gold Charm'

Carmela Griswold (Vista) 'Wild Ginger'

Jerry Moreau (San Diego): 'Jalisco Flirt', 'Jemo'

Safari Park (San Pasqual Valley): 'Ramona Paetz', 'Kiwi Honey Glow', 'Felcino Favorite'

'Lilly Paetz', 'Charming Beauty', 'Harald Knebel',

Paula Reynolds (Point Loma): 'Jalisco Queen', 'Christmas Elf', 'Cythnia', 'Herbert S. Irwin'

Off-Season Blooms (continued)

Patricia Neal (San Diego) 'Frühlingstraum'

Linda Sinkovic (Santa Cruz): 'Jalisco Flirt'

Species Blooming

Here is a list of species blooming this month:

Carmela Griswold (Vista) *Rhipsalis* ssp.

pilocarpa.

Barb Alvarez (Lemon Grove): *Lepismium cruciforme*

Dean Delibertis (Chula Vista): *Epiphyllum oxypetalum*

Linda Sinkovic (Santa Cruz): *D. macranthus*

Jerry Moreau (San Diego): *D. anguliger*

Noller/Uruapan

Safari Park (San Pasqual Valley): *Epiphyllum hookeri* ssp. *hookeri*, *Disocactus anguliger*, *Epiphyllum hookeri* ssp. *guatemalense*

Paula Reynolds (Point Loma): *Selenicereus anthonyanus*, *E. thomasianum*, *E. oxypetalum*, *Rhipsalis* ssp. *pilocarpa*.

Epi News Submissions

News of interest to our SDES membership, and brief articles about our members, or our community are also welcome.

- Send any articles, photos, and questions.
- Send submissions as a Word or Google document. Items can also be sent as text pasted into an email body. No PDFs.
- Please limit formatting. Avoid excessive bolding or tabs. Avoid words in all CAPS. Please proofread and spellcheck, esp. names.
- Send photos as JPEGs attached in an email to submit to the editor.
- All photos need caption and photographer's name. Photos need photographer's permission.
- Use of photos is at the editor's discretion.
- Send videos as MP4 or as a YouTube link. Videos must have videographer's permission.
- Materials and submissions need contributor's name.
- All submissions are at the editor's discretion.
- Submissions are due by the 15th of the month for inclusion in the following month's *Epi News*.
- If you are not sure—send it anyway. Email the editor at: EpiNews@sdepis.org

Mission Statement

SDES is a community of epi growers who encourage the study of epies and the interchange of ideas on growing, displaying, and collecting epies and its related species.

SDES Officers for 2024

President	David Cheever
1 st Vice President	Open
2 nd Vice President	Patricia Neal & Sandra Chapin
Treasurer	Gerry Mikas
Recording Secretary	Carmela Griswold
Corresponding Secretary	Sal Castellitto
Membership Secretary	Beth Jackson
Director 2024-25	Gilbert Hatfield
Director 2024-25	Oliver La Puebla
Director 2023-24	Linda Bennett
Director 2023-24	Mildred Mikas
Director 2023-24	Paula Reynolds

Resources

As a benefit to our members we have compiled a list of epi resources available to you. If you are aware of any additional resources that you feel would benefit our members and you would like to have them included, please contact the editor via email.

Epi Nurseries:

Epi Haven - <https://epihaven.com/>

Epiphyllum World - Don Cravalho
<http://stores.ebay.com/epiphyllum-world>

Epic Foundation - Frank Süplie
www.epiphyllum.online

Garden Jewels Nursery - Katie Lutz
<http://gardenjewelsnursery.com/>

Heny's Epiphyllums - Heny Brandenburg
<https://www.facebook.com/henysepiphyllums/>

Kakteen Haage - Ulrich Haage
<http://www.kakteen-haage.de/>

Pacific Epiphyllum - Chris Welcher
<http://www.pacificepiphyllum.com/>

Plant and Other Societies:

Cactus & Succulent Society of America
<https://cactusandsucculentsociety.org/>

SDES is an affiliate member and our members are welcome at their meetings and webinars. See their website for more information.

Epiphyllum Society of America
1st Tuesday of every month except in December or January at 7:30 p.m. <http://epiphyllums.org/>

San Diego Botanical Garden Society
<http://www.sdbgf.org/>

San Diego Bromeliad Society
2nd Saturday of the month at 10:00 a.m.
<http://www.sandiegobromeliadsociety.org/>

San Diego Turtle and Tortoise Society
Meets on Zoom every 2nd Friday
<https://www.sdturtle.org/>

South Bay Epiphyllum Society
2nd Tuesday of each month at 7:30 p.m.
www.facebook.com/groups/511560205668403





Mother's Day Show and Sale
Sunday, May 12, 2024

Early Bird Sale, Saturday, May 11, 2024

 Rainforest Gifts

We Leave You with This—Jim Nones Hybrids



'Gay Pride' NONES



'Marian Nones-Burgos' NONES



'Platypus' GBRAN (NONES)



'The Messiah' NONES



'Santa Clause' NONES



'Capt. Benito O. Nones' NONES



'Mother Juana' NONES



'Sister Maria' NONES