

Epi News

PUBLISHED BY THE SAN DIEGO EPIPHYLLUM SOCIETY

November 12 & December 10

1980

Volume 4 ***** Number 11 & 12

CHRISTMAS PARTY ANNOUNCEMENTS

- 1) Our fifth annual San Diego Epiphyllum Society Christmas Party will be held on Wednesday, December 10, 1980 at 6:28 p. m. at the Atlantis Restaurant at 2595 Ingraham St. (west of Sea World) on Mission Bay.
- 2) The cost to members (nonrefundable) is \$2. 00. (A San Diego Epiphyllum Society membership is defined as a husband and/or wife. Members should make sure their dues are paid through this year.) The cost to guests is \$10.00. Reservations must be in (for both members and guests) by December 1, 1980. (Call 583-9551 or mail to 6356 Delbarton St., San Diego, Ca. 92120.)
- 3) If there is a transportation problem or if members can provide rides, call George Plaisted (same phone as above).

---George Plaisted

LOIS BURKS IN NOVEMBER

Lois Burks, of California Epi Center, will give the program November 12. We all so enjoyed visiting her last May 18. She also had her first exhibit at our Mother's Day Show this year. Now she will visiting us.

---Frank Granatowski

NEW OFFICERS, DIRECTORS, & COMMITTEE CHAIRMEN

Gene Lund	President
Frank Granatowski	First Vice President
John Clancy	Second Vice President
Peggy Minarty	Recording Secretary
Milt Turner	Corresponding Secretary
Jack Bradley	Treasurer

Cecile Bradley	Director
Gladys Harper	Director
Don Irwin	Director
Roland Johnston	Director
Bill Nelson	Director
Jean O'Connor	Director
George Plaisted	Director
George Watson	Director

Duly installed October 8, 1980 by Betty Cooper

Dr. J. W. Troxell	Honorary Director
George French	Honorary Director
Charles Saltzer	Librarian
Blendina Boyle	Historian
Patricia Stebbins	Editor
Dorothy Breining	Mother's Day Show
George Plaisted	Christmas Party and Tours

Penny Bunker
Earl & Mildred Leason
Rose Miyaji
Dick Chadwick
Suzuko Ellis & Hisae Hook
Paul Runde
Howard Jones
Frank Granatowski
Gwendolyn Johnston

Gene Schmedding

Refreshments
Hospitality
Publicity
Cutting Table
Mailing
Photography
San Diego Wild Animal Park Flower Show
Sea World Flower Show
San Diego Botanical Garden Foundation,
Inc. & San Diego Floral Association
Epiphyllum Society of America Bulletin

---Gene Schmedding

COVER FLOWER

Seen on the cover of the 7/80 issue of Natural History - an illuminated Hylocereus!

---Rick Latimer

NOVEMBER REFRESHMENTS

What a lot of yummys we had at the October 8 meeting!...even kitty faces, pumpkins, ghosts, and even a cheese cake. Thanks to you all. Those who have signed up for November are:

Helen Barkdale
Mildred Barton
Bev Carlin
Sandy James
Mildred Leason
Peg Minardi
Louise Newman
Rita Ruble
Agnes Ryan
Toini Wainwright

---Penny Bunker

PAT STEBBINS - NEW EDITOR

Pat Stebbins will be our new Epi-News Editor starting with our January 14, 1981 issue (Volume V). I wish her much success and a lot of cooperation from the SDES members. I offer any assistance that may be needed. I expect the whole society to give her their support and to submit many news items and/or articles. WELCOME PAT!

---Rick Latimer, Past Editor

FULL COLOR EPI CATALOGUE

***THE BEST IS HERE! That's right -- our 1981 catalogue is out and it's such a knockout: full color, over 75 magnificent photos of such beauties as: "Acapulco Sunset", "High Fashion", "Monastery Garden", "Zorina", "Joseph Marshall", "Mondora Bell", "Royal Toast", and much more -- PLUS we've increased our selection of Rhipsalis, Hovas, and Aporophyllums, to boot!

For \$1.00 you can get this catalogue (deductible on first order), 8 multiple discount coupons, winter bonus special, plus we will throw in FREE our 1980 Bookshop Catalogue with over 208 great indoor/outdoor plant books. This has got to be the best bargain in town!

RAINBOW GARDENS
Box 721-SD
La Habra, Ca. 90631

Added Note: We've got thousands of potted plants available for purchase, and books, of course. Come in and see us! Call to assure that we are open: (213) 697-1488). Let's make this a GREAT year for Epiphyllums and the San Diego Epiphyllum Society!

ADDITIONAL ADDED NOTE: All of our 1979 and 1980 plant customers will receive our 1981 collectors catalogue in the mail FREE OF CHARGE!

---Chuck Everson
&

Jerry Williams

11/4 11/4 12

THE PHILOSOPHY OF EPIPHYLLUM CULTURE

Below we have included quotes from our philosophers; ancient and modern, famous and obscure, and sacred and profane; and in several languages. We have lifted these quotes completely out of context and here illuminate them only under the relatively dim light of Epiphyllum culture and not under the bright light of their intended meaning. Some of these phrases have an intended figurative meaning, but we will view them figuratively; some are the other way around; and some make a broad statement, but we will take a narrow view. Some of these will make appropriate mottoes for the lath house. So, just sit back and enjoy!

- E**ureka! - Archimedes = I have found it! (Motto of California) - A suitable exclamation of an Epi grower, who has found that desired Epi at last in a nursery.
- S**arfois dans un coin triste et noir pousse une fleur. = Francois Coppée = Often in some dull, dark corner (of the lath house) blooms a flower. (Or keep your eye open for unexpected surprises!)
- C**h kenn' ein Bluemlein wunderschoen... - Goethe = I know a flower of beauty rare...(Might not this have been said often by Curt Knebel?)
- L**alingenius - Li's est de nomine, non re. = We're fighting merely about names, not things. (Don't we all feel this way at least once?)
- H**obbyist's Motto? - Vauvenargues - Ceux qui se noquent des penchants sérieux aiment sérieusement les bagatelles. = People who sneer at those who give importance to their hobbies, are wont themselves to give importance to mere trifles.
- A**arker - The end crowns the work. (Growing an Epi from a cutting or a seed, and then finally being rewarded with a flower...)
- A** planta muchas traspuesta ni crece, ni medra. = The plant often transplanted, neither grows nor thrives. (Let Epis be potbound, but when transplanting take care not to disturb the roots.)
- U**ther - Gute Jage koennen wir nicht ertragen. = It is prosperity that we cannot endure. (Spray the stems of your Epis as often as you want, but loving them to death by overwatering the roots is just that.)
- U**t sementem feceris, ita metes. - Cicero = You reap just what you sow. (Unless you get the seeds mixed up!)
- M**atthew (13,6) - Because they had no roots, they withered away. (When the Epi roots go, the plant can not survive well, or or ark (4,6) if rot sets in, the plant can not survive for long.)
- S**ong-of Solomon (2,15) - ...the little foxes that spoil the vines...(Any pest to our Epi 'vines': mealy bug, aphids, fungus, snails, etc.)

REFERENCES:

- Lilian Dalbiac, Dictionary of Quotations (German, French).
Thomas Benfield Harbottle, Dictionary of Quotations (Classical).
Hugh Percy Jones, Dictionary of Foreign Phrases and Classical Quotations.
Burton Stevenson, The Home Book of Bible Quotations.
- 1/24/42



THE GOLDEN AGE OF EPIPHYLLUMS

Part VII: The San Diego Epiphyllum Society

by Ruth Nelson

PROLOGUE: PROCLAMATION

WHEREAS, Epiphyllum refers to leaf like branches on which flowers grow, and the Epiphyllum plant is a spineless, upright branched, flat-stemmed cacti with very large and showy flowers which are mostly night blooming; and

WHEREAS, there has been formed a local organization known as the San Diego Epiphyllum Society and its members have been instrumental in introducing and registering new varieties of Epiphyllum; and

WHEREAS, THE San Diego Epiphyllum Society will furnish and participate in the planting of Epiphyllum at the County Administration Center, under supervision of the Garden Supervisor, and at other public places; and

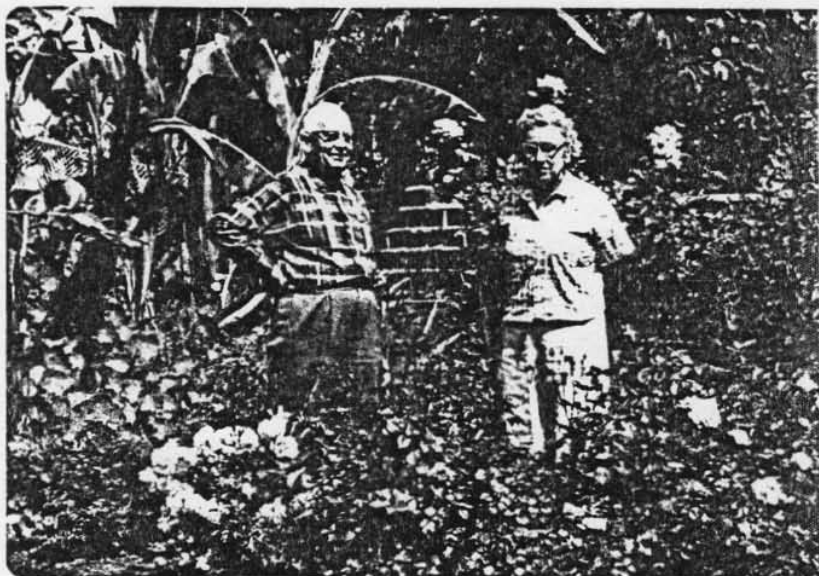
WHEREAS, the local Epiphyllum Society will stage shows for the promotion of Epiphyllum in the County and will join with the San Diego 200th Anniversary, Inc., in the presentation of an Epiphyllum show in the Arcadia Arboretum in June, 1969; NOW THEREFORE

BE IT RESOLVED that the Board of Supervisors of the County of San Diego does hereby proclaim the month of May, 1969, as EPIPHYLLUM MONTH in San Diego County, and urges its citizens to give recognition to the beauty and merits of the Epiphyllum and to the San Diego Epiphyllum Society for its public spirited contributions to the community.

PASSED AND ADOPTED by the Board of Supervisors of the County of San Diego, State of California, this fifth of May, 1969.

Jack Walsh (1st District)
Henry Boney (2nd District)
Harry Scheidle (3rd District)
De Graff Austin (4th District)
Robert Clozens (5th District)

It was known that Dr. Troxell had wished for a number of years to have an Epi society organized in San Diego (see the Nov.-Dec. 1979 issue of EpiNews). As an active hybridizer and grower and long time member of the ESA, he found it increasingly more diffi-



cult to make the long trip to Los Angeles. It was also known that there were a number of people in the San Diego area (especially in Pacific Beach) who were interested in Epis. So one day in May of 1970, while visiting the Doctor's garden, Bill Nelson said, "Doctor, do you still want an Epiphyllum society here?" The Doctor said, "Yes!" very enthusiastically. So Bill said, "Let's see what we can do." The Doctor replied, "You go ahead and I will back you all the way." That did it. We started passing the word that we were going to organize an Epi society in San Diego. (For example, we placed a notice in the June issue of the San Diego Cactus and Succulent Society's Espinaz y Flores.) The news went from one person to another, and by July we set a date and place for a meeting.

On July 17th at about 7:00 p. m., we started our "society formation" meeting at the old Floral Building in Balboa Park. We expected the large meeting hall, but the Organic Garden Club was using it that evening. So we met in the San Diego Floral Association office. It was something like 16' long and 8' or so wide and already held two desks, a table, two book cases, and some shelves. That made it a bit crowded for 23 people! However, it was the most amiable group that you ever saw. About half of them sat out on the porch, and the rest were practically sitting on each other's laps. Everything went right along smoothly: selection of Chairman, statement of purpose, decision on society name, amount of dues, time and place of meetings, what officers were needed, all that sort of thing. It was decided that "since there is so little going on with the Epis during the summer", there would be no meetings in July, August, and September. Therefore the first formal meeting was held October 21, 1970. The second Wednesday of each month had been selected, but the room was not available that month until the third Wednesday. At this July meeting, the following temporary officers were elected: William Nelson, President; David Dalglish, Secretary; and Dr. Troxell, Treasurer. Other names on record that were at this meeting were: Ruth Nelson, Miriam Troxell, Walter Scott, W. Grant Standley, Mr. & Mrs. Anthony D'Attilio, Robert Bossier, Mr. & Mrs. Walter Bunker, Glen Heyer, Owen Hamilton, Gladys Harper, Eva Clover, and Mr. & Mrs. R. A. Hartford.

At this October meeting, the first official officers were nominated and elected with Mrs. Hazel Scott acting as Recording Secretary. The following were unanimously elected to serve: President, William H. Nelson; Vice President, Richard A. Hartford; Secretary, Owen Hamilton; Treasurer, Gladys Harper; Chairman of the Board, Dr. J. W. Troxell; and Directors: Walter Scott, Veronica Popelar, and Eva Clover. Mr. Hartford gave the first slide presentation that the San Diego Epiphyllum Society ever had.

The meeting of November 23, 1970 was very special. First, the President of the ESA - Robert Grimshaw - gave a full report on the various operations of the ESA, such as publications, the registry of Epiphyllum hybrids, garden tours, the annual flower show, the annual photography contest, and 16 member Board of Directors. Second, our first out-of-town speaker - Dr. Herbert S. Irwin - showed slides of many Epiphyllums. Then Harold Billings (remember the garden of HIB?) formerly installed the new SDES officers. ESA President Grimshaw presented a gavel to SDES President Nelson.

(to be continued)

top picture: William & Ruth Nelson by Dr. Ronald Monroe
bottom picture: Dr. Jacob Walter Troxell and his wife Miriam in their garden
by Eugene Cooper

Not 11/6/70