

San Diego

Epiphyllum  
Society

Post Office Box 2852 • San Diego, California 92112

# Epi News

WELCOME NEW MEMBERS:

13 January 1982

VOLUME 6, No. 1

Daniel Broz, El Cajon  
Richard & Diane Camacho,  
San Diego  
Ernest & Bertha Lavoie,  
San Pablo  
Peter & Darlene Morris,  
San Diego

HAPPY NEW YEAR

...Pat Stebbins

Happy New Year to you all, and one full of good health and lots of participation in our Epi Society activities! We really do have an exciting year ahead of us; with the growth of membership of the past two years - that means more people involved in more activities, having more fun!

1981 was a "mixed bag" for me, some personal tragedies but also some unexpected delights. Being the editor of the Epi News for the year was one of my joys, I hope it's been as much fun for you as it has for me. I don't expect to make any drastic changes in the format we have now, which seems to please everybody, and I look forward to your continued support and contributions as in the past year.

I would like to give my personal thanks to those who made contributions to the Epi News in 1981:

Thanks to Sam Markey, Dorothy Ogdon, Dolores Moss, Helen Barkdoll, and Sanford Roberts for their interesting items...

An extra large thanks to Rick Latimer for his continued contributions of historical and technical information on epiphyllums...

Another thank you to Frank Granatowski for his invaluable "Now is the Time" series...

Thank you, thank you Penny Bunker for your monthly good words on the refreshment committee. It makes us look forward even more...

Thanks to all you chairmen for the reports on your committee activities and to everyone who called me with bits of information and news of interest to the society...

And last, my deepest gratitude goes to Gene Schmedding, for her monthly report of the general meetings and member profiles which were in addition to her lively duties as Corresponding Secretary and Reporter to the ESA on San Diego activity, and for being a limitless fund of information on members and past activities.

\*\*\*

CHRISTMAS DINNER PARTY, DEC. 9

...Pat Stebbins

What a wonderful way to wind up a year! The Epi Christmas Party was a perfect way to put the cap on an outstanding year for the Society.

The Mission Room at the Bahia was nearly full to capacity and it was a lovely sight - the French gold and blue decor, with the four huge crystal chandeliers gleaming on all those festive party clothes and smiling faces. The only thing missing was a brass band, and I think we did well enough without it!

After our delicious, well-served prime rib dinner, we were thoroughly entertained by 26 very talented and enthusiastic young peo-

ple, "The Music Machine" from Monte Vista High School in Chula Vista. Their director, Mr. Boles, led them through a half hour of very imaginative arrangements of some old holiday favorites and some new ones too (my favorite was "Tiny Snowflakes").

We were fortunate to see so many members from the north who were able to come, considering the heavy fog conditions that week. Among those who made that long trip were Mr. and Mrs. R. G. Lasater (Mr. Lasater is President of the ESA), and Wressy Cocks.

In the next part of the program President John Clancy honored some of the people in the society who were present, some of our past Presidents: Bill Nelson, George French, Don Irwin and Gene Lund. Also, those charter members who were there: Walter and Penny Bunker, Gene Schmedding, Betty Cooper, Bob and Shala McNeil, Juana Curtis, Ruth Nelson, Rick Latimer (past Presidents Bill Nelson and George French are also charter members).

Some special awards of recognition (epis from Calif. Epi Center) were given to Dorothy Breining ('81 Show Chairman), George Plaisted ('81 Bus Tour), Gladys Harper (hostess of Ex. Board Potluck and all'round heck of a nice gal), Rick Latimer (past Editor of Epi News), and Pat Stebbins (current Editor of Epi News).

Then came the raffle - a potted plant for everyone. (in addition to the potted plant table gift), two "Directory of Epiphyllum and other related Epiphytes" contributed by Rainbow Gardens, and two ceramic wind chimes contributed by Helen Leonard.

Our warmest thanks to California Epi Center, Rainbow Gardens, Bill Nelson, Dick Chadwick, and Don Irwin, for their contributions to the success of the party.

The party was ended on a warm note with the whole society joining in Christmas carols, accompanied on the piano by Florence Arnold, and directed by Kathleen Lund.

The hard work and worry of Elinor Latimer made the 1981 Epiphyllum Society Christmas Dinner Party

one we will all remember specially in the years to come. Elinor is one of those rare people with a talent for walking softly and getting a good job done. On behalf of the Epi Society, we thank you Elinor for such a memorable evening.

\*\*\*

DAVE LABORDE

Former member and Treasurer for the Epi Society, Dave LaBorde, passed away on December 23. We wish to express our sympathy to his wife Ferne, and family.

JANUARY MEETING

A good way to start off the new year...Chuck Everson of Rainbow Gardens will present a program of slides and information on heliocereus, hylocereus, rattails, epiphyllums in the Rainbow collection, some new ones and some never seen before. See you there!

\*\*\*

JANUARY REFRESHMENTS

...Penny Bunker

Happy New Year! I hope all had the greatest of holidays, and have started the New Year with exciting expectations of a special year. We have said "goodbye" to an outstanding Old Year and it is exciting looking forward to 1982. Thanks to all of you for the help each month bringing such delightful refreshments for all to enjoy. My help this month to bring goodies are:

Ramona Huftill Peg Minardi  
Barbara Jolly Rose Miyaji  
Betty Klumpp Dorothy Ogdon  
Ed Lucero Toini Wainwright  
Eugene Lund

Joan Miller  
Thank you every one.

\*\*\*

In the twilight rain  
These brilliant-hued  
Hibiscus...  
A lovely sunset

Basho

### WILD ANIMAL PARK

On December 12, a work crew showed up at the Wild Animal Park and just chopped the dickens out of the weeds around the epi lathhouses and performed some other needed maintenance chores. They were:

John Holcombe  
Ron Miller  
Greg Balvin  
Gene Lund  
Don Brubaker  
Kathy Van Arum  
Virginia & Harry Bennet  
Dorothy & Nate Ogdon

THANK YOU FOR HELPING OUT. (See how easy it is to get your name in the paper?)

\*\*\*

NOW IS THE TIME JANUARY-FEBRUARY  
...Frank Granatowski

Now is the time:

to feed mature plants with nitrogen-free or low nitrogen fertilizers, such as Bloom-Builder, Hi-Bloom, etc., to promote blooming this spring. Either liquid or time-release granules can be utilized; if liquid is used a subsequent application is advisable in another month.

to prune out unproductive and unsightly growth, thereby allowing more energy to be utilized by newer and healthier branches.

to maintain preventive pest control, by keeping plant containers free of debris and extraneous materials. Spray with insecticides only when necessary. Orthene, Malathion, and Cygon are available locally. READ AND FOLLOW DIRECTIONS CAREFULLY!

to protect from unexpected frost and strong wintry winds.

to pick ripe apples (seed pods). They can be planted immediately without undergoing drying process, however, some sort of natural or artificial light and heat is needed to encourage germination.

to take advantage of beneficial rains. If plants are potted in proper porous soil even heavy rains will have no harmful effects on them.

to bait for slugs and snails. A few granules of Slugetta has proved to be very effective and leaves little or no unsightly residue.

\*\*\*



CLASSIFIEDS

IT'S TIME TO ORDER YOUR COPY OF OUR  
1982 FLOWERING JUNGLE CACTUS  
CATALOGUE!!!

Our brand new 1982 FULL COLOR catalogue will be available at the end of November. Simply send us \$1.00 today (deductible first order) for the catalogue, and we will include our \$3.00 Early Bird Coupon which may be redeemed with any \$13.00 purchase of merchandise from the new catalogue, but which expires February 28, 1982. 1981 customers will automatically receive the 1982 catalogue free of charge. Our new catalogue is as large and colorful as ever with 108 color photos and a host of jungle cacti and shade loving succulents. Epiphyllums: Over 180 varieties of day and night bloomers in a tremendous range of flower colors and sizes. Expanded selection of yellow flowered hybrids... we now offer King's Ransom, Marge Cocke, Jennifer Ann, Frances C., George French and others. Don't forget, we are open by appointment. CALIFORNIA EPI CENTER, Dept. SD82, Box 1431, Vista, CA 92083. (714) 758-4290.

DOLLAR RAMA DAYS

Feb. 13 through Feb. 28th

Never has there been such a sale. For 10 days only, for walk-in customers only, we are selling our rooted cuttings, all of our general stock, while the supply lasts, at the unheard of rock-bottom price of only \$1.00 each. Sale includes plants regularly priced at \$2.50 to \$4.00. Many of them are large enough to bloom in the spring. Please, no dealers. HURST NURSERY, 12059 Lambert Ave., El Monte, CA 91732. If you are looking for something special, call us. (213) 444-5296

HOT OFF THE PRESSES!!

1981 Addendum to "Directory of Epiphyllums" is now available. 18 pages, 662 descriptions. Only \$3.50, +.50¢ postage (Calif. add 6% tax). Make your directory complete and up to date through 1981!

NEW 1982 plant catalog now available. More Eppies, Rhipsalis, Rattails, species Epiphyllums, Nightblooming Cacti than ever before! Only \$1.00 (deductible).

NEW nursery hours: 9:00 am - 4:00 pm, seven days a week at 1574 Dorothea Road, La Habra, Calif. Due to the distance involved, a telephone call in advance is advisable to insure we're open (213-697-1488). We've got thousands of potted plants for sale in 3" pots, and over 100 in the 8" pot size. All reasonably priced. Garden books are also available for preview upon request. Credit cards accepted. Bring your camera!!

RAINBOW GARDENS NURSERY/BOOKSHOP  
P.O. Box 721 Dept. ESA-SD  
La Habra, CA 90631

PUBLISHED BY THE SAN DIEGO  
EPIPHYLLUM SOCIETY

President: John Clancy  
(phone (714) 277-8206)

Meeting: 2nd Wednesday, 7:30 PM.  
Room 101, Casa del Prado, Balboa  
Park

EPI NEWS Editor: Pat Stebbins  
279-8026, 10404 Orozco Rd., San Diego,  
CA 92124

DEADLINE FOR NEXT ISSUE: 2/8/82 2/1

MEMBERSHIP: Jerry Plaisted  
583-9551, 6356 Delbarton St.,  
San Diego, CA 92120

MEMBERSHIP DUES FOR ONE YEAR: \$6.00  
SINGLE or MEMBER/SPOUSE U.S.A.,  
\$12.00 INTERNATIONAL (NOTE: Number  
in parentheses on mailing label  
indicates dues month. Please check  
and keep current.

GEORGE FRENCH

When you park in front of George and Madeline French's house in Point Loma, there is no feature of the neatly clipped and shrub-planted facade that would give you even a hint of the lovely garden at the rear. When you walk around the side and come out into the covered patio area, it's like walking into a tropical living room.



George French

The house sits on about 1/3 of a 167' by 50' lot, the remaining space being the patio, divided by a slight elevation and step-up at the center, and behind the patio the main growing area dominated by a giant ficus tree. Here are some of the most beautiful epiphyllum plants you will see anywhere. When I visited the French's in early December, I saw about 10 blooming (or about to bloom) epis. When I visited the French's at their open house last summer, the beauty of all those plants blooming in that lovely patio area was nearly overwhelming. In among the the epis are a generous collection of succulents and cacti and orchids, so the overall effect is really lush.

George and Madeline have two daughters: Kathy, who is in graduate school at Stanford, working on her PHD in Marine Biology, and Judy, who lives with her family in Poway. Judy is the mother of the French's three grandchildren, Jennifer Ann, Billy and Shawn (after which George has named three of his registered hybrids, JENNIFER ANN, BILLY BOY, and SHAWN).

George got started in epiphyllums with some cuttings given to him by a lady at the hospital when his youngest daughter was born, 26 years ago. Some of those cuttings were PINK LADY, PADRE, AND F. W. BEUL. But he really didn't get started collecting in earnest until the 60's after visiting Beahm's, Cactus Pete's, and Coolidge Gardens in Los Angeles, and Lessar's Nursery in Leucadia.

In 1960, some of the first hybridizing he tried was with cuttings from Dr. Troxel of all his yellow hybrids: TRIUMPHANT, REWARD, GOLDEN SUNBURST, DISCOVERY... George now has 27 registered hybrids to his credit and many more waiting for the crucial decision.

After his seedlings are several inches high, he takes the best half of them and repots in 4" pots, then weeds those at about two years, destroying all the weak growers. His potting recipe is equal parts oak leaf mold, Redwood soil prep, potting soil (Jungle Growth), to which he adds perlite and charcoal until it feels right. He is also experimenting with a composted kelp mixture added to his potting recipe. He feeds Hi-Bloom in January and Watch-Us-Gro the rest of the year, feeding once a month.

George has recently started cuttings by the grafting method on about 15 opuntias in 5 gal. containers. Some that are only 9 months old already have leaf growth 2 to 3 feet in length. (Offhand, I would say that experiment is already a roaring success!)

George is a charter member of the San Diego Epiphyllum Society. He was Show Chairman for the first

seven annual shows, and is past President of the Society in 1972 through 1974. At one time he belonged to the Cactus and Succulent Society of Los Angeles and was a member of the Orchid Society of San Diego for 10 years, but now belongs only to the SDES, devoting his gardening time to hybridizing and experiments on cutting growth. Some of his other interests are oil painting and woodworking.

On the French's patio, over a plant bedecked fireplace, is a quotation by Farnsworth, etched in a wooden plaque, which just about sums up the character and philosophy of George and Madeline:

"Beauty...is the smile on the earth's face, open to all and needs but the eyes to see, the mood to understand."

\*\*\*

REGISTERED HYBRIDS OF GEORGE FRENCH

<u>Name and Cross</u>	<u>Size &amp; Color</u>	<u>Date &amp; Regis.No.</u>
BALL'O'FIRE (Radiant Light x Fire Devil)	(M) RED	6/17/80
BILL NELSON (Pink Jeroma x Flirtation)	(L) PNK	5/25/80 9661
BILLY BOY (Scott Hazelton x garden cross)	(S) PUR-PNK	5/20/79 8579
CALISTO (Jennifer Ann x Tele)	(XL) YEL-WHT	6/15/81 9757
CHICHA (Triumphant x Yellow Delight)	(L) OR-YEL/ WHT	5/21/81 9758
DEAR HEART (Fair Lassie x Flirtation)	(L) PUR-PNK	5/20/79 8772
GALACTICA (Jennifer Ann x Tele)	(XL) YEL	6/3/80
GEORGE FRENCH (Pistachio x Golden Sunburst)	(L) YEL	5/15/78 6759
IO (Golden Sunburst x Pistachio)	(L) YEL-WHT	5/5/80 9689
JENNIFER ANN (Triumphant x Yellow Delight)	(M) YEL	5/22/77 6633
JICARO (Fair Lassie x Flirtation)	(L) OR-YEL/ WHT	5/22/71 9760
JUDITH JOY (One-In-A-Million x Chrissy)	(L) RED	7953
JU JU (Discovery x )	(L) YEL	7955
JUANA (Fair Lassie x Flirtation)	(L) PLUM	5/18/79 8573
KATHY JANE (Chrissy x One-In-A-Million)	(L) RED	5/18/79 7988
LOMA PORTAL (Pistachio x Golden Sunburst)	(L) RED-OR	4/19/78 6758
MADLINE (Pistachio x Golden Sunburst)	(L) YEL-OR	5/14/79 8574
MAGIC FIRE (Radiant Light x Fire Devil)	(L) RED	5/28/80 9688
MESA COLLEGE (Fair Lassie x Flirtation)	(L) YEL	6/14/80 9687
MIMS T. (Pink Jeroma x Discovery)	(L) WHT-YEL	5/21/79 8575
POINT LOMA (Malcho's Beauty x garden cross)	(XL) PUR	5/20/80 9661
RADIANT FIRE (Fire Devil x Radiant Light)	(M) RED	5/30/78 6763
SEBU (Fire Devil x Radiant Light)	(M) RED	5/20/79 8576
SHAWN (Crissy x One-In-A-Million)	(M) OR	5/28/80 9686
VOLTAIRE (Ghengis Kahn x garden cross)	(L) RED	5/20/79 8577

THE GOLDEN AGE OF EPIPHYLLUMS  
Part XII: Some English Hybrids  
by Rick Latimer

13 January 1982  
VOLUME 6, No. 1

The following descriptions were originally published in the British National Cactus and Succulent Journal (15:1), March 1960, p. 7-10, in an article by the author of the book Fine Flowered-Cacti F. R. McQuown. The photographs are his. The letters "H. C. C." of course refer to the Horticultural Color Chart published by the Royal Horticultural Society.

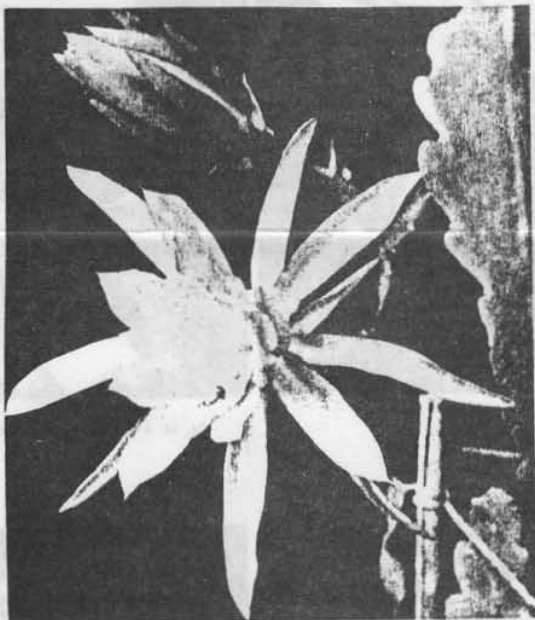


Fig. 12: LONDON MAGIC.



Fig. 13: LONDON SUPERB seedpod

"EPIPHYLLUM" DESCRIPTIONS

Main List

**LONDON BEAUTY** (Figs. 2-3). Stems 18-24" long, 1" wide, stiff and erect, mostly 3-angled, sharp notches, few or no bristles. Flowers medium, freely produced summer and autumn. Summer colour pale mandarin red (H.C.C. 17/1), extreme outer petals paling to begonia (H.C.C. 619). Autumn colour near azalea pink (H.C.C. 618). Fruits elongated, 2" long, 1" wide, 5-7 very slight ribs, short thin spines, no scales, moderately glossy, crimson (H.C.C. 22). (A.N. R21).

**LONDON CHARM** Stems 12-18", 1" wide, drooping, mostly flat but some 3-angled, shallow notches, numerous weak bristles 1-1/2" long. Flowers small, mainly produced in autumn, colours same as 'London Beauty'. Fruits rare, no specimen to describe (A.N. N15).

**LONDON DELIGHT** (Figs. 4-5). Stems 24-30" long, 1 1/2" wide, stiff and erect, 3-angled, sharp notches, bristles: parse and fine, 1/2" long.

Flowers very large. Summer colour varying from fire red (H.C.C. 15/1) to burnt orange (H.C.C. O14), outer edges of inner petals camellia rose (H.C.C. 622). Autumn colour similar to 'London Glory'. Fruits ovoid or spherical, 2-3" long, 1 1/2-2" wide, 5-7 slight ribs each with scale, no bristles, slightly glossy, oxblood red (H.C.C. 00823/1), flesh palest pink, very juicy, strong pleasant aroma, very acrid, seeds: large, (A.N. H45).

**\*LONDON GIRL** (Figs. 6-7) A.M.R.H.S. 17th June 1958. Stems 24" long, 2" wide, flat, sharply notched, few bristles 1" long, vigorous. Flowers medium, opens rather flat, centre rib of petal signal red (H.C.C. 719), rest of petal deeper shade of same hue. Fruits spherical to elongated, 1 1/2-1 3/4" long, 1/2" wide, 7-8 well-marked narrow ribs, no scales, numerous stiff bristles 1/2" long, glossy, crimson (H.C.C. 22), mild pleasant aroma and taste. Raised McQuown. (A.N. Q56).

**LONDON GLORY** (Fig. 8) Stems 24-30" long, 3" wide, flat, stiff, erect, rather thick, tending to red at margins, rounded notches, no bristles. Flowers large, produced freely in summer but seldom in autumn. Extreme outer petals currant-red (H.C.C. 821), intermediate petals orient red (H.C.C. 819), inner petals orient red (H.C.C. 819) edged fuchsia purple (H.C.C. 28). (The general effect is red with a blue sheen). Fruits the same as 'London Delight', except (a) they are not usually so big, being 1 1/2-2 1/4" long and 1 1/4-1 1/2" wide, and (b) the taste is sweet. (A.N. N34).

**\*LONDON GLOW** Stems 20-26" long, 1-1 1/2" wide, flat, drooping, sharp notches, no bristles. Flowers medium, freely produced summer and autumn, signal red (H.C.C. 19) edges of petals touched with magent. (H.C.C. 27/1). Fruits not available for description. Raised McQuown. (A.N. Q55).

**\*LONDON LADY** (Figs. 9-10) Stems 16-20" long, 2" wide, fairly stiff, erect, slightly rounded notches, few bristles 1-1 1/2" long, shoots vigorously from base. Flowers medium, freely produced mainly in summer, outer petals Jasper red (H.C.C. O18) shading to inner petals of azalea pink (H.C.C. 618/1). Fruits ovoid or elongated, 1-2" long, 1/2-1 1/2" wide, 7-9 well-marked thick ribs, no scales, moderate number of thin bristles 1/2" long, dull, crimson (H.C.C. 22). Raised McQuown. (A.N. Q54).

**LONDON MAGIC** (Figs. 12, 14). Stems 20-28" long, 2-2 1/2" wide, stiff and erect, rounded notches, no bristles (resembles a giant *Nopalxochia phyllanthoides*). Flowers medium, inner petals form cup, freely produced mainly in summer, pale neyron rose (H.C.C. 623/1), deepening with age. Fruits ovoid, 2-2 1/2" long, 1-1 1/2" wide, with marked cylindrical neck 1/2" - 1/4", no ribs, no bristles, 6-8 small scales, highly glossy, indian lake (H.C.C. 826), flesh lighter (H.C.C. 826/3), pleasant flavour, sweet. (A.N. H41).

**\*LONDON SUPERB** (Figs. 11, 13) Stems 20-28" long, 1" wide, 3 to 4-angled, stiff and erect, sharp notches, few small bristles, shoots vigorously from base. Flowers large, freely produced summer and autumn, outer petals signal red (H.C.C. 719), inner petals capicum red (H.C.C. 715) at centre rib, more intense at edges. The style protrudes through the unopened bud and the stigma expands before the petals. Fruits indistinguishable from 'London Girl'. Raised McQuown (A.N. Q57).

Subsidiary List

**LONDON BELLE** Stems 18-24" long, 1-1 1/2" wide, rather drooping, flat, rarely 3-angled, shallow notches, few bristles 1/2" long, vigorous growth. Flowers medium, light capicum red (H.C.C. 715/1). (A.N. S37).

**LONDON BOY** Stems 18-24" long, 1-1 1/2" wide, stiff and erect, flat or 3-angled, shallow notches, few bristles 1/2" long. Flower medium, vermilion (H.C.C. 18). (A.N. 550).

**LONDON JOY** Stems 18-24" long, 2-2 1/2" wide, stiff and erect, mostly 3-angled, some flat, shallow notches, numerous stiff bristles 1/2" long, vigorous growth. Flowers very large, signal red (H.C.C. 719). (A.N. N18).

**\*LONDON LAD** Stems 16-20" long, 1-2" wide, drooping, flat, shallow notches, few bristles 1/2" long, shoots freely from base but tends to make short shoots. Flowers medium, mandarin red (H.C.C. 17). (A.N. Q60). N.B. Some plants sent out under numbers Q59 and Q62 are practically indistinguishable from this variety, all raised McQuown.

**LONDON LASS** Stems 18-24" long, 1-1 1/2" wide, stiff and erect, mostly 3-angled, some flat, fairly sharply notched, few bristles 1/2" long, vigorous growth. Flower large, mandarin red (H.C.C. 17). (A.N. N19).

**LONDON PRINCE** Stems 18-24" long, 1-1 1/2" wide, stiff and erect, flat and 3-angled, somewhat rounded notches, very few stiff bristles 1/2" long, vigorous growth. Flowers medium, vermilion (H.C.C. 18). (A.N. S36 and S53).

**LONDON YOUTH** Stems 24-30" long, 1 1/2-2" wide, stiff, erect, mostly 3-angled, shallow notches, fair number of stiff bristles 1/2" long, vigorous growth. Flowers medium, Dutch vermilion (H.C.C. 717/1). (A.N. S39).

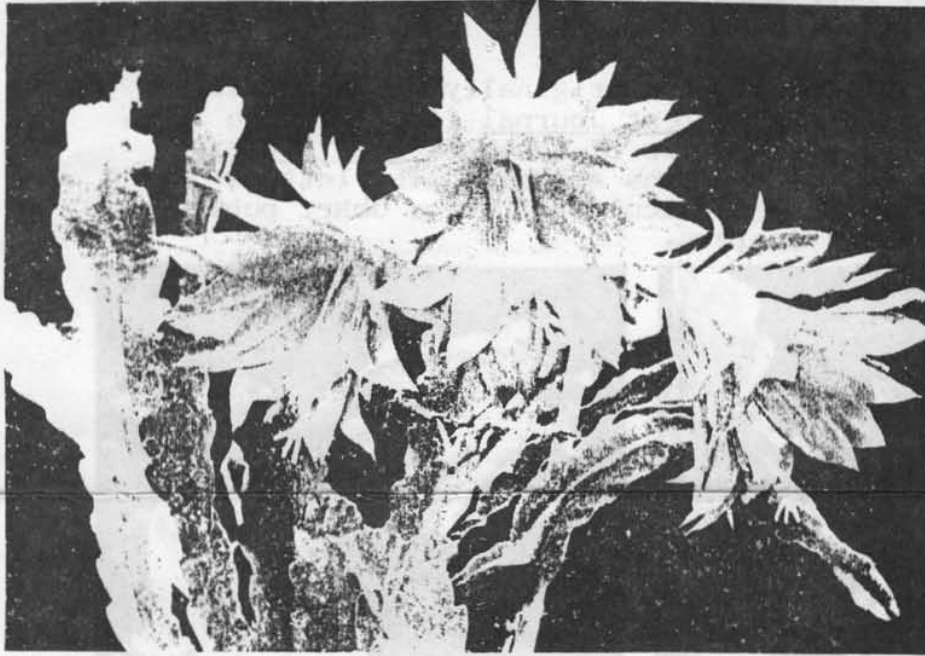


Fig. 11: LONDON SUPERB.

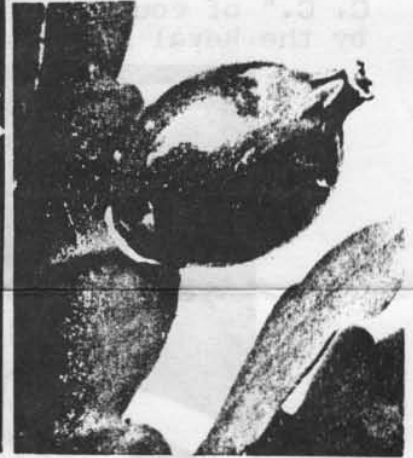


Fig. 14: LONDON MAGIC seedpod.

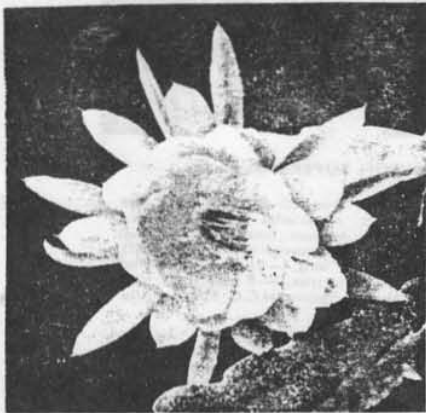


Fig. 4: LONDON DELIGHT.

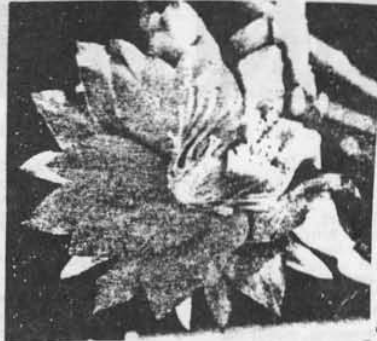


Fig. 7: LONDON GIRL.

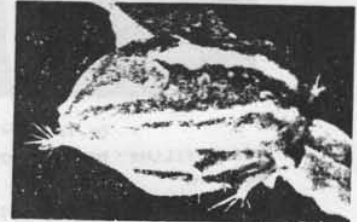


Fig. 10: LONDON LADY seedpod.

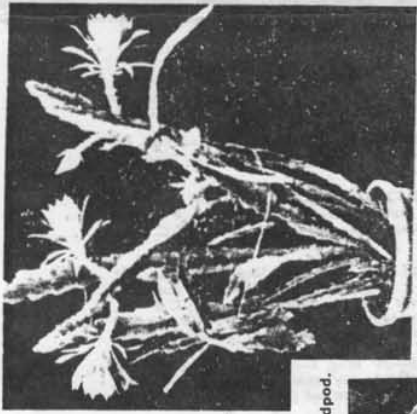


Fig. 2: LONDON BEAUTY.

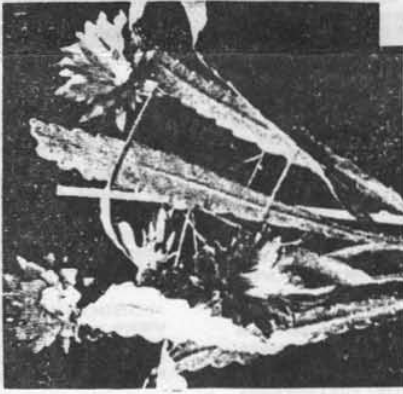


Fig. 6: LONDON GIRL.



Fig. 9: LONDON LADY.



Fig. 1: E. COOPERI seedpod.



Fig. 3: LONDON BEAUTY seedpod.

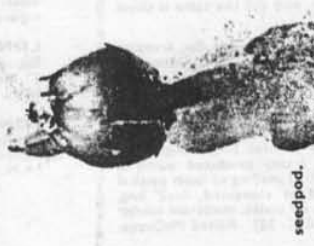


Fig. 5: LONDON DELIGHT seedpod.



Fig. 8: LONDON GLORY.