

San Diego

Epi News

Epiphyllum
Society

Post Office Box 2852 • San Diego, California 92112

PUBLISHED BY THE SAN DIEGO EPIPHYLLUM SOCIETY

President: Frank Granatowski (619) 460-6595

Corresponding Secretary: Ms. Gene Schmedding (619) 421-6510, 455 E. Naples, Chula Vista, CA 92011

MEETING: 2nd Wednesday 7:30 PM, Room 101 Casa del Prado, Balboa Park

EPI NEWS EDITOR: Pat Stebbins (619) 279-8026 DEADLINE FOR NEXT ISSUE: Mon. April 4

SEND ALL ITEMS TO: 10404 Orozco Rd., San Diego, CA 92124.

MEMBERSHIP: Joyce Bjorkman (619) 286-7170, 3827 Billman St., San Diego, CA 92115

MEMBERSHIP DUES FOR ONE YEAR ARE \$6.00 SINGLE MEMBERSHIP or FAMILY (MEMBER/SPOUSE) MEMBERSHIP U.S.A., \$12.00 INTERNATIONAL

(Note: number in parentheses on mailing label indicates dues month. Please check and keep current.)

WELCOME NEW MEMBERS:

March 9, 1983
VOLUME 7, NO. 3

Daisy Taylor (in Dec.),
Del Mar
Ernest Simmons, England



MARCH GENERAL MEETING, MARCH 9

You're in for a great evening folks! Our guest speaker will be Mr. Ernest B. Chew, Horticulturist (formerly with the S.D. Zoo), who will present a slide program on the plants of Hawaii. See you there!



MARCH REFRESHMENTS

...Penny Bunker

March is already here, and let's hope there are no winds as strong as we have experienced in the past month. There were so many ill during February, but we will look for them this month. Shamrock day will be the special time - so we may dance the Irish Jig in glee if our Epi's are growing well and setting bud. The helpers to bring goodies in March are:

Valerie Bailey	Blanche Hafiz
Lorna Barrows	Marcia Hultgren
Elinor Berry	Roger Mohling
Catherine Burger	Dorothy Ogdon
Madeline Dacey	Toini Wainwright
Margaret Fickes	



FEBRUARY GENERAL MEETING

...Gene Schmedding

There were 117 members and 9 guests at our February meeting.

Howard Jones spoke briefly on the progress of the new shadehouse at the Wild Animal Park. He also said that up to now there are 550 different varieties of Epi's at the W.A.P.

We always enjoy George French's description of the flowers on the display table and there were a lot of flowers for February. It seems that our unusual weather brought on a lot of early blooms.

Gene Lund was our speaker of the evening and he gave a slide show on several stages of growing Epi's. There were also slides of some of the displays at the W.A.P., and some from the late Richard Hartford's collection. There were slides that Richard had taken many years ago at the E.S. A. shows; the most striking was a large "peacock" made of Epi's that he had on his show table in Los Angeles.

Gene also had slides of Epi "apples" to show the many shapes and colors that the "apples" take on as they mature, and a slide of the fruit cut open to show the many seeds. All in all it was a very educational program. Gene's running commentary added interest, especially to some of

3/9/83

the newer members who have not had much experience with breeding Epi's, and didn't know what the "apple" was.

Mother's Day Show. Helen Barkdoll (Co-Chairman) has the chart for the table arrangements for the show. She is taking reservations for your choice of table. Don't wait until the last minute to select the table you want, Mother's Day will be here before you know it. We don't want a lot of last minute problems as our Mother's Day show is one of the big attractions in San Diego. Our show has been a thing of great pride for our Society in the past, and we want to keep on having the "Best Flower Show in California".

As Corresponding Secretary, I have received letters from people from all over, telling me that they always make it a point to visit our Mother's Day Show when here visiting relatives or friends, or just touring San Diego.

Gene Lund (Chairman) and Helen need a lot of help on the day of the show. I hope that a lot of you members will pitch in and help make this the best show ever. You will have the satisfaction of knowing that it was through your efforts that the show will be the success it has been in the past.

Please offer your help to either Gene or Helen. They will be very grateful.



CUTTING TABLE, GENERAL MEETING

As was announced at the February meeting, members bringing cuttings for the cutting table raffle will no longer be paid for the cuttings. We are trying this on a voluntary "donation" basis for awhile to see how it works out.

The raffle procedure remains the same - one dollar for one ticket (you can buy as many tickets as you want). Your name is called to come choose one cutting, then re-called for as many times as we have cuttings (or time) for. A good deal for a dollar!



PROPOSED REVISION TO BY-LAWS

The Executive Board has reviewed and approved the following amendment to our by-laws. This will be presented to the membership at the March 9 meeting for membership approval.

"ARTICLE VII: OFFICERS Section 10: ACCOUNTABILITY OF OFFICERS

Every officer, both elected and appointed, shall be accountable to the Executive Board for his/her actions on behalf of the San Diego Epiphyllum Society, and shall submit an outline of his/her proposed actions for Board consideration and approval by a simple majority vote."



ANNUAL EPIPHYLLUM (MOTHER'S DAY) SHOW OF THE SDES (May 8)

There is only one more general meeting between now and the annual show.

For those of you who are new to the society, the annual Epi show is our major fund raiser from which we finance our Christmas Party/Awards Banquet, the operation expenses of our general meetings, our guest speakers, the Epi News, and any other expenses that crop up (including the purchase of private collections, and more recently the proposed SDES Epi handbook.)

The show is a one day affair, with members setting up their displays the evening before and attending all day Sunday until closing.

Besides those who display, there is a need for hosts and hostesses, people to attend the cutting room sales, light duty in the kitchen, and many miscellaneous tasks.

You newer members are urged to show your blooms, or bloom, if you only have one. There will be our "Epi Trees" (manzanita branches with containers for single blooms attached) for single blooms or several. The important thing is to display what you have. Remember, the more blooms we have to look at, the more cuttings will be sold.

Members' generous contribution of

3/9/83

cuttings is very important to the success of our show. In the past, we have almost always sold all the cuttings we had, usually long before show closing time.

Well, there's the rundown of the operation, and here's a list of show rules and regulations - next month any final details will be published.



GUIDELINES FOR THE 1983 ANNUAL EPIPHYLLUM SHOW ON
MAY 8 (HOURS 10:30 AM to 4:30 PM)

All tables must be reserved prior to May 1 with Chairman Gene Lund or Co-Chairman Helen Barkdoll. Reservation slip to be signed by exhibitor at the Library table, general meeting, or reserve by phone with Helen (619) 469-9165.

Exhibits to be set up on Saturday night, except for adding flowers. Uncomplicated displays may be set up early Sunday.

No spraying of any substance is permitted in the showroom. This is a park regulation. Any exhibit which is set on the floor must have a protective cover over the floor. Use fire resistant material and follow all park regulations.

All exhibits should feature flowers. Flowers to be named and labeled. Exhibitors are encouraged to follow the theme of the show "Salute to Balboa Park" on any exhibit of one-half table or more.

Exhibits should be completed by 10:00 AM Sunday, so that boxes can be removed and the floor swept before 10:30. Anyone having 6 or less blooms should bring them in before 9:00 AM so that the epi-trees can be finished, or make a floral bouquet of them.

All exhibitors should help in the cleanup of the room after the show. Bring a cloth so that you can wipe off your own table cover. Please pitch in and help as there is a lot to be done. Bring your own container for water.

Remember not to tie up the carts in setting up or dismantling your table. There are others waiting to use them, so empty the carts and return them at once. There are only three carts for all of us. Every effort will be made to accommodate the exhibitor.

All exhibitors or workers are asked to bring a dish for the potluck at lunch. We will try to have this ready by 10:30 AM. This potluck is for exhibitors and workers only. This is not a sit-down meal; this is to make it convenient for those who will be in Room 101 all day so you won't have to leave the exhibit area to go out to eat.)

Wear your San Diego Epiphyllum Society Badge.

Have a happy show!

...Helen Barkdoll



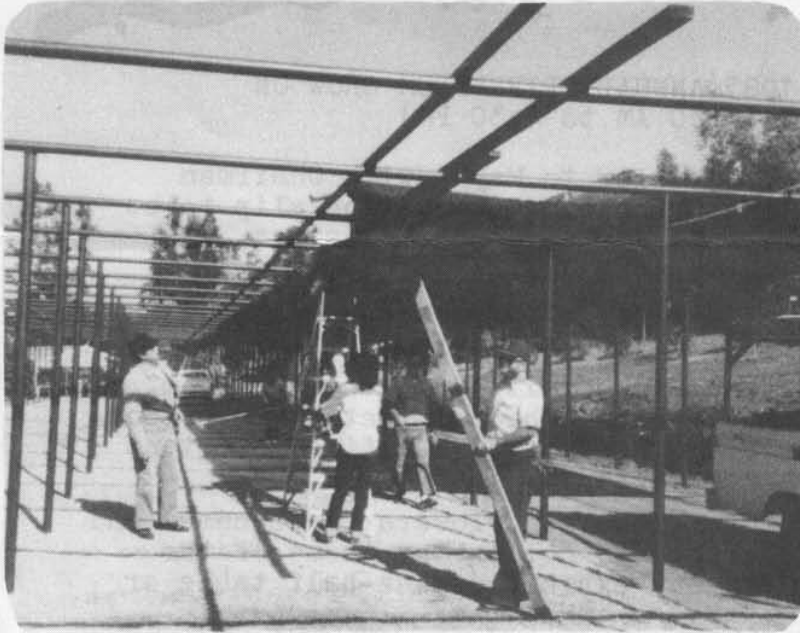
3/9/83

THE NEW WILD ANIMAL PARK SHADEHOUSE

...Pat Stebbins

For those of you who have contributed to the new Epi shadehouse at the Wild Animal Park but can't get to it, here's a glimpse of what it looks like. Impressive, huh? Try to visualize it filled with tables and hanging pots!

A lot of hard work has gone into this project and more yet to come. Those who have also been able to contribute their time and muscles are to be highly commended.



New Shadehouse



Disaster in No. 1

Here also is a picture of a disaster in our original (No. 1) Epi shadehouse. The recent rains were too much for the old posts and they tried to get away down the hill. I understand we lost about 35 of the large clay pots, but I think most of the plants have been re-potted and all were saved.

Nate Ogdon says that the crew in the Feb. 19 work party put up the Saran cloth cover, repotted the damaged pots from No. 1 house, and also weeded the No. 2 house. (I got up there about 9:30 AM to take some pictures, and they were so busy they looked like a handful of fishin' worms on a hot rock!)

A list of the people who made up the Feb. 19 work party:

Elizabeth Glover
Howard Jones
Dick Chadwick
Bill Foster
Gene Lund
Leroy Schraeder
Ed Post
Ed Broz (finished welding)
Vernon & Sako Hook
Rex & Susie Ellis,
Selena & Leo
Gus Schlapfer
Ron Miller
John Piland
Dr. Hafiz
George French
Nate & Dorothy Ogdon
Ray Conser



3/9/83

Chuck Everson of Rainbow Gardens frequently sends us things that might interest us, so here is a book review column he found, from the Canadian Succulent Information Exchange Journal in Canada:

SOME RECENT JAPANESE ILLUSTRATED BOOKS ON SUCCULENT PLANTS

- MIKE HAWKES

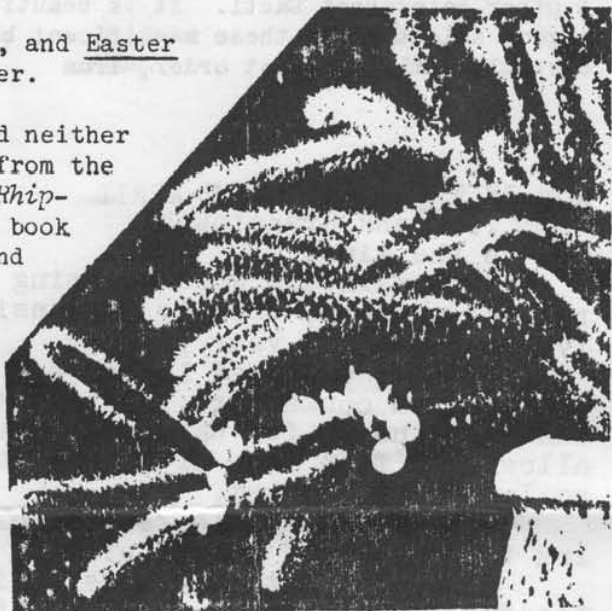
In May of 1982 I had the good fortune to visit Japan on a business trip. While in Tokyo I managed to find a couple of free hours to explore the Maruzen bookshop which occupies eight floors in a department store sized building. It is reputed to be the largest bookshop in Tokyo.

I cannot read or speak Japanese so it would have taken me a long time to locate the cactus book section by pulling the books off the shelf one-at-a-time and looking at the pictures until I found one of a cactus! Fortunately I had a Japanese friend with me to help translate and fortunately I knew the Japanese word for cactus (he didn't!) was 'Shaboten'.

My friend enquired at the main desk and we were soon whisked up a couple of floors and shown to an area where the botany books were shelved. To my delight there were a number on cacti and other succulents. Some of them were magnificently illustrated in colour and definitely worth having in your library even if you don't speak Japanese. Here is a brief summary of the best ones I saw:

Hashizume, T. 1982. Peacock Cactus, Shako Cactus, and Easter Cactus. Nippon T.V. Network, Tokyo. Hardcover. 3,500 Yen (approximately \$17.50 Canadian).

My Japanese friend translated the title for me and neither one of us were sure what 'Shako' meant. Judging from the contents I suspect it may be a Japanese term for *Rhipsalis* spp. or rainforest cacti. At any rate this book had just come off the press when I was in Tokyo and was prepared by the Japanese T.V. network from a program they had done on the cultivation of these plants (I was lucky enough to see the TV show during my stay too). The book is primarily concerned with epicactus hybrids although it also covers *Epiphyllum* species, *XAporophyllum* hybrids, various *Schlumbergera* spp. including hybrids and cultivars (of Crab & Christmas cacti), *Rhipsalis*, *Selenicereus*, & *Aporocactus*. Although the text is in Japanese the plant names [Illustration right: *Rhipsalis saxicola*



are in Latin or English and the colour photos are generally excellent. For those of you who can't travel to Japan to get a copy you will be happy to know that Rainbow Gardens (P.O. Box 721, La Habra, Ca., 90631) has just imported some copies for \$19.95 US + \$1 postage (listed in their latest book catalogue as EPIPHYLLUMS AND OTHER RELATED GENERA).

Japan Succulent Society. 1981. Colour Encyclopaedia of Succulents.

Seibundo Shinkosha Publ. Co., Tokyo. Softcover. 4700 Yen (approx. \$23 Can.)

The price is high, but so is the quality of the book. The photographs are all in colour (812 of them) and cover a wide range of succulents (excluding cacti) including many newer discoveries. I particularly enjoyed the section on *Conophytum*. I had not realized there was so much diversity in body shape and markings and flower colour within the genus. I'll be adding a few *Conophytums* to my collection when I grow my annual batch of seed next spring. This book is available in N.America from Abbey Garden Press (Box 3010, Santa Barbara, CA 93105)

3/9/83

Hirao, H. 1979. Colour Encyclopaedia of Cacti.

Seibundo Shinkosha Publ. Co., Tokyo. Softcover. 4700 Yen (approx. \$23 Can.).

This is the companion volume to the previous book and the photography is equally superb. Text in Japanese, but plant names in Latin. Some interesting novelties like the bigenera hybrid *XTheobergia* (*Thelocactus X Leuchtenbergia*) are illustrated. This book is available in N. America from Abbey Garden Press.

Ito, Y. 1980 Charming of Flowers Cacti. Japan Cactus Laboratory. Hardcover.

3900 Yen (approx. \$19 Can.).

This book is for the more serious bibliophile as the entire text including figure captions is in Japanese. There are many beautiful colour photos primarily of *Lobivia* spp., *Echinopsis* spp. and what appear to be *XEchinobivia* hybrids. Not only the title of this book is charming, the format is too, running from back to front and left to right! To my knowledge there are no sources of this book outside Japan.

Another publication which caught my eye was a magazine dedicated exclusively to *Aloe vera* and its virtues. The entire magazine is in Japanese so I can't even give you a title. The colour photos are fairly self-explanatory and I was truly amazed that there were so many uses of *Aloe vera* aside from the standard treatment of burns and cosmetic uses. Other uses illustrated include making a drink out of it, using it in salads, vegetable dishes, and deserts.

(Just received my copy of the 1983 plant catalogue of Rainbow Gardens entitled, Epiphyllums & Other Rainforest Cacti. It is beautifully illustrated with many colour photos and of a good selection of these magnificent blooming cacti. Plant & book catalogues, \$1 US, deductible with 1st plant order, from P.O. Box 721, La Habra, Ca 90631.)



NOW IS THE TIME MARCH-APRIL

...Frank Granatowski

Now is the time:

- to maintain good grooming by removal of dead, spindly and unsightly branches from your plants.

- to remove dead leaves and debris from containers, thereby eliminating a haven for harmful pests and allowing a free flow of oxygen to the soil and root system.

- to remove scale residue clinging to outside of containers.

- to give mature plants a final feeding of Nitrogen-free liquid fertilizer such as Bloom-Builder or Hi-Bloom, to promote healthy buds and blooms.

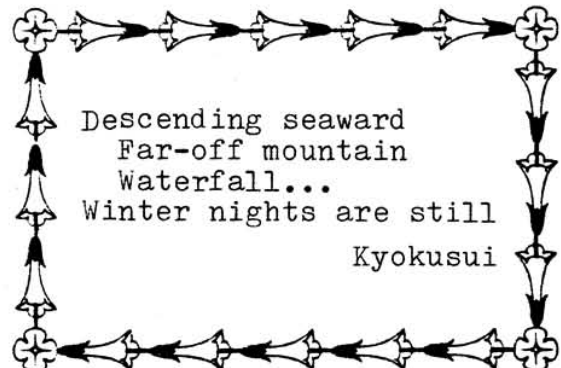
- to utilize control methods to inhibit aphids and ants (who are attracted by the nectar) from attacking new buds and blooms. Insecticides such as Orhtene and Malathion can be used. READ AND FOLLOW DIRECTIONS ON LABEL CAREFULLY!

- to remember not to attempt to relocate plants once buds have begun to form.

- to bait for snails which become more active with the wet weather. A few granules of *Sluggetta* placed at the base of the plants has proved to be very effective, and it leaves little or no residue.

- to repot last year's cuttings that have outgrown their present container.

- to gather and store rain water for future use. If possible store in covered opaque containers to avoid infestations of larvae and buildup of algae.



3/9/83

--Press Release from the S.D. Zoo:

ZOO INSTITUTE ANNOUNCES SPRING BOTANICAL LECTURES

Zoo "Botany for Breakfast"/Wild Animal Park "Botany for Brunch"

The San Diego Zoo's popular botanical lectures series continues this spring with an expanded program which will highlight the Wild Animal Park's plant collection; as well as the Zoo's. Each lecture focuses on plant species in current cultivation which are adaptable to domestic landscapes, and emphasizes growth characteristics, landscape uses and cultivation requirements. Speakers are selected for their recognized expertise in the subject area and will be available to answer individual questions following each presentation. Actual plant specimens may be reviewed following a self-guided tour map which also includes an appendix providing further information and suggestions on how and where to obtain propagation material. Wild Animal Park tours will be personally guided.

At the Zoo, lectures begin at 8 a.m. and 10 a.m. in the Zoo's Rondavel room. \$6.00 fee includes continental breakfast. Non-Zoo members must also pay Zoo admission. Advance reservations are required. Call 231-1515, ext. 412.

At the Wild Animal Park lectures begin at 9:30 and 12:30 at the Park's Mombasa Pavillion. \$7.50 fee includes brunch. Non-Zoo members must also pay Wild Animal Park admission. Advance registrations are required. Call 231-1515, ext. 412.

MARCH --

- 13 - 9:30 & 12:30 - Botany For Brunch - "Baja California Garden" -
Jim Gibbons, Wild Animal Park Horticulturist
- 26 - 8:00 & 10:00 - Botany For Breakfast - "Australian Myrtles of the
San Diego Zoo" - Chuck Kline, Sea World Horticulturist

APRIL --

- 10 - 9:30 & 12:30 - Botany For Brunch - "California Native Garden" -
Bill Knerr, San Diego Zoo Plant Propagator
- 23 - 8:00 & 10:00 - Botany For Breakfast - "Coral Trees of the San Diego
Zoo" - Chuck Coburn, San Diego Zoo Horticulture

MAY --

- 15 - 9:30 & 12:30 - Botany For Brunch - "Protea Garden" -
Cliff Severn, Protea Specialist
- 21 - 8:00 & 10:00 - Botany For Breakfast - "Ferns at the San Diego Zoo" -
Phyllis Bates, Past Editor of LAIFS--Fern Society
Journal.

3/9/83

CLASSIFIEDS

CALIFORNIA EPI CENTER 1983 full-color "Flowering Jungle Cacti" Catalog, \$1.00 (deductible). Hundreds of Orchid Cacti (Epiphyllums), Rhipsalis, Christmas and Easter Cactus, Rattail Cactus, Hoyas, Succulents. Nursery open by appointment. Please call for directions. California Epi Center, Dept. SD83, P. O. Box 1431, Vista CA 92038. Phone (619) 758-4290



RAINBOW GARDENS now has the new yellow Christmas Cactus "Gold Charm" at \$5.00 per small rooted plant, in stock and available for pick-up at our Nursery or UPS shipment (\$2.50 charge for Calif., \$3.50 elsewhere) plus 6% sales tax (Calif. residents). NEW 1983 plant/bookshop catalogs \$1.00 (deductible). RAINBOW GARDENS NURSERY & BOOKSHOP, P. O. Box 721-SD, La Habra, CA 90631. Credit cards accepted (min. plant order \$10).



Will the person who was to get a cutting of JUNGLE FURY from Sam Markey please drop him a post card? Mr. Markey has misplaced your name.
Sam Markey, P. O. Box 3506,
Otay, CA 92011

