

Epi News

San Diego

Epiphyllum
Society

Post Office Box 2852 • San Diego, California 92112

VOLUME 7, NO. 6

June 8, 1983

PUBLISHED BY THE SAN DIEGO EPIPHYLLUM SOCIETY

MEETING: 2nd Wednesday 7:30 PM, Rm. 101, Casa del Prado, Balboa Park

President: Elinor Latimer (619) 463-1655

Corresponding Secretary: Debbie Capp (619) 469-4784

4132 Charles St., La Mesa, California 92041

SEND ALL NEWS ITEMS TO EPI NEWS EDITOR:

DEADLINE FOR NEXT ISSUE:

Pat Stebbins (619) 279-8026

Fri. July 1

10404 Orozco Rd., San Diego, California 92124

Membership: Marian Foster (619) 266-0355

6590 Springfield St., San Diego, California 92114

Check or money order payable to San Diego Epiphyllum Society, MEMBERSHIP DUES FOR ONE YEAR \$6.00 SINGLE MEMBERSHIP or FAMILY MEMBERSHIP (MEMBER/SPOUSE only) U.S.A., \$12.00 INTERNATIONAL (Note: Number in parentheses on mailing label indicates dues month. Please check and keep current.)

WELCOME NEW MEMBERS:

Thelma M. Groff, Escondido
Velva & Forest Mansir, Escondido
Phyllis Flechsig, Encinitas
William Stephenson, Escondido
Mr. & Mrs. John C. Peak, La Jolla
Reg & Janet Wagner, Riverside
Alice Parcell, Escondido
Maxine & Frank Parcell, Redwood City
Eugene R. Gerguson, Solana Beach
Gertrude G. Henig, San Diego
Herbert & Elizabeth Jameson,
San Diego
Manuel Nascimento, San Diego
Dennis & Terri Parham, Chino
Christine Nagy, Encinitas
Donald Thompson, El Cajon
Pat Totten, La Mirada
Walter & Jeanette Reynolds, San Diego
Cindy Drake, San Diego
Ed & Beverly Erdman, San Diego
Juanita Ayala, San Diego
Roseanne Groff-Simpson, San Diego
James DuBois, El Cajon
Cathy Summers, San Diego
Leonor Anbayo, San Diego
Mariana Geck, San Diego
Kurt Petersen, West Germany

JUNE MEETING, JUNE 8

June is a happy month for the Epi Society. Our shows are over, we still have blooms to glory in, and we celebrate our Society at our June general meeting. If you think you're just about "Epi'ed out", come to the June meeting and get revived - bring your blooms, and cuttings for the cutting table.*

We will install the new officers elected for the coming term, have a piece of SDES Birthday Cake, honor our past presidents and enjoy an interesting program.

Our guest speaker will be Mr. Jack Percival (who was our guest speaker last August with that marvellous collection of Bromeliads). Mr. Percival has just returned from an 8-week tour of South American countries and will give us a slide program titled "Tropical Plants and Tensions of South America"; a great evening in store for you - see you there!

*CUTTING RAFFLE FREE THIS EVENING!

JUNE REFRESHMENTS

As you all know, we've got just about the classiest refreshment table layout of all the flower clubs. This is due to those generous and imaginative creations brought in each month by (at least) ten members, and the artistry in which these goodies are presented by our own Penny Bunker.

The sign-up sheet for refreshments is on the Hostess Table as you come in, please take a turn at least once throughout the year. I'm not sure about the quantity to bring, but figure 3 or 4 dozen cookies or cut cake portions (200 people can go through a lot in no time).

Those signed up for June:

Gil Boldman	Barbara Schraeder
Mary Etta Branch	Denise Shepley
Catherine Burger	Pat Stebbins*
Peg Minardi	*(I will fill in the
Dorothy Ogdon	10th slot again
Mary Post	this month unless
Chris Sanchez	someone calls to do
	it for me, 279-8026)



JUNE BOARD MEETING, for both incoming and outgoing board members (and spouse or friend) will be held at the home of Pat and Jerry Stebbins. It will be a potluck so bring a casserole, salad or dessert. Soft drinks, punch and HAM will be provided.

June 22, 6:30 PM (or earlier if you like..)

10404 Orozco Rd.
(Tierrasanta) San Diego 92124
Phone 279-8026 if you need directions)

POTS!

Jack and Carrie Stafford regret to announce they will no longer be selling plastic pots and hangers at the general meetings.

Anyone else out there to fill that need?

EPIPHYLLUM SOCIETY OF AMERICA

The ESA puts out "The Bulletin" every other month. Membership to the ESA may be paid for at time of membership to the San Diego Epi. Soc. (the Membership Secretary will send it in for you), or you may send your dues to: ESA, P. O. Box 1395, Monrovia, California 91016. Dues are \$6.00 a year U.S. and Canada. \$7.00 a year other countries (if Airmail dues are \$11.00). Please send international money orders payable in U.S. dollars. Check or money order payable to the Epiphyllum Society of America. They do not send receipts for renewals and no renewal notices. Mailing label has current delinquent date.

Meetings are at Los Angeles County Arboretum, 301 N. Baldwin Ave. Arcadia, California, first Tuesday of every month (except January), 7:30 PM to 10 PM. Refreshments are served, parking and admittance free.

The new ESA Directory of Species and Hybrids is now available. This is a new and revised printing of the old hybrid listing, incorporating the first 4 addendums for years '78 thru '81, and includes addendum for 1982. It is \$5.50 at the meetings. To have it mailed it is \$5.50 plus \$1.50 for postage and handling, a total of \$7.00. Send \$7.00 to Epiphyllum Society of America
P.O. Box 1395, Monrovia, California 91016.

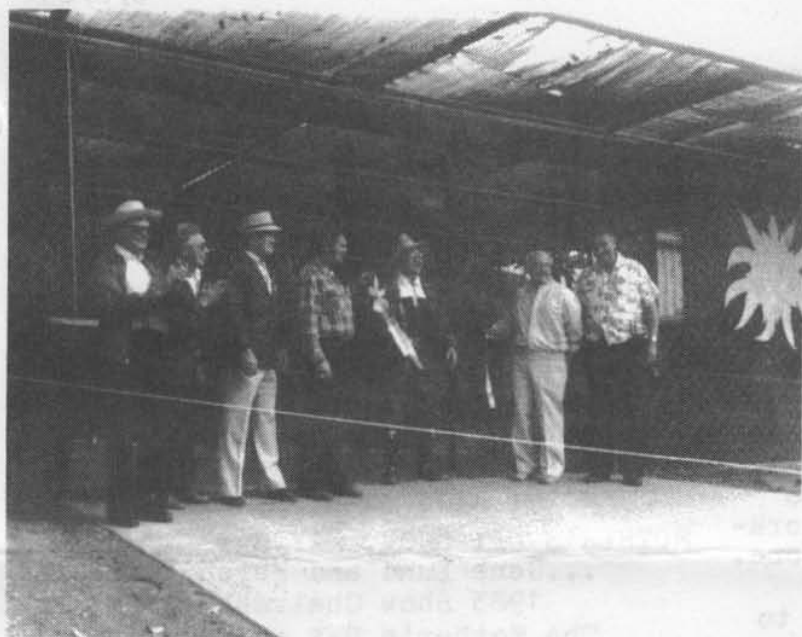


WILD ANIMAL PARK SHADEHOUSE PROJECT AND GREEN THUMB SHOW, APRIL 30, MAY 1
...Nate Ogdon

May arrived on schedule following a rather hectic April. Let me tell you about it.

As you know, the final days of preparations for our Grand Opening flew by much too fast. The Park, in getting some of their things done, poured a cement ramp at the entrance to the shadehouse, a beautiful job. The next morning, a rental company, delivering tables for our potluck, backed onto the uncured cement, and whappo - there went a corner broken into a dozen pieces. Oh, well!

6/8/83



From left to right:

BILL FOSTER, DOROTHY OGDON,
NATE OGDON, JIM GIBBONS,
HOWARD JONES, GEORGE
FRENCH, DICK CHADWICK.

*(George French's bas relief
wood-carved Epiphyllum is
visible on the right. There is
also one on the left of
the entrance. You have to see
this building to really
appreciate it - Pat)*

For our part, the W.A.P. regulars got most of the pots in place and final touches to the lath and made cuttings for the Green Thumb show. The work party consisted of George French, John Piland, and Ray Conser working on the lath; late in the afternoon George put up his giant wood Epi's. Good job, George!

The Broz family, Dick Chadwick, Dorothy and I made cuttings (597). This happened on April 16th; on the 19th more final touches, staining the lath, marking 4" pots for the show, and on the 21st and 23rd, Ed Post got into the staining with us. Then...

Finally, April 30 arrived, the day we had been looking forward to for so long - the Grand Opening. No press, no TV coverage, just about three dozen stalwarts there to watch Jim Gibbons and Howard Jones cut the ribbon, 10:30 AM and the job was done. Gene Lund did record it on video tape though (that should make a good program some night). Then the hourly tours from the covered trail where since 8 AM members had set up tables of blooms to whet the appetites of the buying public.

The new house started going up October 16, 1982, but months earlier the Park had graded the pad. Gene Lund shopped for the pipe and finally got it delivered in September. The CCC boys dug the holes (some terribly out of line but thanks, fellows).

After the upright posts were in place (no easy task in itself, thanks to the working party again), the top had to be put on - so using some "connections", three Navy Chiefs came to our rescue. They had to work against time, working on their weekends in some of the worst weather in years, and finally, one week before their WESTPAC deployment, it was done. Back to Gene - he found some Saran. Now it started going fast. Now the gravel. Now the wire hangers. Now the plants. Now, after 6-1/2 months of volunteer labor and donations, it was done.

Out front a plaque containing the names of these volunteers and donors hangs beside one of George's giant carved-wood Epiphyllums. The ramp has been removed and replaced by a new one. The Park likes the shade-house so well they have scheduled two meetings in it, one a top level thing (maybe we should start charging them rent - just joshing, Jim). They even installed lights for that one, thanks for that Jim - we'll be needing it later on.

Our potluck turned out to be a real fun thing. At 4 PM (almost) we all made our way to the new house. About 165 Epipholics came and enjoyed. I think most everyone liked what they saw. We had a second ribbon cutting and posed a little for video - Gene then on to better things - FOOD!

All in all it was a good show, both on the covered trail and at the new house. Thanks everyone, the exhibitors, the salespersons, and the potluckers.

On Sunday, May 1, it was a repeat on the trail. More fresh flowers, more sales, and more tours. The Los Angeles people were welcome as usual, and thanks for your flowers. We made a few dollars for the Park but I'm not sure how much.

It's not all done though. We still are moving plants in and out, back and forth, from one house to the other. At the end of each working day it looks a little more done. An example is the upper house.

George had enough lath left over to put a "front" on it too, really dresses it up. Soon he'll start installing new work benches and potting tables in there.

We kind of took a holiday what with the Mother's Day Show, but starting again on May 14 we had members standing by in the new house to answer any questions from the people on a new part of the W.A.P. walking tour program. The Park hopes to have a new trail next year to our house during the blooming season. This year the people are having to climb a rather steep road to get there. We'll need your help again, just to be there in case someone has a "what if" or "how do you". Think about it and volunteer when the time comes next year. You'll be glad you did.

I know there were lots of working parties since Oct. 16, and I know some of you didn't get proper recognition. For you I say now - thank you, thank you.

And to those of you who attended the potluck, I want to thank you for greeting and accepting the wives and families of those three Navy Chiefs. Thanks.

Those who contributed blooms and/or sales table time on one or both days April 30, May 1:

John Piland	Dr. Hafiz
Don Irwin	Alita Feedback
Ken & Mary Etta	Dave, Sharon &
Branch	Tawny Wilsterman

Gus Schlapfer
Vernon & Sako
Hook
Susie Ellis
Ron & Joan
Miller
Marian Foster
Debbie Capp
Bev Garber
Howard & Betty
Jones
Nate & Dorothy
Ogdon

Pat & Jerry
Stebbins
Jan Shores
Marcia Hultgren
The Broz Family
Shirley Rogers
Sam Markey
Gene Lund
George & Madeline
French



MOTHER'S DAY SHOW, MAY 8

...Gene Lund and Helen Barkdoll,
1983 Show Chairmen

The Mother's Day show was a brilliant success, thanks to all the willing hands and stout hearts. Due to a slow-starting blooming season this year, we learned that it only takes a few flowers artistically placed to make a very distinctive display. Many member's individual blooms were featured and more attention was given each bloom. The overall effect gave a light, airy, bouyant feeling, accompanied by the pleasant background music provided by Matt Stafford, which put us all in a relaxed, harmonious mood.

The kitchen was a model of hospitality and efficiency thanks to Susie Ellis and Faye Broz and their helpers. The delicious ham was cooked and sliced by the Johnstons, and Gwen had charge of supplies. All the food was one epicurian delight after another. It is worth having a display just to be able to share this fellowship with the other workers.

Visitors were greeted and made to feel welcome by the wonderful staff of hosts and hostesses. So much so that Joyce Bjorkman had 16 people sign up as new members!

The cutting room ran very smoothly and Dick Chadwick and Ernest Angus took in \$3,047, including over \$300 Ernest promoted in a special handbook fund selling only "Soft Lights" cuttings. We will have to incorporate this method into next year's show.

All in all it was a very successful, spectacular, wonderful, loving, sharing show. We want to thank EVERYONE who helped make it so, because without YOU, there would be no show.

BEST OF DISPLAY ribbons were given:

Bill and Amelia Foster, GRAND EMPRESS
San Diego Wild Animal Park, GLAMOUR
Ed and Faye Broz, BOS'N HARTFORD
Gus and Marge Schlapfer, CLARA ANN
John and Lee Holcomb, BOHEMIENNE
Cliff Rice, JENNIFER ANN
Jackie Rice, RINRISH
Ray Conser, PUNCH BOWL
Greg Balvin, ORANGE GIANT
Harry Johnson and Leo Kihm,
RHIPSALIDOPSIS GARTERNII
Roger Mohling and Valerie Ann Bailey,
PEACOCKII
Joyce Bjorkman, PADRE
Dick and Elinor Latimer, and
Rick Latimer, CLOWN PRINCE
George and Jean Watson,
WAIKIKI RAINBOW
Daniel Broz, ENCHANTRESS
Nate and Dorothy Ogdon, LULU
Gene Schmedding, BROWN BEAR
Betsy Bollman, KING MIDAS
Sam and Adela Markey, ACAPULCO SUNSET
Sanford Roberts, DELIGHT
Ed Gauss, KITTY HAWK
Jack and Carrie Stafford, KOHINOOR
Don and Lucile Irwin, BERTHA
TALBOT LOOSE
John and Jerry Clancy, JENNIFER ANN
Bob and Helen Barkdoll, TANGERING
Gene and Kathleen Lund, BLACK LIGHT
Jack and Cecile Bradley, ROSETTA
Pat and Jerry Stebbins, BENGAL
Michiko Munda, EASTER ISLAND
George and Madeline French, Seedling
PEGASUS on TROPICAL NIGHT
John Piland, Seedling, Cocks's 8 x 48
Susie Ellis and Sako Hook, EMPRESS
Bob Leffler, DELORES DEL RIO
Ron and Joan Miller, MAUI
Howard and Betty Jones, BLUSHING DOLL
Dr. Hafiz, BRANDISH
Debbie Capp, FIESTA
Margaret Fickas, MONTEZUMA
Milt Turner, HERMOSH VIOLETTA
Chuck and Lucile Saltzer, PEACOCKII



SDES OFFICERS ELECTED MAY 11

President: Elinor Latimer
1st Vice Pres.: Gene Lund (Programs)
2nd Vice Pres.: Marian Foster
(Membership)
Treasurer: Randy Light
Recording Secretary: Margaret Pethley
Corresponding Secretary: Debbie Capp
Directors: (2-yr. term)
Greg Balvin Gene Schmedding
Helen Barkdoll Ron Miller
George Jennings

Our outgoing Executive Officers and Directors deserve our recognition and gratitude for their time and hard work in behalf of the San Diego Epiphyllum Society. They are: Frank Granatowski, President; Milt Turner, 1st Vice Pres.; Joyce Bjorkman, 2nd Vice Pres.; Lynn Brokaw, Recording Secretary, and Gene Schmedding, Corresponding Secretary. Our outgoing Directors: Dick Chadwick (whose term was completed by Marian Foster), Dr. Hafiz, Ed Lucero, Elinor Latimer and George Watson.



MAY MEETING, MAY 11

...Gene Schmedding

Our lovely month of May is almost over. What a month! Our beautiful Mother's Day show was a great success, as usual, thanks to our chairman Gene Lund and his most able co-chairman Helen Barkdoll. I am sure that Helen never realized the amount of work involved in putting on our flower show, but she dove right in and said "sink or swim I'm going to do it", and do it she did. Congrats to both of you from all of us. And Gene, your idea for hanging plants in the patio was a great idea, they were beautiful.

May is also the election month. We have a lovely lady, Elinor Latimer, for our new president. We know she will do the office proud. Our new 1st Vice Pres. is Gene Lund, who is bound to give us some interesting programs for the coming year. 2nd V.P is Marian Foster, Recording Secy., Margaret Pethley, and Corresponding Secy., (which office I

6/8/83

hate to give up, but must) is Debbie Capp. I hope that she has as much fun as Corresponding Secretary as I have over the last two years. And Treasurer Randy Light (lucky for us another year doing a great job). We have five new Directors this year: Greg Balvin, Helen Barkdoll, Ron Miller, George Jennings and Gene Schmedding. Installation will be at our next regular meeting, June 8.

Friends of Bill Nelson will be sorry to learn that he will be in the hospital for quite some time, so I know he would appreciate cheerful cards from the members. They can be sent to his home and Ruth will take them to him (4253 Maryland St., San Diego 92103). He is suffering from a broken thigh, so will not be back on his feet for a long time.

"Mr. Epiphyllum" himself, Howard Jones, was our speaker at the May meeting. He brought some large photos that he had taken years ago of desert blooms, waterfalls, Orchids, and camels. He also showed some interesting slides of the proper way to photograph an Epi, also pictures of some of his own crosses. An enjoyable program, as usual. When it comes to taking pictures, Howard really knows his stuff.



BUS TOUR AND E.S.A. SHOW, MAY 15

Ed Broz reports that the bus tour was a great success (also, the bus didn't break down or hit anybody and they brought back the same number of people they left with).

They first stopped at Hurst's Nursery and Rainbow Gardens. These nurseries deserve our warmest thanks for all the trouble they go to for our tour. They provide refreshments and a place to put your tired bottom and hot feet. They have immaculate shadehouses and top quality rooted cuttings and will give you all the free advice and information there's time for.

Then, on to the E.S.A. Show for a pleasant hour or so. I understand it was even better this year than

last. The SDES was again well represented with about 10 tables and even entered some blooms in the ESA competition (and took a prize or two). The SDES people who displayed were Helen Barkdoll, Gene Lund, and Dr. Hafiz. Helen got a 1st Prize ribbon for her new seedling and a Special Award for her "How to Grow Seedlings" display. Gene Lund got 2nd Prize for a seedling and also a hanging plant "Star Flight", a 1st Prize in Div. 4, Sec. 5 "Display with Multiple Epi's" and a Special Award for his blooming plant "Born Free". Nice going, gang.

On to Beahm's Nursery, which was a lovely surprise. Our members seemed to be quite impressed with the selection of plants and the appearance of the nursery. This one will probably be in the plans again for next year, also. After that, a stop at Roger's Nursery, not specifically an Epi nursery but quite large with a wide variety of garden items and plants.

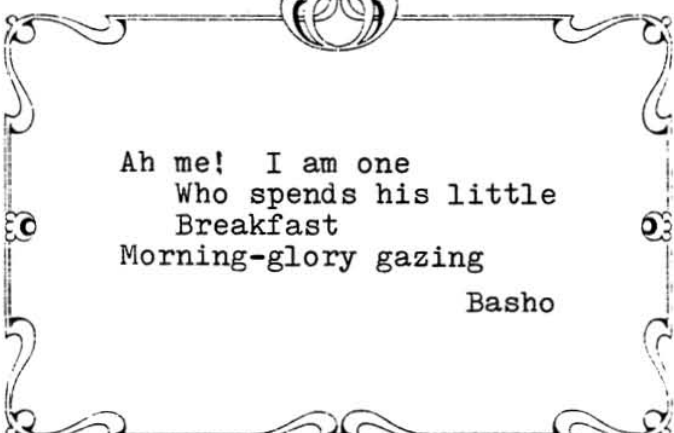
I'm sure on the return to San Diego, there were 36 people already thinking about next year's tour.



OPEN GARDENS:

June 26, Sunday 9 AM - 4 PM

Elmer and Marian Foster
6590 Springfield St.
San Diego 92114
phone 266-0355



Ah me! I am one
Who spends his little
Breakfast
Morning-glory gazing
Basho

NOW IS THE TIME, JULY AND AUGUST

...Frank Granatowski

Now is the time:

- to fertilize plants that have completed their blooming cycle with fish emulsion, slow release Nitrogen fertilizer or any good balanced fertilizer. DO NOT OVERFEED.
- to remove spent blooms and unwanted apples, in order to conserve the plant's vitality.
- to transplant to larger containers, plants that have outgrown their present containers, i.e., transplant 4" pots to gallon pots and gallon pots to 2-gallon pots. If you have the necessary garden space it is advisable to utilize hanging baskets than to support pendulous growth with a trellis.
- to plant new cuttings during the warm weather, to allow new growth to become established during the growing season.
- to remember to water hybrids during the hot summer months, and remember an occasional spraying or misting of your plants is very beneficial. DO NOT allow soil to completely dry out.
- to maintain plants in their proper environment, such as a lath-house, under shade cloth, or suspended from the branches of a tree, and avoid direct exposure to the hot summer sun.
- to learn and benefit from mistakes in the past year, and to look forward to a more productive blooming season in the next.



arboretum (arbor-EE-tum). A place where trees and shrubs are cultivated for scientific or educational purposes.

USE OF DETERGENTS IN PLANT CARE

...Dick Chadwick

When fertilizing or leaf feeding your plants, try adding one tablespoon of detergent to a gallon of the diluted fertilizer. It will help the plant absorb the fertilizer. It makes water "wetter", penetrating the soil. Also, it is recommended by "Watch Us Grow" especially for plants with a wax-like coating such as cabbage. This would especially apply to epiphyllums with their waxy coat.

Any detergent can be used but Shaklee's "Basic H" was recommended by Watch Us Grow, though 409 is just as good (Trisodium Phosphate).

One tablespoon of Basic H or other detergent in a gallon of water can be used to wash off the leaves of the Epi's, or to soak the root ball if it becomes dry. By using Basic H or 409, you would not have to rinse the leaves afterward.

Insect Spray - one tablespoon of Basic H to a gallon of diluted spray helps penetrate the protective coating of many of the insects. READ THE DIRECTIONS ON THE INSECTICIDE FIRST.

Powdery Mildew - one tablespoon of Basic H to a gallon of your fungicide spray will help wet (penetrate) the mildew and destroy it.



(Corrected from May issue..)

NAME TAGS

Jeannie Burger will take your order for a SDES nametag (blue plastic with a pin-back). They are \$2.65 including tax. Call Jeannie, 280-6747.



Sorry...

Cuttings from Sam Markey marked "ARABY" are not; correct name of cuttings to "SESAME". Mr. Markey regrets...

CLASSIFIEDS

RAINBOW GARDENS NURSERY & BOOKSHOP - So sorry we couldn't make it to this year's show, but business kept us from coming. We want to thank the enormous amount of people who stopped in to see us while enroute to the Los Angeles Epi Flower Show. We couldn't have been more delighted! We hope you were, too. Although we won't be committed to being open at any certain time, we'll usually be here for the entire month of June if you want to call and make arrangements to stop by. Our color catalogs are \$1.00, should you care to send for one. Bookshop catalogs sent free upon request. RAINBOW GARDENS, P. O. Box 721 (1574 Dorothea Rd.,) La Habra, California 90631.



CALIFORNIA EPI CENTER will be open without appointment Saturdays only 10 AM to 5 PM during the May and June blooming season. Open other days of the week and throughout the rest of the year by appointment only. Full color catalog \$1.00 (deductible). California Epi Center, 1444 E. Taylor St., Vista, California 92083. Phone: (619) 758-4290



Due to the recent illness of Bill Nelson, Bill and Ruth are selling their plant collection, including succulents and cactus. Please call Ruth for an appointment, 298-3349.



from Bob and Shala McNeil:

"The hills above Ramona are too cold. We are ready to sell most of our collection". Please call us (619) 789-2489



June 25, 26, Sat. & Sun. 10 AM-5 PM

Valerie Ann Bailey and friend are having a studio craft sale at her home in Poway. SDES members, families and friends are invited.

13911 York St., Poway

There will be hand thrown pottery, some small cactus, succulents and some epis (Valerie will also be showing her jewelry). She will try to have invitations and maps at the June meeting, but if not call her at 271-9592 or 748-3497 for directions.



June 4, 5 S.D. Cactus & Succulent Show
Casa del Prado
Sat. 1pm-5pm Sun. 10am-5pm Free

June 18, 19 S.D. Fuchsia &
Shade Plant Show
Casa del Prado

Sat. 10am-5pm Free
Sun. 10am-5pm -

