

Epi News

San Diego Epiphyllum Society, Inc.

PUBLISHED BY THE SAN DIEGO EPIPHYLLUM SOCIETY

VOLUME 8, NO. 3
March 14, 1984

MEETING: 2nd Wednesday 7:30 PM, Room 101 Casa del Prado, Balboa Park

PRESIDENT: Elinor Latimer (619) 697-4100

CORRESPONDING Debbie Capp (619) 469-4784

SECRETARY: 4132 Charles St., La Mesa, California 92041

SEND ALL NEWS ITEMS TO EPI NEWS EDITOR:

Pat Stebbins (619) 279-8026

10404 Orozco Rd., San Diego, California 92124

MEMBERSHIP: Marian Foster (619) 266-0355

6590 Springfield St., San Diego, CA 92114

DEADLINE FOR NEXT ISSUE:

Fri. MARCH 30



Check or money order payable to San Diego Epiphyllum Society, MEMBERSHIP DUES FOR ONE YEAR \$6.00 SINGLE or FAMILY MEMBERSHIP (MEMBER/SPOUSE only) U.S.A., \$12.00 INTERNATIONAL (Note: number in parentheses on mailing label indicates dues month. Please check and keep current.)

NOMINATIONS FOR NEXT TERM'S OFFICERS WILL BE IN APRIL - IF YOU KNOW YOU WILL NOT BE ABLE TO ATTEND THE MAY MEETING TO VOTE, PLEASE CONTACT RECORDING SECRETARY MARGARET PETHLEY AND SHE WILL SEND YOU AN ABSENTEE BALLOT TO MAIL IN:

Margaret Pethley (619) 461-8607
5753 Jeanette Ave.
La Mesa, CA 92041

ANNUAL BUS TOUR, SUNDAY MAY 20

Got any ideas on where you'd like to go on the bus tour this year? Please contact Ed Broz, tour chairman, he's putting it all together now. Call Ed, 465-1721, or see him at the meeting.

GENERAL MEETING, MARCH 14

The program for the March meeting had not been finalized by the Epi News deadline date - so come on out anyway and be surprised! It's sure to be a good one - as always!

MARCH REFRESHMENTS

...Penny Bunker

Thanks to all that bring goodies, and are so helpful to our society. That is why we are known as the society that has so much fun and a "party" every meeting.

Those who have signed for March:

Lorna Barrows	Jean Gray
Maria Barrett	Marcia Hultgren
Elinor Berry	Beatrice Nava
Mary Alice Buaas	Chris Sanchez
Michele Davis	Jean Seile

OPEN GARDENS

...Jack Stafford

Now is the time to start planning your open house "Garden Tour".

Call Jack Stafford, 691-8363.

Open gardens will be published in the Epi News.

Last year we had four - let's have 40 this year!

FEBRUARY MEETING

...Kathie Van Arum

The February meeting was attended by 96 members and 6 guests. Those in attendance enjoyed a very interesting program by member Greg Balvin, Chairman of the Search and Research Committee. We saw pictures of Mr. Daley's hybrids and others that were hybridized many years ago. The Nominating Committee was chosen. George Jennings and Elizabeth Glover

3/14/84

had been chosen by the board of directors and Mike Shepley, George Plaisted and Elsie Tremblay were elected from the general membership. George Jennings, Chairman, asked that anyone wishing to serve please call him at 287-3007. Don't be shy.

As usual there were so many goodies for us to enjoy, which we all did with gusto. There was a fine collection of cuttings on the cutting table, manned by Gus Schlapfer in the absence of Ernest Angus.



He who Smiles rather than
Rages
Is always the Stronger.

... Japanese Wisdom



WRESSY COCKE

I received a nice note from Wressy Cocke, and a list of 35 Epis that have bloomed for him since last Sept. The list is too long to publish this month but Helen Barkdoll will have it if you'd like to look at it, and she will keep it for future reference.

Wressy writes "I miss coming down to the Epi meeting, but it is too much of a drive home".

"I will have a lot of blooms in the next three months. I would like to send an invitation to the members of the society to come up and see them. Just call (213) 375-5086 before they come." (*Ridondo Beach*)

He also says besides the named varieties (on the list) he had a lot of unnamed ones bloom: 42 in Oct., 35 in Nov., 35 in Dec., 28 in Jan., and 21 in Feb. Look at all the possible new Wressy Cocke hybrids we have to look forward to!



CUTTINGS FOR THE MAY SHOW

Dick Chadwick says it's not too early to take cuttings to bring for the cutting sale at our May show.

Take good, strong cuttings, lay them out flat, not touching each other and not in the sun or where they can get wet.



INCORPORATION OF THE SDES

...Elinor Latimer

The incorporation of this society took place in September of 1980 but nothing was done about it until July 1983. We are incorporated and there are advantages to each member of this society. The main advantage is that if the society were sued, each member is protected from being liable. As it now stands, anyone who sues the society only has access to the assets of the society. Previous to the incorporation, all members of the society were personally liable for any possible injury at any of our activities. (One member did fall at one of our shows, but he is not the sort of person to take advantage of our society members.)

We have not received our non-profit status from the IRS, but we have from the California State Franchise Board. Therefore, no contributions to the society have been or will be deductible until the non-profit status has been granted. When we do finally hear from the IRS, and our Treasurer wrote them in November, we will be eligible for a mailing permit from the Post Office. This would greatly reduce the amount that we spend on mailing the Epi News.



EDUCATION

...Helen Barkdoll

The winter that wasn't - 1984. With all this warm weather we are having, our Epis are all budding out. Perhaps it is providential. Last year was late formation of buds and by the time we had our Mother's Day Show only a portion of the usual number of flowers was available. As a result, we had a very fine show displaying individual flowers to perfection. Perhaps this year will be one for mass blooming. In any event, start planning now for the social event of the year, our May 13, 1984 show in Balboa Park.

Some of the smaller flowered Epis are now blooming in their regular spring blooming season. We also have some of the larger flowers at this time. George French has developed some exquisite large

3/14/84

flowered epis that will bloom this time of year. San Diego is surely fortunate to have George develop hybrids that do so well here (and anywhere else).

This months bloomers are:

Ackermanii, Ballarat, Bridal Showers, Chimu, Confetti, Crimson Arrow, Ernst Grundchon, George's Favorite, Harold Knebel, Hero, Lemon Custard, Litega, Mary Kay, Michel T, Piland's Pride, Pink Glow, Prof. Irwin, Sassy Pink, Snowflake, Tiny Jill, Vista Star, Wedding Bells, and 5119.

The list should be getting longer and longer, so please remember to write down your blooms on the March list at the Library table.



SEARCH AND RESEARCH COMMITTEE

...Greg Balvin

As with all things, there must be a break in the action and last month it was for me. The following might explain what I mean. First let me tell you that it was our pleasure to meet with two virtually forgotten people from the Golden Days of Epis. One bright Saturday came and went. But during that time we had the pleasure of meeting Mr. Avery O. Fuller of Gardena, hybridizer of such beauties as OPENING NIGHT, CHATELAINE, PEACH PARFAIT, DAINTY DEW DROPS, among others. Mr. Fuller, 76, just recovering from minor surgery, allowed Bev Garber and me to view his plants, and we spent about two hours looking and talking. Mr. Fuller is still gainfully employed four days a week at Palos Verdes Begonia Farms, working with exotic plants, and some of his plants are available during blooming season, there. A very nice gentleman, and a friend of the following grower.

This next person I'd like for every new member to meet, because her tremendous enthusiasm for the epi is still there. At 87 years young, she still can't think of a lovelier flower than the epiphyllum. (According to her, not even orchids are as lovely, and you know I'd have to agree.) Her name: Mrs. Pete Axcell, lovingly known as Gladys to all her many friends. We spent three hours

with her and her daughter, Tookie, where she has lived for about a year since a bout with heart conditions forced her to give up most of her collection and her house. We had a marvelous time, and we were treated to recollections of some of the many personalities that she has know over the years. It really was most enjoyable and we hope to see her again soon. She is the daughter of Oklahoma pioneers, and she credits her longevity to her ability to work with her plants and to a great religious faith. I only hope that I have such a wonderful outlook on life when I hit 87. Anyone truly interested in meeting either Mr. Fuller or Mrs. Axcell, please contact me. I'm sure they'd like to meet you too.

On to Society business for the moment. The Board of Directors appointed a Committee of Five to look into the possibility of contributing to a permanent exhibit of Epiphyllums at the San Diego Zoo, in Fern Canyon. Full credit must be given to the Wild Animal Park for establishing a collection the size of which most private collectors could not attain. On the other hand, the exhibit at the Zoo would be on a much smaller scale primarily educational in nature, with graphics to explain about the Epiphyllum species and their jungle habitat. The advantage of education cannot be over-emphasized and the area envisioned by the horticulturist is an area easily accessible to the general public. No plans have come to the fore as yet, we hope to have more concrete plans in the near future. We are interested in the member's opinions, so if you have some input contact me, Rick Latimer, Helen Barkdoll, or Debbie Capp.

On to the business of the Research Committee! We still meet the third Monday of every month in Room 104 at 7:30 PM. There are some truly exciting things happening, a lot of plants are being rediscovered, a lot of information is being chronicled. After last month's lapse, we are again listing 20 more plants that are considered to be lost; we hope you, the members, will be able to help us locate these varieties,

3/14/84

or any information you can help us with. Anyway, here is the list:

- | | |
|--------------|---------------|
| ANNA HITLER | APPLE BLOSSOM |
| ANNETTE | APRICOT PINK |
| ANNIE LAURIE | APRIL DAWN |
| ANTARES | APSAM |
| ANTIGONE | APYACO |
| ANTOINETTE | ARABESQUE |
| ANZAC | ARABIA |
| APHRODITE | ARCTURAS |
| APPARITION | ARGENT |
| APPLAUSE | ARIADNE |

And the list goes on... More to come next month. As a finale to this article, I'd like to re-stress the importance of educational material. The book committee will be performing a magnificent job when the new Epiphyllum Book is published. The need for such a work has never been more evident, and the public will be eternally grateful for the many long hours put in by all the writers-contributors. Mr. Scott Haselton and the E.S.A. have graciously allowed us the right to any material included in the "Epiphyllum Handbook", first published some 20 plus years ago. Hopefully, this new effort will be as big a success, and will update all the advances made since Mr. Haselton's book was first published. I hope that the membership is as excited about the coming event as I am. Well, enough wordiness for now. See you on these pages again next month!



MEMBER PROFILE SERIES

...Pat Stebbins

HILARY HEINTZ

One of our talented out-of-state members is Hilary Ann Heintz of North Canton, Ohio. Hilary has been growing Epis for eight years and she has kindly sent us a glimpse of her joys and trials of growing epiphyllums in a cold climate.

"This is Hilary Heintz reporting live from Ohio.

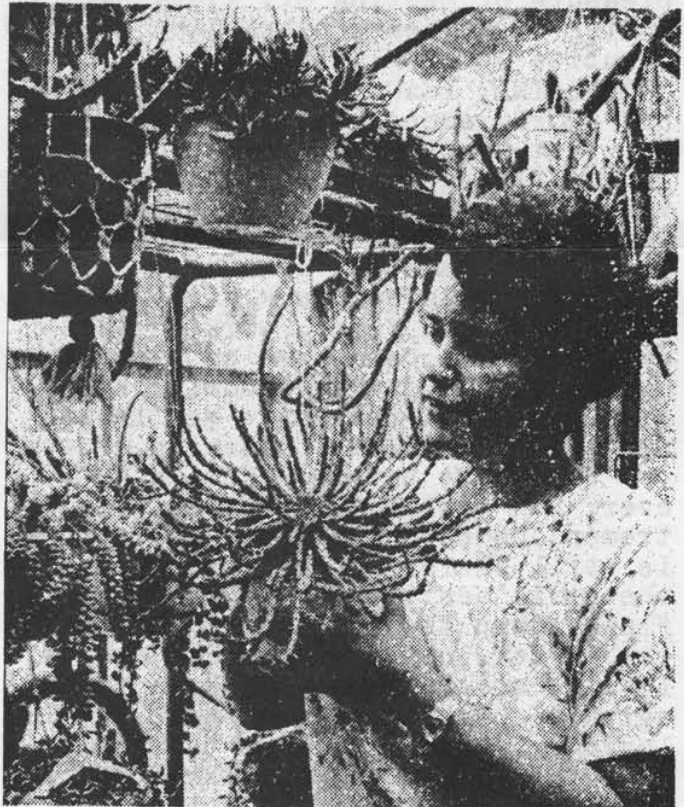
Cacti have been a part of my life since I was twelve years old, but it wasn't until I was 32 that I bought my first Epiphyllum. It was Epi. oxypetalum and I found it quite by

accident on a trip through Pennsylvania. That was eight years ago and since then many more have been added to my collection.

My Epis number only about 20 now, my problem being space. They grow so fast that before I know it they're monsters. So I've whittled my collection down to a manageable size of plants with just the flowers I like. Some are Padre, King Midas, Pete's Snowflake, Bertee and Mystic Mood.

The weather in Ohio can make growing sun-loving plants a problem. They have something here called lake-effect. This refers to the effect Lake Erie has on our weather. Water from the lake evaporates and is blown over Ohio by the winds of Canada. This causes a lot of cloudiness in the summer and almost constant grey weather in the winter. I must say that this past summer was exceptional in that it was sunny most of the time with few rainy days. Needless to say if I had a choice, I'd grow my plants in a sunnier place, but I'm here so let's make the best of it!

After some experimentation I've found a potting mix that works - for my Epis as well as all my other succulents.



Hilary Heintz

3/14/84

It's called Metro Mix 500. It also comes in other mixes like 220, 300 and 350 but they are not recommended for long term growing. Metro Mix is a product of Grace, Inc. the Terra Lite and Peters Plant Food people. The 500 mix contains sphagnum peat moss, vermiculite, granite sand, processed bark, composted pine bark and a nutrient charge. To this I add bone meal and this seems to please all my succulents and terrestrial cacti just fine. I also use this mix for my Cymbidium Orchids. But for my Epis who like a more constantly moist mix I add fine grade Orchid Bark. The added bark increases drainage and at the same time keeps the entire mix more evenly moist.

I grow all my plants in my tiny seven by nine foot greenhouse which is attached to the south side of our breezeway along the garage wall. The east wall of the greenhouse is actually the west wall of the garage. Our house and garage are brick so this wall was always too damp for any of my cacti, even my Epis and Selenicereus. So I tried a few orchids and they loved it! Besides Cymbidiums I have a few Cattleyas, Dendrobiums, Anguloas and a Lycaste. Who says you can't grow cacti and orchids in the same house?

At this time of year most of the plants are dormant, including the Epis. So starting in November and continuing through January the Epis are sprayed but not watered. In February, when the flower buds begin to appear, I start my feeding schedule.

I use Peters' 10-30-20 at one half strength for the first three feedings and Fish Emulsion (also half strength) for the fourth. Plants are fed every time they are watered until they've finished blooming. By mid April I move the Epis and Orchids to the patio where I put up my temporary lathhouse. They can't summer in the greenhouse because the temperature goes over 100° and you know what the Epis think of that.

I drape plastic sheeting over the lathhouse to protect the plants at night until the end of May.

The plants are sprayed every day during the summer in the morning and

also midday if necessary. They are watered but not fertilized for one month after flowering is finished. After this month I resume my feeding schedule, until in mid-August the plants are brought back into the greenhouse. By the end of September feeding is ended and the plants receive only plain water through October.

My growing routine may seem odd to those of you who live in Southern California but it seems to work here."

As you can see, Hilary has wisely limited her collection to what she considers a manageable amount. Can you imagine moving 100 or 300 plants from one place to another twice a year?

Thank you Hilary, for letting us share.



EPIPHYLLUM CULTURE FOR THE
MONTHS OF MARCH, APRIL

...Pat Stebbins

By now you can tell for sure the wonderful blooming season ahead for us. My CHERRY FIZZ is going to be spectacular! I think this is going to be one of our best blooming seasons due to our warm winter.

You can give your Epis one more 0-nitrogen feeding and just stand back!

In addition to the regular maintenance routine of keeping debris from collecting in your containers, and removing dead growth, particular attention should now be given to insect control. With the warm temperatures come the ants and aphids, so beware!

...and of course the ever popular BAIT FOR SNAILS AND SLUGS ON A ROUTINE BASIS ALL YEAR!



Seek on high bare trails
Sky-reflecting
Violets...
Mountain-top jewels

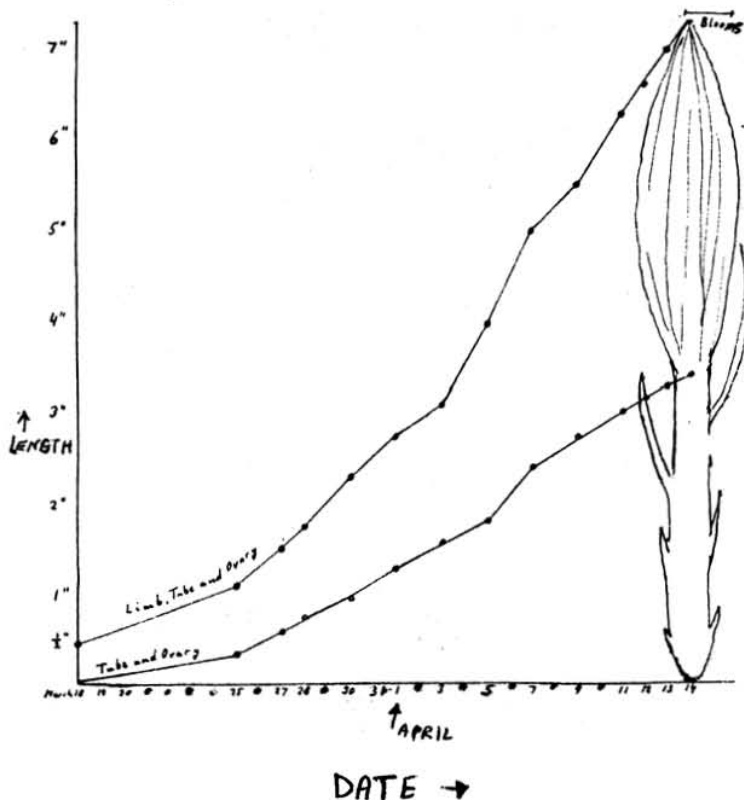
Basho

3/14/84

MONITORING THE GROWTH RATE OF EPI-PHYLLUM BUDS

...Rick Latimer

With the blooming season soon to be on us, some of us might be interested to monitor the different growth rates of the buds of different Epi hybrids. Below are the recorded results taken by Dr. Edward C. Roosen-Runge in 1946. What we would expect is a smooth curve. However, we notice that the 5th of April is lower than expected, and that April 7th is higher than expected. The earlier date was probably cooler than normal, and the later day might have been warmer than normal.



It will be interesting to compare notes after this blooming season and later after other blooming seasons. Also, we should monitor off-season buds and later-in-the-season buds.

REFS: Dr. Edward C. Roosen-Runge, "Observations on the Orchid Cactus 'Eden'", Cactus and Succulent Society of America's Journal (18:8) 8/46, p. 124.



SOME UP-COMING SAN DIEGO GARDENING EVENTS:

- Mar. 17, 18 IKEBANA INTN'L EXHIBIT SHOW, Casa del Prado, Balboa Park Sat. & Sun. 11 AM-4:30 PM
- Mar. 24, 25 S.D. CO. ORCHID SHOW (Al Bahr Temple, Hghw. 163 & Clairemont Mesa Dr.) Adm. \$1.50 Sat. 10 AM-10 PM, Sun. 10 AM-5 PM
- Mar. 24, 25 S.D. & PALOMAR CHPTRS. OF CACTUS & SUCCULENT SOCIETY "Green Thumb Show", WILD ANIMAL PARK Sat. & Sun. 9 AM-5 PM, Free with Park Admission
- Mar. 31, Apr. 1 BALBOA PARK AFRICAN VIOLET SHOW, Casa del Prado Sat. 1 PM-5 PM, Sun. 10 AM-4 PM
- Apr. 7, 8 CALIF. NATIVE PLANT SOCIETY & S.D. GERANIUM SOCIETY "Green Thumb Show", WILD ANIMAL PARK Sat. & Sun. 9 AM-5 PM, Free with Park Admission
- Apr. 14, 15 RANCHO SANTA FE GARDEN CLUB FLOWER SHOW & PLANT SALE. Avenida - Acacias & Granada, Village Ctr, Rancho Santa Fe Sat. 1 PM-5 PM, Sun. 10 AM-5 PM, Free
- Apr. 14, Sat. 8 AM-Noon SEA WORLD, Adult Seminar "The Greener Side of Sea World: Cont'l Brkfast & Botanical Tour of park, for fee info. & reservs. Call Sea World (619) 222-6363, ext. 2452

CLASSIFIEDS



What would you be willing to pay for a publication containing hundreds of color photos of epiphyllums, rhipsalis, rattail cacti and other plants? \$5.00? Believe it or not that's all you'll pay (including postage) for our special offer of seven color catalogs... #3 thru #9 covering years 1978-1984. Individual back issues are \$1.00 each. Send check with order, please. As usual, we'll be open by appointment... just call and if we're here, you're welcome to come by. We have thousands of potted cuttings, a good selection of plants that are not featured in our 1984 catalog, and an expanded selection of hanging baskets. CALIFORNIA EPI CENTER, P.O. Box 1431, 1444 E. Taylor St., Vista, CA 92083. Phone (619) 758-4290.

NAME TAGS

Jeannie Burger will take your order for a SDES nametag (blue plastic with a pin-back). They are \$2.65 including tax. Call Jeannie, 280-6747.

SAN DIEGO EPIPHYLLUM SOCIETY MOTHER'S DAY SHOW & CUTTING SALE, MAY 13, 1984

FLOWER SHOW EXHIBITOR GUIDELINES

All tables must be reserved prior to May 1, 1984 with the Chairman.

All exhibits are to be set up on Saturday night except for your flowers. The earlier we set up on Saturday the sooner we can leave. The hall will be open Saturday at 5:30 PM.

All flowers are to be named and labeled. Exhibitors are urged to follow the show theme "California Odyssey for 1984".

On Sunday morning all exhibits are to be completed by 9:45 AM for judging and all boxes, etc., must be removed from hall and floor must be swept. Anyone having 6 or less flowers may bring them in before 9 AM. The hall will be open at 7 AM.

After the show is over will all exhibitors please assist in cleaning up. All table covers must be wiped clean and dried before they can be rolled for storage. Please bring a sponge or cloth with you to wipe the cover you use. Please, everyone pitch in because we are all going to be tired. Also, please bring your own watering can.

Please do not tie up the cart in setting up or taking down your table display. There are only (3) carts and we must all use them.

Placement of tables will be at the discretion of the Chairman, and the FIRE DEPARTMENT. Every effort will be made to accomodate everyone.

NO-NO'S

No spraying (spray cans, etc.) in the Park at all, by Park rules. Also, no moss in trash cans. No sand or similar material is allowed on table covers. If you plan to use sand, please bring your own heavy table cover. Please be sure that there is no water on the floor. If exhibit is to set on the floor, the floor must be covered.

Coffee and punch will be available all day for exhibitors. Donuts will be available after 8 AM Sunday.

There will be NO potluck this year. Bring your own picnic lunch or plan to get "fast food" near the zoo, or to eat at the Cafe del Rey Moro.

APPLICATION FOR SHOW TABLE

I would like _____ half table or _____ table(s). (Check one.)

Please sign and return to the chairman starting the 1st of March, and before the 1st of May.

Exhibitor (signed)

Thank you,
Kathie Van Arum, Chairman (477-5258)