

Epi News

March 12, 1986

Vol. 10, No. 3

San Diego Epiphyllum Society, Inc.

SDES GETS P.O. BOX

The SDES Board of Directors decided at their January meeting to establish a permanent mailing address.

The Board has authorized the rental of a post office box at the downtown San Diego post office.

It is hoped that a single mailing address will enable the society to answer its mail in a more efficient manner.

THE NEW ADDRESS IS:

SDES
P.O.Box 126127
San Diego, CA 92112-6127

All mail to SDES should go to this post office box except Epi News materials which should go to the editor to avoid deadline problems.

WORK PARTY PLANNED

It's spring cleaning time at the Epi House at the Wild Animal Park, according to SDES/WAP representative Dick Chadwick.

Dick has announced a work party for Saturday, March 15th. Those interested should see Dick at the March 12th meeting.

The group will meet at the Epi House at 9:00 A.M.

EPI SHOW IS TOPIC AT MARCH 12th MEETING

The March General Meeting will feature a program with Mother's Day in mind.

Program V.P. Rick Latimer advises that there will be three sections to the program, each designed to make this years show one that will be long remembered.

Nate Ogdon will demonstrate how to take cuttings and prune epiphyllums.

Rick will show slides of past shows going "way back to the early years". Rick will also demonstrate how easy it is to set up full and partial table top displays with props and flowers.

The final segment will be a question and answer period that will include show Chair Kathie vanArum.

If you have not yet decided on your display the March meeting should give you plenty of ideas. See you there.

WELCOME NEW MEMBERS

W.L. Mather, Scarborough,
Ont., Canada

Edna M. Wilcox, Story, WY

Tineke Wilders, San Diego

AT THE FEBRUARY MEETING

As we were threatened with a storm, not as many members were there as usual. The 79 who did attend had a most interesting trip through the strange Okefenokee swamp in Georgia.

The scenery was very lush with many strange trees along the edge of the swamp lands.

Milt Turner was our guide on the tour and I must comment that his photography was just about the best we have seen in a long time.

We followed Milt and his group on their 40 mile canoe trip and saw a large number of close-up shots of the local alligators. The rest stations where they camped out were up on platforms near the river.

It looked very interesting, but scary!

Don't forget to send in your reservations for your table at the Mothers Day Show. Time's a wasting. Only two meetings before the big event.

-Gene Schmedding

DEADLINE
FOR APRIL
ISSUE
IS MARCH 27

EPI NEWS
is published monthly by:
San Diego Epiphyllum
Society, Inc.

P.O. 126127
San Diego, CA 92112-6127

Society Officers

President:

Ron Miller (746-9620)

Vice President (Programs):

Rick Latimer (697-4100)

Vice President (Membership):

Jeannie Burger (287-9193)

Treasurer:

George Plaisted (583-9551)

Recording Secretary:

Debbie Capp (469-4784)

Corresponding Secretary:

Gene Schmedding (421-6510)

Immediate Past-President:

Gene Lund (469-1677)

MEMBERS ON BAJA EXPEDITION

Three members of SDES are part of 10 person expedition to Baja California, according to Jim Gibbons, Horticulturist at the San Diego Wild Animal Park.

President Ron Miller, his wife Joan and Vice President Rick Latimer will join Frank Thrombley and Tom Parks of the San Diego Cactus and Succulent Society and others on the search for *Cochemiea Setispina* a small cylindrical cactus reported to be found in the area near San Borja.

The group is scheduled to depart March 7th and return March 11th.

MARCH REFRESHMENTS

We have a full group this month, thank you all.

Catherine Burger
Dick Chadwick
J.R. DuBois
Curt Hammel
Sam Markey
Sean Minogue
Jan Rice
Jean Seile
Nita Stroberger
John Trimpi

-Penny Bunker

PLOCK WILL SERVE

Richard Plock has been named to fill a vacancy on the SDES Board of Directors. Richard will replace Louise Newman whose resignation was accepted with regrets at the January Board meeting.

Richard's term will end this December.

BOTANICAL EVENTS FOR MARCH

March 12,19,26
Contemp. American Flower
Arranging Classes with
Adrienne Green.CdP-101*
298-5182 for information

March 15 & 16
18th Annual Festival of
Ikebana and Japanese Art.
"Spring Flowers-Haru No Hana"
Displays, tea ceremonies,
demonstrations.
11am-4:30pm, CdP-101

March 22 & 23
Exotic Plant Society's 8th
Annual Show.
10am-4pm, FREE, CdP-101

EPI SOCIETY JOINS SHOW AT DEL MAR

The SDES Board of Directors has decided to participate in the First Annual Spring Garden Show at the Del Mar Fairgrounds, Pat O'Brien Pavilion, April 18, 19 and 20th.

The event is being presented by San Diego Home and Garden magazine.

Participation in the show will include floral display and cutting sales.

President Ron Miller is looking for a society member able to coordinate the event. Call him if you are able to serve, 746-9620

March 22 & 23
La Jolla Village Club
Flower Show
"Impressions of Spring"
Rec. Center
615 Prospect St., La Jolla
Sat. 1-5pm, Sun. 12-4pm

March 25
Walking Tour of S.D. Main
Library.Includes rare book
and horticultural sections.
Call Bobbie Bootman for
reservations 222-2806 FREE

April 6
Convair Garden Club 36th
Annual Rose Show.
FREE, 1-4:30pm, CdP-101

April 12 & 13
San Diego Rose Society 59th
Annual Show, "Through the
Years".
Sat. 2-6pm, Sun. 10-5:30
Balboa Park Club
Admission: \$1.00

-Elizabeth Glover

* CdP-101 (Casa del Prado,
Room #101, The Majorca Room
Balboa Park)

3/12/86

A QUAIL IS CALLING

Richard Haubrich, President of Quail Botanical Garden Foundation, faced a number of issues and recommendations at the February Board of Trustees meeting.

Treasurer, Jack Fields, reported a cash balance of approximately \$171,500.00. An accurate figure was not available at the time.

A number of recommendations were read for approval which included an additional \$1,000.00 to be added to the purchase fund for a quantity of variegated Bamboo from Japan. Some of the funds for this purchase have been given by the Bamboo Society.

An appropriation of \$6,500.00 was approved to purchase a computer with software that would give the Botanical Garden the capability of cataloging all of the plants now at Quail Garden. An additional \$2,000.00 was added to the Student Intern budget as well as \$5,425.00 to proceed with a study and rendering for Phase II of the Waterfall project.

A proposal calling for the purchase of a copy machine in the amount of \$1,000.00 was tabled and Bill Bowman, Jack Fields and Milt Turner were asked to form a committee to research this need.

Paul Eckert, Chairman of the County Board of Supervisors, will be the speaker at the dedication ceremony for the new Visitors Center on Saturday, March 8, 1986 at 10:00am. The center will be known as the Marilyn Lane Visitors Center.

NOW IS THE TIME

- to maintain good grooming by removal of dead spindly and unsightly branches from your plants.

-to remove dead leaves and debris from containers eliminating a haven for harmful pests and allowing a free flow of oxygen to the soil and root system.

-to remove scale residue clinging to the outside of containers.

-to give mature plants a final feeding of Nitrogen-free liquid fertilizer such as Hi-Bloom or Bloom-Builder to promote healthy buds and blooms.

-to utilize control methods to inhibit aphids and ants (who are attracted by the nectar) from attacking the blooms. Insecticides such as Orthene and Malathion can be used. READ AND FOLLOW DIRECTIONS ON LABEL CAREFULLY.

-to remember not to relocate plants once buds have begun to form.

-to bait for snails. They become more active in wet weather.

-to repot last years cuttings which have outgrown their present containers.

-to gather and store rain-water for future use. If possible use covered opaque containers to avoid infestations of larvae and build-up of algae.

-Frank Granatowski

CLASSIFIEDS

FULL COLOR "Flowering Jungle Cacti" catalog \$1.00 (deductible). Hundreds of Epiphyllums, Christmas/Easter/Rattail cacti, night blooming cacti, hoyas, haworthias. SDES members will also receive our 1986 "Unrooted Cuttings" list of 70 additional epis. The following 1986 lists are available FREE...send long stamped envelope...A)1986 Catalog Supplement-21 color photos, 64 plants. B) Rhipsalis List-over 70 species 33 illustrations. C) Serious Collector List- 28 true epiphytic cactus species for the advanced collector. D) Haworthia List-over 100 species. During April, May and June (starting April 5th) the nursery will be open Saturdays only 10:00-5:00. If Saturday is not convenient, the nursery is open at other times by "appointment". Please call. If we're here, you're welcome to come by. All of the plants mentioned above are available, and we have a large selection of epi baskets... 2 young plants to the pot... at very reasonable prices... most under \$10.00. California Epi Center, Box 1431-SDES, 1444 E. Taylor St., Vista, CA 92083. (619) 758-4290

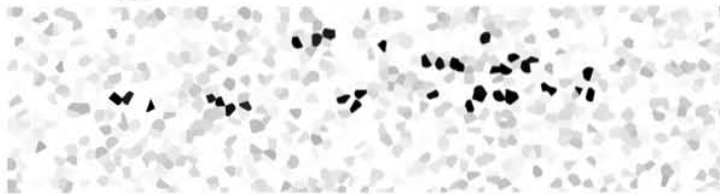
WANTED TO BUY

Cutting of Monvillea Cavendishii
Contact Bob Griffin 698-6963
5 p.m. - 10 p.m.

SEND NEWS ITEMS TO:

Sean Minogue
808 Ethel Place
National City, CA 92050
(619) 475-4478

-Milton D. Turner



SAN DIEGO, CA 92112-6127

P.O. 126127

S.D.E.S. - EPI NEWS



MEMBERSHIP INFORMATION

The San Diego Epiphyllum Society, Inc. is open to all persons interested in the growing, display and collecting Epiphyllum and its related species.

Meetings are held on the second Wednesday of each month:

7:30 P.M.
Room #101, The Majorca Room
Casa del Prado, Balboa Park

Guests are welcome to attend all regular meetings.

deadline for
April issue is
March 27th

MEMBERSHIP DUES

Dues in the SDES are \$6.00 (\$12.00 foreign) per year for each individual or married couple. Please send checks, payable to San Diego Epiphyllum Society, Inc. to:

SDES-Membership
P.O. 126127
San Diego, CA 92112-6127

