

EPI NEWS

JULY 9, 1986

Vol. 10, No. 7

The monthly publication of

SAN DIEGO EPIPHYLLUM SOCIETY, INC.

AT THE JUNE MEETING

Our June meeting was more a "Maxi" than a "Mini" flower show. George French had quite a display, so did Nate Ogdon from his famous "Honey-Do" Ranch.

Of course there were many other contributors.

George and Nate were joined by Milt Turner for a very enjoyable flower talk.

Our guest speaker was a fairly new member, garden writer Tineke Wilders. Tineke was born and raised in Holland, then moved to Canada and now to San Diego.

Tineke gave a very interesting slide program with running commentary showing botanical gardens all over the east and mid-west.

Trophies were awarded to Dan Broz, Phyllis Flechsig and Harry and Margaret Blake for their achievements at the Mothers Day Show.

There were hundreds of free cuttings at the meeting as this was "freebe" night. Gus and Marge Schlapfer brought a whole

cont, on page 2

ELECTION PROCESS TO BEGIN

Recent changes to SDES by-laws moved the election of SDES officers and Board of Director members to the November General Meeting. This means that August will be the month to select a nominating committee.

Members interested in serving on this committee should contact any board member or elected officer and offer their services.

Nominations also are taken from the floor at the October General Meeting.

PANEL OF EXPERTS AT JULY 9th MEETING

The July 9th General Meeting will have a lot of information for serious epi lovers.

Rather than a slide program, the July meeting will feature a panel of experts.

Program Vice President Rick Latimer has announced that Ron Miller, Gladys Harper, Helen Barkdoll and Ernest Angus will discuss such topics as potting mixes and general epi culture. A question and answer forum also will take place.

Be sure to bring a pen and pad of paper to this special event.

UNTHANKED TO BE RECOGNIZED

We often hear of SDES members doing "Thankless" jobs. Many serve month after month or are seen at every activity pitching in and getting their jobs done. If you know of someone worthy of praise send your thoughts and the specifics of that member's activities to Epi News for the new "Member of the Month" column (limit of 100 words please).

SEND NOMINEES TO:
EPI NEWS
c/o Sean Minogue
808 Ethel Place
Nations! City, CA 92050

JULY GOODIES

Thanks to all who step in and bring goodies when the list is short. Last time we almost ran out even though I used some from other days. We have a full list for July, thanks to those who signed up.

Pat Barrett
Carolyn Bassett
Catherine Burger
Ruth Carlen
Elizabeth Glover
Muriel Ingam
Margaret Pethley
Gus Schlapfer
Bernadine Southard
Kathie vanArum

Penny Bunker

EPI NEWS
is published monthly by:
San Diego Epiphyllum
Society, Inc.

P.O. 126127
San Diego, CA 92112-6127

Society Officers

President:
Ron Miller (746-9620)

Vice President (Programs):
Rick Latimer (697-4100)

Vice President (Membership):
Jeannie Burger (287-9193)

Treasurer:
George Plaisted (583-9551)

Recording Secretary:
Debbie Capp (469-4784)

Corresponding Secretary:
Gene Schmedding (421-6510)

Immediate Past-President:
Gene Lund (469-1677)

MORE THANKS
TO MEMBERS

Dear Members;

In my "Thank you" last month there were three members I failed to thank.

George Jennings and Elmer and Marian Foster opened their gardens for the ESA bus tour to our Mothers Day Show. The ESA members so enjoyed both of these gardens and I thank George, Marian and Elmer for making their gardens available.

I do hope they will accept my apology for the oversight.

Sincerely
Kathie vanArum
Show Chairman

NEWMAN
ON THE MEND

Louise Newman is out of the hospital and on the mend after taking a bad fall in June.

Members learned of the accident at the June General Meeting. Louise fell from a ladder while watering her epis.

Charlie Coons has lowered Louises' epis to cut down on her ladder climbing.

Best wishes to Louise as she continues to get well and thanks to Charlie for helping to keep Louise on solid ground.

CLARIFICATION

In the "Best of Exhibit" list published in the last EPI NEWS the following members were omitted.

Ben and Jean Seile for their Bollman.

California Epi Center for their Curtain Call.

Also Andy and Thelma Capp were credited for a beautiful Childhood blossom that was in fact grown by Debbie Capp.

WELCOME
NEW MEMBERS

Donna Couchman
San Diego

Jeanette Dutton
San Diego

Karen Evans
San Diego

Joseph and Lucille Minogue
Chula Vista

SDWAP
WORK PARTY
ANNOUNCED

Mark your calendars for July 19th (Sat.). This is the date that we will start to install the new misting system in the SDWAP Epi House. Volunteers are needed to assemble the pipes and sprinklers. Dick Chadwick will have a sign-up sheet at the July 9th General Meeting.

NOW IS
THE TIME

To mist plants often. Also check soil moisture. Do not let plants dry out.

To plant cuttings. This is an ideal time of year for rooting and growth.

To make sure you have removed fruit. No point in letting your epis go through all that trouble if you do not intend to use the seeds.

To continue fertilizing on a regular basis. Your epis need food to grow and to produce well next year.

To take advantage of the low cost plant opportunities listed on page 5.

JUNE MEETING
(cont. from page 1)

table full of bags of cuttings. Thank you folks for your generosity.

Charlie Coons also had a fine selection of cuttings and some nice 4" potted plants for our guest.

There were 5 guests and 107 members attending.

Gene Schmedding
Sean Minogue

SEED CULTURE BEYOND HASELTON

Text and drawings by
Sean Minogue

In the 40 years since its original publication, Scott E. Haselton's landmark *EPIPHYLLUM HANDBOOK* has established itself as 'the' guide to growing our plants. During that same period however, progress has been made, techniques mastered and some hard and fast 'rules' have been softened.

Often with wonderful results.

In his chapter on Propagation From Seed, Haselton begins his remarks with this sentence, "Raising Epiphyllums from seed should be left to the commercial grower". Yet today we know that seed propagation is a very rewarding aspect of Epiphyllum culture.

Today commercial Epi growers, such as California Epi Center in Vista, are unable to devote the space and time necessary for major seedling development. Nursery owner Lois Burks advises that they may have only a dozen of their own crosses in various stages of development at any one time.

Commercial growers must rely on professional, semi-professional and amateur hybridizers for the new blooms that grace their catalogs.

Growing Epis from seed is easy enough to do but be warned early on, the process requires patience. Seedlings may well bloom by their third year but you will want consistent blooms for at least three years before you should

consider registering the new hybrid with the ESA.

We will discuss hybridizing in a future article and here will be restricted to methods for sprouting and growing the seeds in the first few months of life.

Mr. Haselton suggests that epi seeds be sprinkled on coarse, leafmold rich soil. They should then be covered with a layer of charcoal and kept moist. He adds that they should be protected from bright light with temperatures between 65 and 90 F.

Haselton continues by transplanting the half-inch seedlings into flats and six months later transplants again into 2" pots. These then are grafted when they "are large enough to handle" on to *Selenicereus* (he favors *macdonaldiae*). "After it has made sufficient growth the three-in. branches may be regrafted onto *Opuntia* stock. Older growth may be treated as cuttings and put on its own roots."

Consider this method by Helen Barkdoll from her article HOW TO GROW EPIPHYLLUMS FROM SEED which appeared in the January 11, 1984 *Epi News*. Growing epiphyllum from seed "requires only the space of a saucer, a small pot, some potting soil and the seeds."

She continues "Thoroughly wet the soil and sprinkle the seeds evenly over the wet surface. It is not necessary to cover the seed as long as you keep the soil damp and the atmosphere humid by covering the pot with a glass jar or plastic cover."

"Remove the cover when the plants have reached the top."

Some experts recommend sprouting the seeds on dampened cloth or paper toweling inside a jar and planting the successful seeds only. Epi seeds have a failure rate of anywhere from 30 to 80 percent and this enables the grower to "weed these out" before planting.

Both Haselton and Barkdoll suggest keeping the growing medium damp. This is essential. Once sprouted epis are very much at risk in a dry environment.

Helen recommends that you feed with "a liquid fertilizer such as Sterns Miracle Grow (15-30-15) everytime you water them."

Results may be visible in a few weeks. The seedlings begin life as a two leafed sprout and soon develop a spiny cylindrical form. This eventually flattens into the familiar branch shape.

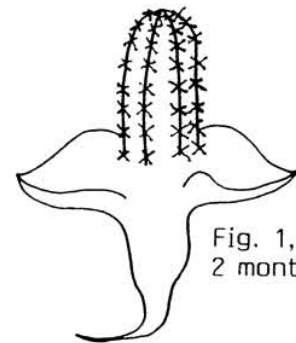


Fig. 1, Seedling at 2 months

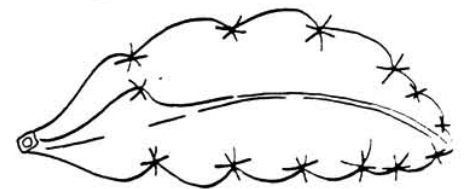


Fig. 2, Branch flattens, juvenile spination is retained.



Fig. 3, Mature branch

HERE'S A TIP !

Epiphyllum seedlings can be grown in many different containers, from fancy terraria to everyday items. Be creative or add your own touches to these ideas.

The most familiar type is the Soda Bottle Terraria made from the large (2 lt.) torpedo shaped plastic containers. Use only the clear ones for this.

Remember that colored glass or plastic will block light unacceptably. Watch the amount of light your seedlings receive. Try different locations until you find your own perfect microclimate.

Whatever container you choose notice first what sort of drainage is afforded. Watertight containers will need special attention. Like their parents, Epi seedlings like moisture but don't like to sit in stagnant water.

Airtight containers should be opened to give the seedling an occasional breath of fresh air.

A long time stand-by is the plastic shoe box. A real favorite because they will support a good size seedling population.

Clear drinking glasses and plastic tumblers make good homes when they are covered with plastic wrap. (This may sound odd but works very well. Used glasses can usually be found at thrift stores for just a few cents each.) Hold the plastic wrap in place with a rubberband or clear tape.



STEP TWO: Cut top off and discard.

STEP ONE: Remove clear plastic bottle from base.

Make sure base has holes for good drainage. Most do.

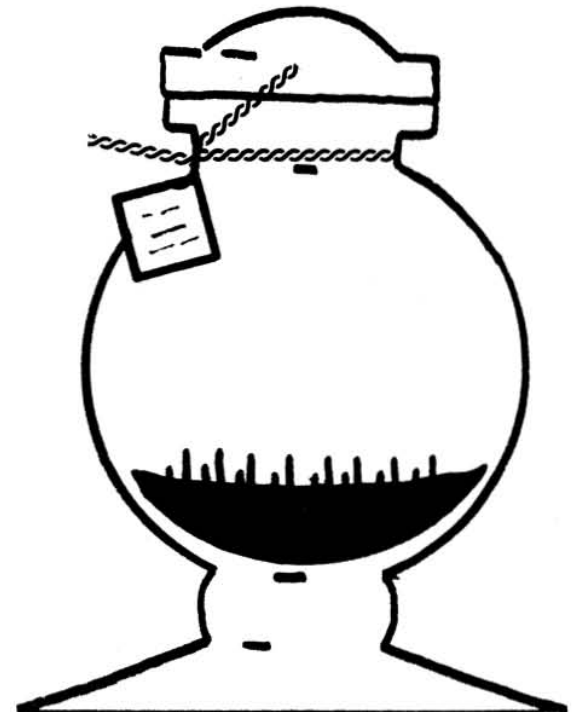


You'll be able to tell just when to water by the amount of condensed water on the side of the plastic. Check regularly at first and you will soon figure out a timetable that will assure the correct humidity.

You can make a treasured gift for an Epi loving friend by putting a special young seedling in a nice jar or bottle. You'll want to include the names of both parents and any other important data.

Apothecary style glass and plastic bottles are inexpensive and can be found in a number of sizes. Cost-Plus and Pier One import stores usually have a good variety.

Use your imagination, let me know what you use.



Sean

Ferguson's
**CACTI &
 SUCCULENTS**

AND EPIS TOO!
 HOURS 9 to 5
 CLOSED TUESDAYS

113 North Acacia
 Solana Beach

Epiphyllum-related library collection for sale, \$150.00 (including postage; write for list). Soil sterilizer, propane/steam, 18 flat volume. Soil Mix blender on rolling frame, 25 gal. capacity, hand powered. Both pieces of equipment \$250.00. Call or write: Dean Walters, 32 W. Anapamu #189, Santa Barbara, CA 93101, Phone (805) 966-7413



BEAUTIFUL "NIGHT BLOOMER" free to a good home. Also Oleanders, perfect for a couple just starting out, at no charge. Call Louise Newman 448-3145 evenings only.



FULL COLOR "Flowering Jungle Cacti" catalog \$1.00 (deductible). Hundreds of epiphyllums. Christmas/Easter/Rattail cacti, night blooming cacti, hoyas, haworthias. SDES members will also receive our 1986 "Unrooted Cuttings" list of 70 additional epis. The following 1986 lists are available FREE...send long stamped envelope...A) 1986 Catalog Supplement-21 color photos, 64 plants. B) Rhipsalis list - over 70 species, 33 illustrations. C) Serious Collector List - 28 true epiphytic cactus species for the advanced collector. D) Haworthia List - over 100 species. The nursery is open by "appointment". Please call. If we're here, you're welcome to come by. All of the plants mentioned above are available, and we have a large selection of epi baskets...2 young plants to the pot...at very reasonable prices...starting at \$6.00. The flowering season may be over, but the "plant season" is at its peak! Everything is growing like mad, and those epi baskets are getting better looking by the day. They're bound to be blooming size by next spring. California Epi Center, Box 1431-SDES, 1444 E. Taylor St., Vista, CA 92083. (619) 758-4290.

FREE MATURE EPIS FOR SDES MEMBERS

Plants show new growth, but need tender loving care. Varieties you will be proud to own, have been neglected by aging gardener. Can you provide a home for a starving plant? Take a carload or a truckload. Free to members.

This is our way of showing appreciation to the society.

No "UNKS" or unnamed plants.

Sam and Adela Markey

NOTE: Mr. Markey advises that all plants have been given to Charlie Coons for distribution. Call Charlie at 477-4069 or see him at the July General Meeting for details.



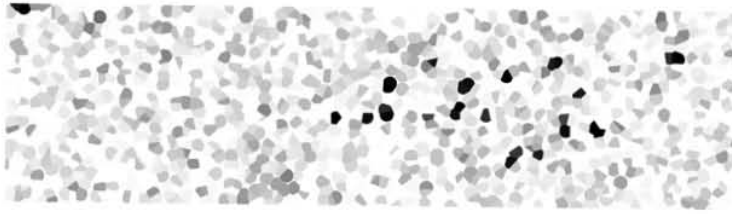
EPI SALE

Mature plants in one and two gallon pots at very reasonable prices.

Sat. and Sun. July 12th and 13th. 9am to 1pm

Johnny Fetko
 11097 Pegasus Ave.
 San Diego (Mira Mesa)

619 695-3343



SAN DIEGO, CA 92112-6127

P. O. 126127

S.D.E.S. - EPI NEWS

BOTANICAL EVENTS

July 13
Convair Garden Club's 36th
Summer Show
CdP/101
1p.m. to 4:30p.m.
FREE

July 26 & 27
San Diego County Orchid
Summer Show
CdP/101
Sat. 2p.m. to 5p.m.
Sun. 10a.m. to 4:30p.m.
FREE

Aug. 2 & 3
San Diego County Dahlia
Society Annual Show.
CdP/101
Sat. 2p.m. to 5p.m.
Sun. 10a.m. to 4:30p.m.
FREE

MEMBERSHIP information

The San Diego Epiphyllum
Society, Inc. is open to
all persons interested in
growing, displaying and
collecting Epiphyllum and
its related species.

Meetings are held the
second Wednesday of each
month.

7:30 P.M.
Room 101, The Majorca Room
Casa Del Prado
Balboa Park
Guests are welcome to all
regular meetings.

Dues in the SDES are
\$6.00 (\$12.00 foreign) per
year for each individual
or married couple. Please
send checks, payable to
San Diego Epiphyllum Society
Inc. to:

SDES Membership
P.O. 126127
San Diego, Ca 92112-6127