

EPI NEWS

NOVEMBER
12, 1986

The monthly publication of
SAN DIEGO EPIPHYLLUM SOCIETY, INC.

vol. 10, no. 11

BANQUET TICKETS STILL ON SALE

Tickets are still on sale for the last event of the year for this society - and what an event it will be! However, Dec. 1st will be the last day to buy tickets and Dec. 5th will be the last day to cancel.

Tickets are \$12.00 for SDES members and \$24.00 for guests.

The event will be the 10th of December at 6:30 p.m. at the Bahia Hotel in the Mission Room Room (the top floor with the crystal chandeliers) 998 West Mission Bay Drive. For questions call Margaret Pethley, Chairman, at 461-8607 or Elinor Latimer at 697-4100.

EXEC. BOARD MEETS EARLY IN NOVEMBER

The November Executive Board meeting will not be held on the fourth Wednesday of the month, due to Thanksgiving. The meeting date and location will be announced at the November General Meeting.

SDES TO VOTE ON OFFICERS AND BOARD

SDES members will have the chance to voice their support for the candidates nominated for the various society offices, by casting a vote at the Nov. 12th General Meeting.

All of the candidates are running unopposed. The candidates are:

President-
Milt Turner

1st Vice President-
Rick Latimer

2nd Vice President-
Dorothy Breining

DEADLINE FOR DECEMBER IS NOV. 20

Send items to:
SDES Epi News
Sean Minogue, editor
808 Ethel Place
National City, California 92050

WELCOME NEW MEMBER

Dennis Nouchi San Diego

BARKDOLL TELLS PLANS FOR PROGRAM

Is your shade house a riot of color? It could be if you plant Christmas Cactus among your Epi phyllum. Their culture is very similar and they make a brilliant display of color at a time when most epis are green and plump.

This month's slide program will explore the exciting new varieties of the many different colored flowers of the Zygo-cactus. You will learn how to grow them among your epis, learn about their culture and growth habits. You will also receive a free potted cutting to get you started or to add to your collection.

Christmas Cacti are now available in the garden departments of many local stores. Most are not labeled, which presents a problem in naming varieties. To help untangle names, please bring in your plants or a segment with flower, named or unnamed and we will compare them and try to organize their labels.

Come, show off your Zygocactus and enjoy a slide program of this marvelous winter flowering epiphyte.
Helen Barkdoll

A TREE MEANS CHRISTMAS AT THE PRADO

by Sean Minogue

The San Diego Floral Assoc. will hold its annual CHRISTMAS ON THE PRADO celebration December 5,6 and 7. This year the theme is "A Tree Means Christmas". Hours are:
Fri. 5pm to 9pm
Sat. noon to 9pm
Sun. noon to 4pm

This free event is held in Room 101, Casa del Prado, Balboa Park.

Food and Beverages will be available and usually plants and other items are sold to raise money for the Floral Association.

That same weekend the CHRISTMAS IN FLOWERLAND BAZAAR AND PLANT SALE will be held at Quail Botanical Gardens in Encinitas. Hours for this event are 10am to 4pm SUNDAY ONLY.

Sale includes plants, crafts, gourmet, gem and mineral items. Free admission and parking. For information call (619) 436-3036.

Quail Gardens is about one quarter mile east of I-5 just off Encinitas Blvd., at 230 Quail Gardens Drive.

Its time to think about the folks on your Christmas and holiday lists. Plants are a perfect gift!

EPI NEWS "CUTTINGS"

A round-up of news items.

Sorry to report that I do not have the list for November Goodies. Please bring something if you signed up. If you did not sign up but can bring something, please do. Our very special program for November is liable to bring many friends to our meeting.

.....
Cuyamaca Botanical Society will hold the Southern Calif. Nursery Show, Thursday Nov. 13th, 10am to 7pm, at Al Bahr Shrine Temple. Proceeds benefit Cuyamaca College Scholarship Fund.

.....
Some of you have asked about the availability of back issues of Epi News. Most can be had in photocopied form. Please let me know the specific issues you want and I will advise you about the availability and cost (depending on length of a particular issue this service charge will vary).

Sean Minogue
808 Ethel Place
National City, CA 92050

.....
Elinor Latimer is back at SDES functions. Members were pleased to see her return after a recent hospitalization.

.....
Gus Schlapfer reports that SDES member Tineke Wilders suffered a concussion in the line of Epi duty. While making cuttings at the SDWAP's Epi House Tineke hit her head on one of the massive clay pots. Ouch!



A spent blossom clings to its berry as the cycle continues. Photo taken at SDWAP's Epi House by Sean Minogue.

ELECTIONS (cont. from pg. 1)

Recording Secretary-
Debbie Capp

Corresponding Secretary-
Gene Schmedding

Membership Secretary-
Jeannie Burger

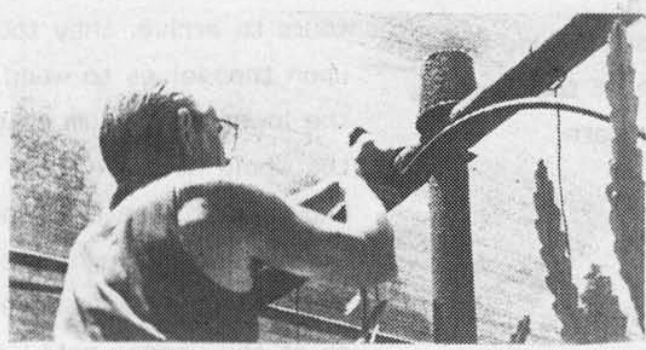
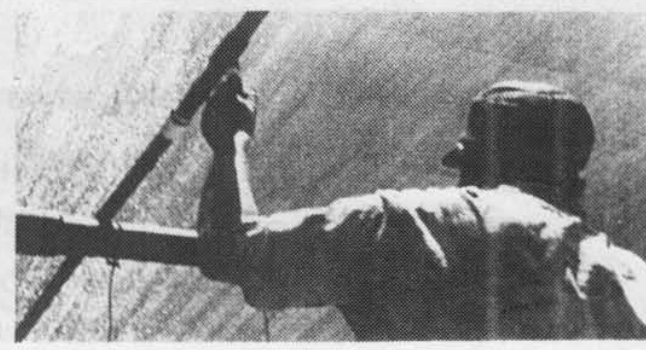
Treasurer-
George Plaisted

Officers are elected for a one year term.

Executive Board Members-
Richard Plock
Charles Coons
Kathie vanArum
Sean Minogue

Executive Board members are elected for a two year term. Four positions are available.

Photos by Sean Minogue



Photos taken at July 19, 1986 work party at San Diego Wild Animal Park. TOP LEFT) Vernon Hook uses tape to attach miniature hose above potted epis. TOP RIGHT) Charles Coons taps water line for new misting system. LEFT) Nate Ogdon gives himself room to work with an inverted pot to hold the shade cloth up and away.

The following people graciously gave so that our Epis in the Epi House at the San Diego Wild Animal Park will be more efficiently and less laboriously watered.

We heartily thank you.

- | | | |
|-----------------------------|-----------------------------|---------------------------|
| Debbie Capp | George and Madeline French | Sam and Adela Markey |
| Dennis and Martha Weiss | Bob and Nita Stroberger | the Latimers |
| James Weiss | Dale and Michiko Munda | Dr. Richard Plock |
| Pat and Edna Hopper | Bill and Lois Tripp | William G. Betts |
| Gary and Michelle Jaquay | Russel and Catherine Burger | Ron and Joan Miller |
| Ellen Jacob | Paul and Jean Gray | Gus and Marge Schlapfer |
| Dick and Marie Chadwick | Bob and Jeannie Burger | Vernon and Sako Hook |
| Evelyn Shiraki | Gloria Alexanderson | Harry and Margaret Blake |
| Norman and Sylvia Duckworth | Rex and Suzuko Ellis | George and Gerry Plaisted |
| Andy and Thelma Capp | Maud Hamilton | Henry and Elsie Raphael |
| George Jennings | Everett and Norma Gunter | Elizabeth Glover |
| Kathie vanArum | Wilbur Glover | Bill And Betty Klump |
| Ralph and Elinor Berry | Louise Newman | Margaret Pethley |
| Harold and Gladys Barnes | Dr. H. and Blanche Hafiz | John Piland |
| Curt Hammel | Penny Bunker | George and Jean Watson |
| Adolph and Irmela Paul | Mr. and Mrs. Packer | Nate and Dorothy Ogdon |
| Jim and Michele Davis | Don and Lucille Irwin | Wally Musser |

The misting system at the SDWAP Epi House is now a reality!

Thanks to everyone who helped by donating time and money and more.

B & B SHOW WRAP UP

GOOD SALE, GREAT SHOW

by Sean Minogue

The San Diego Wild Animal Park held its annual Beauty and the Beast Horticultural Show Oct. 11th and 12th. The show was the biggest one yet. Exhibitors lined the entire length of the covered walk-way in the Nairobi Village section of the park.

In addition to the fine exhibit "Propagating Epiphyllum From Seed" put together for our society by Dick Chadwick, the membership of SDES was well represented. Many other exhibits were presented by or staffed by familiar faces.

The plant sale was, as usual, well worth the drive to San Pasqual. I know after shopping Saturday morning I had to phone for financial re-enforcements.

Many of the plants available were unusual and rare, to say the very least. My favorite find of the weekend was *Solanum Pyracanthum*, a leafy plant covered with cactus like spines. The leaves also are spiny veined with a terra-cotta red color. Very nice, I only hope I can keep it that way.

HELPERS THANKED

by Dick Chadwick,
SDES/SDWAP Representative

Saturday was a cloudy dreary day but some of the members participating were:

John Piland
Pat Barrett
Jack Graham
Curt Hammel

Standing by as back-up, if needed, were Gus Schlapfer, who was there with the "Master Gardeners" and Sean Minogue who had an exhibit of his own.

Sunday was a beautiful day to be in the park; as a matter of fact it was a beautiful day to be outside anywhere in San Diego. Members deciding to spend the day at the Wild Animal Park were:

Nate and Dorothy Ogdon
Gus Schlapfer
Jack Graham
Pat Barret
Gloria Alexanderson
Ernest Angus
Leonor Arbayo
Kathie vanArum
Lois and Bill Tripp
Elizabeth Glover
Wilber Glover
Rose Martinez
Dick Chadwick

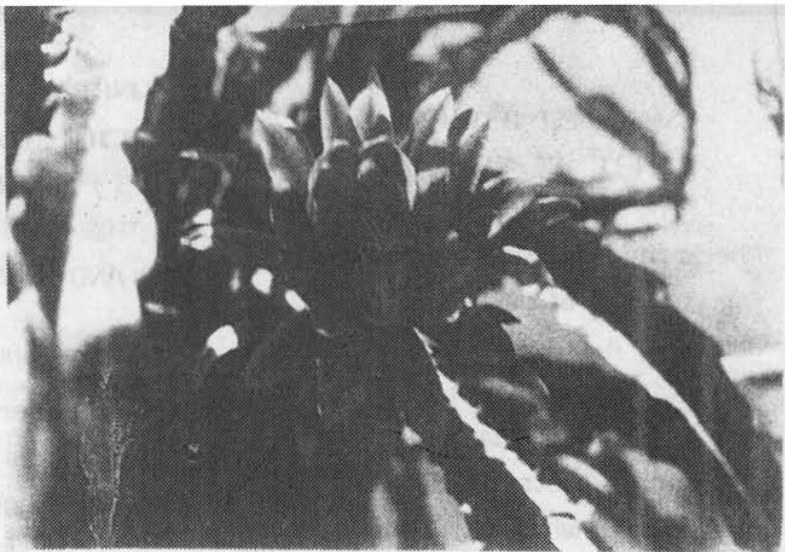
We received an extra bonus from Lois Tripp and Leonor Arbayo. While hosting at the epi house and waiting for the tours to arrive, they took it upon themselves to weed all the lower epiphyllum pots in the whole house. (If I had known they were that ambitious I would have brought them a ladder and let them have a go at the upper pots.) Another bonus was in having Nate and Dorothy Ogdon, the old pros of the show. They were sweet-talking people all day to buy epi cuttings, one man bought 76.

THANKS TOO, TO CUTTING PARTY HELP

by Dick Chadwick

Again we had a great group at the Wild Animal Park to make cuttings for the Beauty and the Beast Show. Those members participating were:
Nate and Dorothy Ogdon
Ernest Angus
Gus Schlapfer
Charles Coons
Pat Barrett
Jack Graham
Elizabeth Glover
Wilbur Glover
Dick Chadwick

Proof that the Epi collection at the San Diego Wild Animal Park blooms nearly year-round. This photo was taken in late July by Sean Minogue.



EPI CULTURE

All leafy plants and stems that function as leaves, must have their green cells (chlorophyll) or they cannot transform food into growth and flowers. The action of sunlight is required as the motivating energy of these green bodies as they convert plant foods into various cells resulting in growth and woody tissue. Strong sun kills both chlorophyll and pigments and the branches take on a pale or yellow appearance. If the sunburn is severe the branch will die. Move the plant to a more shaded area and mist the plant with "Watch-Us-Grow" or any other foliage feeder.

This same principal applies to plants that have turned red due to being in a cold draft. Move to a protected area and leaf feed to bring back the green. If the branch has turned totally red usually it won't turn green again so it needs extra fertilizer to compensate for the loss of chlorophyll.

Dick Chadwick

A MEMBER ASKS

Q. What do the new By-Laws mean to my wife and me? We've been members since 1979 and have paid our dues til March 1987. Is one of us going to have to buy a ticket to the Christmas Awards Banquet at the 'guest' rate of \$24.00?

A. As is the case with any consumer product sold in California, SDES can not change the terms of sale once you have purchased your membership. In other words, once you have paid for your membership, you are both members until your expiration date.

When your current membership does expire, the coded number on your Epi News label is the renewal date, you will be joining under the new rules.

Since the Executive Board has reduced the cost of individual memberships from \$6.00 to \$3.00 per year (domestic) the cost to you and your wife will be unchanged.

You will be asked upon renewal of your membership to tell the society the number of copies of the newsletter your household would like to receive. Each individual member is entitled to a copy, but seldom are multiple copies needed. Please let us know your specific needs.

OCTOBER'S GENERAL MEETING

Our October 8th General Meeting was a full one.

A vote was taken and the new SDES By-Laws were approved as submitted to membership.

The program was given by our society's photographer, Charlie Coons. He showed slides of the various activities that our society has engaged in this last year. The slides included all the different flower shows and featured our own Mother's Day show and our beautiful awards banquet. You did a good job Charlie.

Don't forget your potted plants for the Christmas Awards banquet. One plant for each member in your party. Decorate your pot with a Christmas theme.

I hope to see everyone there. Don't delay getting your tickets.

Gene Schmedding

NOVEMBER EPI CARE

by Sean Minogue

Check the weather reports now for warnings of severe frost and wind. A good freeze can wipe out a healthy epi in no time flat. Plants that are outside can be protected for a short period with newspaper but plastic sheeting will provide more durable protection.

Hail can scar your epis badly, the damage is more from the prolonged contact of the frozen water and the plant tissue than it is from the impact of the hail itself. If your plants are subjected to a brief hail-storm, rinse the ice off the branches at once.

All epis love a nice soft breeze but too much wind can ruin hanging and freestanding plants. When hanging pots start swinging in the wind the potential for broken branches and pots increases. Many plants have suffered major set-backs when they were blown off the shelf. It's little consolation to know that you can pot the broken branches as cuttings.

PLANTS THAT GROW WELL WITH EPIS

THIS MONTH:

CACTI AND BROMELIADS

by Sean Minogue

This occasional series of articles, of which this is the first, is intended to suggest some plants that grow well among or near our epis.

Bromeliads are a favorite. They are found in many of the same regions as our epis and their culture is similar. Bromeliads tend to tolerate light better than epis (some need direct sun at least part of the day to develop their color). You can learn more about Bromeliads from the San Diego Bromeliad Society. Their monthly meetings are held on the first Thursday of the month at the Byzantine Catholic Church, 2235 Galahad Rd., Serra Mesa. Meeting time is 7:45 p.m.

Call Jack Percival at (619) 222-7327 for more information.

Many people are astounded to find out that our beloved epis are a cactus. Many epi lovers find that they develop a taste for cacti and add them to their collections. A good source for both cactus plants and knowledge is San Diego Cactus and Succulent Society. Each of their meetings focuses attention on one cactus and one succulent group. You'll be surprised at the variety of plant forms and species. Their monthly meetings also feature plants sales, where great bargains and rare plants can be found, many times in the same container.

The SDCSS meetings are held at 1:30 in CDP/101 on the second Saturday of the month. Call Dr. Leroy Phelps at (619) 280-9690 for more information.

At this time of year it is wise to call before you drop in on the meetings since many plant societies are holding their seasonal get-togethers and guests might not be welcome at a particular meeting.

EPI NEWS

is published monthly by:

San Diego Epiphyllum
Society, Inc.

Sean Minogue, Editor
P.O.Box 126127
San Diego, CA 92112-6127

Society Officers

President:
Ron Miller (746-9620)

Vice President (Programs):
Rick Latimer (697-4100)

Vice President (Membership):
Jeannie Burger (287-9193)

Treasurer:
George Plaisted (583-9551)

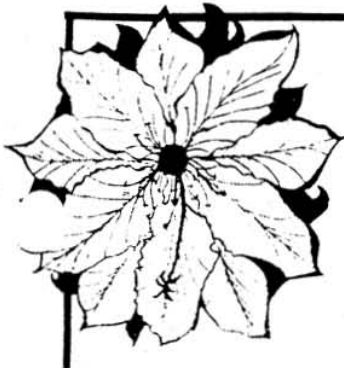
Recording Secretary:
Debbie Capp (469-4784)

Corresponding Secretary:
Gene Schmedding (421-6510)



SUPPORT OUR
ADVERTISERS

GOOD NEWS! Our all new FULL COLOR 1987 "Flowering Jungle Cactus" catalog should be ready this month. Reserve your copy now. The catalog price is \$2.00 (refundable). We've increased the catalog size substantially to 48 pages, 174 photos and 542 plants... epiphyllums, Christmas/Easter/Rattail cacti, ripsalis, hoyas, haworthias, and other succulents. The nursery is open by "appointment". Please call. If we're here, you're welcome to come by. All of the plants mentioned above are available, and we have a large selection of epi baskets...2 young plants to the pot...at very reasonable prices...starting at \$6.00. The flowering season may be over, but the "plant season" is at its peak! Everything is growing like mad, and those epi baskets are getting better looking by the day. They're bound to be blooming size by next spring, and will make great Christmas gifts. California Epi Center, Box 1431-SDES, 1444 East Taylor St., Vista, CA 92083. (619) 758-4290.



RAINBOW GARDENS has another new plant/bookshop catalog out! Brand new 1987 color catalog of gorgeous epiphyllums, ripsalis, rattail cacti, hoyas, night-blooming species. Almost 100 color pictures! PLUS: 4 page black and white photo brochure on Sansevierias! PLUS: 16 page bookshop catalog offering such books as Epiphyllums, Cacti, Succulents, Ferns, Bromeliads.

All of the above for only \$1.00. Send today to: Rainbow Gardens, Box 721-ESD, La Habra, CA 90633-0721.

COUPON • COUPON • COUPON • COUPON • COUPON • COUPON • COUPON

FREE PLANT!!
(OFFER EXPIRES APRIL 1, 1987)

We've expanded our Nursery/Sales area and would like those of you within driving distance to come and visit us. In so doing, we'll give you a FREE plant of your choice (minimum \$3.00 value) from a select table of hundreds of plants! Our way of saying "THANK YOU" for being such a valued customer! And while you're here, take a look at our:

ORCHID CACTUS, CHRISTMAS CACTUS, RATTAIL CACTUS

1000's of Potted Plants • 100's of Young Basket Plants 6"-8"
ALL AT REASONABLE PRICES

REMEMBER! PLANTS AND BOOKS MAKE GREAT GIFTS FOR CHRISTMAS, BIRTHDAYS, ANNIVERSARIES, ANYTIME! CALL NOW FOR APPOINTMENT; 7 DAYS A WEEK.

TO RECEIVE YOUR FREE PLANT,
THIS COUPON **MUST** BE PRESENTED
AT THE NURSERY.
NOT VALID ON MAILORDER SALES.

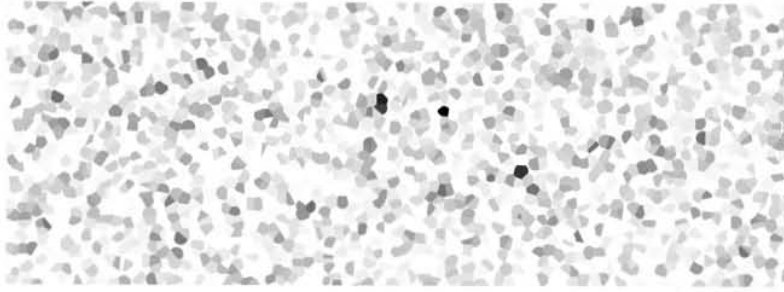
RAINBOW GARDENS NSY/BKSH
1574 E. DOROTHEA ROAD
LA HABRA HTS., CA
(213) 697-1488

HOLIDAY CACTUS SPECIAL

----Until December 15th----

We're having a special
For only \$11.95 + \$.72 tax
we'll U.P.S. to you (shipped
out of pot) the following:
CHRISTMAS CACTUS "GOLD
CHARM", CHRISTMAS CACTUS
"KRIS KRINGLE", EASTER CACTUS
"KRIS KRINGLE", EASTER CACTUS
"ORANGE SPRING BEAUTY"
AND RHIPSALIDOPSIS ROSEA.
Culture Care sheet will be
included, along with our 1987
plant/bookshop catalog. What
a present for you or a friend!

COUPON • COUPON • COUPON • COUPON • COUPON • COUPON • COUPON



SDES - EPI NEWS
P.O.BOX 126127
SAN DIEGO, CA 92112-6127

MEMBERSHIP INFORMATION

The San Diego Epiphyllum Society, Inc. is dedicated to promoting
the growing, displaying and collecting of Epiphyllum,
and its related species.

Meetings are held on the second Wednesday of each month.
7:30 pm, Room 101, Casa del Prado, Balboa Park

Individual memberships are \$3.00 per year domestic, \$12.00 per year international
Organization memberships are \$6.00 per year (domestic).

Checks payable to the San Diego Epiphyllum Society, Inc. should be mailed to:
SDES-Membership

P.O.Box 126127
San Diego, CA 92112-6127