

# EPI NEWS

DECEMBER  
4, 1986

The monthly publication of vol. 10, no. 12  
SAN DIEGO EPIPHYLLUM SOCIETY, INC.

## A MESSAGE FROM YOUR PRESIDENT

### CHRISTMAS BANQUET TO HONOR MEMBERS

Put on your holiday finery. The SDES Installation and Awards Banquet is December 10th at 6:30 p.m.

The event will be held at the Bahia Hotel in the Mission Room. Ticket sales have ended. December 5th is the last day to cancel. For info call Margaret Pethley at 461-8607.

The banquet is the last SDES event of 1986. There will be no December Executive Board Meeting.

---

### BARKDOLL'S PROGRAM SHOWS BEST OF ZYGOS

Thanks go to member Helen Barkdoll for the wonderful slide program she gave at the November General Meeting. We are so lucky to have Helen in our society, she is certainly one of the most enthusiastic promoters of the Zygos and their cousins. The combination of Helen's knowledge and the beautiful photos (many taken by her husband Bob) made for an excellent program.

I want to take this opportunity to thank the membership and the Executive Board, for their show of support during the past eighteen months during which I have served as your president. It has been sincerely appreciated.

As I reflect back on my term as your president, I am disappointed that we were unable to accomplish some of the goals I established when taking office.

On the brighter side, we had an excellent Mother's Day Show, with proceeds from plant sales that were among the highest on record. For the first time, we exhibited our beautiful blooms at the San Diego Home/Garden Magazine show at the Del Mar Fairgrounds, where thousands of people saw them, many for the first time. Additionally, we had a number of open garden tours for our members and friends, participated in activities at the San Diego Wild Animal Park, saw some excellent programs, continued to provide bus service to those desiring to attend the ESA show in Arcadia, held our annual Christmas Awards Banquet for our members, and continued to have excellent participation and display of epiphyllum blooms at our general meetings.

As I leave office, I want to encourage all of you to give the new president and officers the same support I have received. I also would like to encourage each of you to become involved and participate as committee members in the various activities of our society. The success of our society depends on your voluntary participation.

-Ron Miller

## ELECTIONS HOLD NO SURPRISES

New officers and Executive Board members were elected at the November General Meeting. As all candidates ran without opposition, the results held few surprises. The officers for 1987 will be:

President:  
Milt Turner

1st Vice President:  
(Programs)  
Rick Latimer

2nd Vice President:  
(Mother's Day Flower Show)  
Dorothy Breining

Recording Secretary:  
Debbie Capp

Corresponding Secretary:  
Gene Schmedding

Membership Secretary:  
Jeannie Burger

Treasurer:  
George Plaisted

All of the above were elected to one year terms. Officers will be installed at the Christmas Awards and Installation Banquet.  
(cont. next column)

## EDITORS COMMENTS

I would like to thank the many people who have helped make my first year as Epi News editor such a joy. My special thanks to:

Gene Schmedding  
Dick Chadwick  
Penny Bunker  
Helen Barkdoll  
Elizabeth Glover  
Jeannie Burger  
Joe Janes  
Joseph Minogue  
Milt Turner  
the staff of Holle Glass

These people and others have given many hours to help make this newsletter one that I am very proud of. I hope that you are too.

-Sean Minogue

12/4/86 page 2

## (ELECTIONS cont.)

Vice President Latimer, Treasurer Plaisted and Secretaries Capp and Schmedding will be serving their second consecutive terms of office.

Executive Board Members elected were:

Kathie vanArum  
Charles Coons  
Sean Minogue  
Richard Plock

Board positions are for terms of two years. Members Minogue and vanArum did not sit on the 1986 Executive Board.

## TRIVIA CONTEST "CAN YOU NAME THEM ?"

Our Grand Prize will go to the entry with the earliest postmark correctly identifying the members of the SDES Executive Board, as of Sept. 1986.

Send entries to:

SDES - EPI NEWS  
P.O.BOX 126127  
San Diego, CA 92112-6127

The contest is open to all members of SDES.

The Grand Prize will be one flat of 4" rooted epi cuttings (16 plants) if the winning entry is postmarked prior to December 10, 1986. If the winning entry is dated after December 10, 1986 the prize will be one-half flat of rooted cuttings (8 plants). All other entries will receive a 4" rooted cutting. All prizes will be awarded at the January General Meeting and must be picked up at that time.

The Grand Prize will contain some excellent epi's including Acapulco Sunset, Jennifer Ann and Soft Lights.

## HEALTH CAUTIONS FOR GARDENERS

Avid gardeners often focus on the pleasures of raising plants and forget some of the health risks involved.

Recently the San Diego Cactus and Succulent Society reminded its membership of the need to keep tetanus boosters up to date. Gardeners are at risk for this disease when they come in contact with unsterilized soils.

Cactus lovers (epi lovers included) should be aware that even small wounds from spines can expose the body to infection. Prevention, through vaccination, is urged for all who are at risk.

Gardeners who handle sphagnum moss should be aware of the disease sporotrichosis, a rare chronic infection caused by a fungus in soil, plants and decaying vegetation.

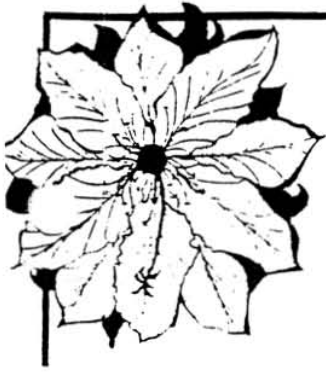
According to the Florida State Department of Health and Rehabilitative Services sporotrichosis may be introduced through the skin by pricks of barbs and thorns, the handling of sphagnum moss or splinters from wood or lumber. Sporotrichosis can be prevented by wearing gloves when handling sphagnum moss. Storage of sphagnum in an area outside the home, that is frequently disinfected, will also help prevent spread of the disease.

(Special thanks to the Master Gardeners for the information on sporotrichosis and to the SDCSS for the warning about tetanus.)

## DEADLINE FOR JANUARY ISSUE IS DECEMBER 20th

ALL EPI NEWS ITEMS SHOULD BE SENT TO  
Sean Minogue, Editor  
808 Ethel Place  
National City, California 92050

Items sent to the SDES box number may miss deadline.



RAINBOW GARDENS has another new plant/bookshop catalog out! Brand new 1987 color catalog of gorgeous epiphyllums, rhipsalis, rattail cacti, hoyas, night-blooming species. Almost 100 color pictures! PLUS: 4 page black and white photo brochure on Sansevierias! PLUS: 16 page bookshop catalog offering such books as Epiphyllums, Cacti, Succulents, Ferns, Bromeliads.

All of the above for only \$1.00. Send today to: Rainbow Gardens, Box 721-ESD, La Habra, CA 90633-0721.

COUPON • COUPON • COUPON • COUPON • COUPON • COUPON • COUPON

**FREE PLANT!!**  
(OFFER EXPIRES APRIL 1, 1987)

We've expanded our Nursery/Sales area and would like those of you within driving distance to come and visit us. In so doing, we'll give you a FREE plant of your choice (minimum \$3.00 value) from a select table of hundreds of plants! Our way of saying "THANK YOU" for being such a valued customer! And while you're here, take a look at our:

ORCHID CACTUS, CHRISTMAS CACTUS, RATTAIL CACTUS

1000's of Potted Plants • 100's of Young Basket Plants 6"-8"  
ALL AT REASONABLE PRICES

REMEMBER! PLANTS AND BOOKS MAKE GREAT GIFTS FOR CHRISTMAS, BIRTHDAYS, ANNIVERSARIES, ANYTIME! CALL NOW FOR APPOINTMENT; 7 DAYS A WEEK.

TO RECEIVE YOUR FREE PLANT,  
THIS COUPON **MUST** BE PRESENTED  
AT THE NURSERY.  
NOT VALID ON MAILORDER SALES.

RAINBOW GARDENS NSY/BKSHIP  
1574 E. DOROTHEA ROAD  
LA HABRA HTS., CA  
(213) 697-1488

COUPON

COUPON • COUPON • COUPON • COUPON • COUPON • COUPON • COUPON

HOLIDAY CACTUS SPECIAL

----Until December 15th----

We're having a special  
For only \$11.95 + \$.72 tax  
we'll U.P.S. to you (shipped  
out of pot) the following:  
CHRISTMAS CACTUS "GOLD  
CHARM", CHRISTMAS CACTUS  
"KRIS KRINGLE", EASTER CACTUS  
"ORANGE SPRING BEAUTY"  
AND RHIPALIDOPSIS ROSEA.  
Culture Care sheet will be  
included, along with our 1987  
plant/bookshop catalog. What  
a present for you or a friend!

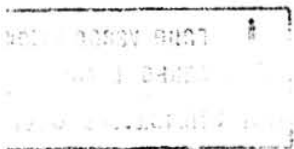
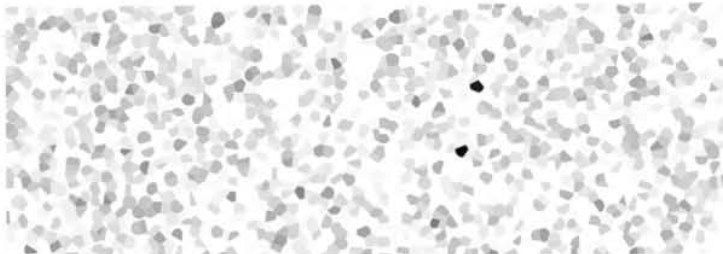
COUPON • COUPON • COUPON • COUPON • COUPON • COUPON • COUPON



CALIFORNIA  
**epi** CENTER

GOOD NEWS! We will be open 10:00 a.m. to 4:00 p.m. on the following three Saturdays in December for your Christmas shopping pleasure... Dec. 6th, 13th, and 20th. Please call if you would rather come at another time, and if we're here, you'll be welcome to come by. We have thousands of plants from which to choose; epiphyllums, Christmas/Easter/rattail cacti, hoyas, haworthias, and other succulents. We have an excellent supply of epi baskets potted two young plants to the pot...at very reasonable prices...starting at \$6.00. Our all new FULL COLOR 1987 "Flowering Jungle Cactus" catalog has been mailed to all of our California customers who purchased plants from us in 1986. If you purchased plants from us this year and haven't received the new catalog yet, please let us know and we'll get your copy into the mail. The catalog price for those of you who haven't purchased plants recently is \$2.00 (refundable). We'll include our \$3.00 Early Bird Coupon, which may be used with any purchase totaling \$15.00 or more, either from the catalog or at the nursery. We've increased the catalog size substantially to 48 pages, 174 photos and 542 plants. All of the plants mentioned above are offered in the catalog except the basket size epiphyllums which must be purchased at the nursery. California Epi Center, Box 1431-SDES, 144 E. Taylor St., Vista, CA 92083. (619) 758-4290.

SUPPORT OUR  
ADVERTISERS



SAN DIEGO, CA 92112-6127  
P.O. BOX 126127  
SDES - EPI NEWS

## MEMBERSHIP INFORMATION

The San Diego Epiphyllum Society, Inc. is dedicated to promoting  
the growing, displaying and collecting of Epiphyllum,  
and its related species.

Meetings are held on the second Wednesday of each month.  
7:30 pm, Room 101, Casa del Prado, Balboa Park

Individual memberships are \$3.00 per year domestic, \$12.00 per year international  
Organization memberships are \$3.00 per year (domestic).

Checks payable to the San Diego Epiphyllum Society, Inc. should be mailed to:  
SDES-Membership  
P.O.Box 126127  
San Diego, CA 92112-6127