



# EPI NEWS

the monthly newsletter of

SAN DIEGO EPIPHYLLUM SOCIETY, INC.

OCTOBER 14, 1987  
VOLUME 11, NUMBER 10

## NATE OGDON TALKS ABOUT GARDENS AT OCTOBER EPI MEETING

Nate Ogdon will be the featured speaker at the October 14th SDES General Meeting.

Nate will show slides and talk about visits he and his wife Dorothy have made to various botanical gardens in North America.

The program is sure to be of special interest because of the wide variety of plants depicted and Nate's inimitable style.

Included in the program will be botanical gardens in British Columbia, Montreal, Nashville and Washington D.C.

Nate also promises some photos of epis taken at home.

Meeting time is 7:30 p.m. at the Casa del Prado's room 101, in Balboa Park. Come early to meet friends, see the flowers and purchase cuttings.

## IN THIS ISSUE

George French Hybrids for '87

Big News in Area Epi Retailing

Opinion from Kathie vanArum

Beauty and the Beast at SD/WAP

and lots more...

## BANQUET TICKETS ON SALE AT OCTOBER MEETING !

San Diego Epiphyllum Society members may purchase tickets to the annual Christmas Awards and Installation Banquet at the October meeting, according to Banquet Chair Pat Barrett.

This years event will be held at Tom Ham's Lighthouse on beautiful Harbor Island, on Wednesday night December 10th. The banquet will be the only SDES meeting in December.

Pat is sure to provide many great ideas this year and a splendid time is guaranteed. Pat is one of our most creative members, with the help she is getting from Margaret Pethley you can be sure that the event will be first rate.

Tickets are \$10.00 for SDES members ( per our by-laws, membership as of Sept. 1987 is required for the members ticket rate). Tickets for guests are priced at \$20.00.

See your friends lauded, be lauded yourself. Watch as the officers for 1988 are duely sworn into office.

Tickets will be available at the October and November meetings, and must be purchased prior to December 1st, 1987. Call Pat for more information (619) 442-2404.

**BEAUTY AND THE BEAST**

Unfortunately information from the San Diego Wild Animal Park about the annual Beauty and the Beast Plant Show was late in arriving. Nevertheless, SDES will be participating in full.

Unlike previous shows this year there will be no big plant sale, but SDES will sell epi cuttings to benefit the park. SDES members will also offer demonstrations, display epi seedlings and give tours of the Epi House.

Saturday noon, George French will repeat his popular Epi Grafting demonstration. At 2 p.m. Sean Minogue will discuss raising Epi Seedlings. Sunday at noon Dick Chadwick will talk about growing epi cuttings.

The show will be held Saturday Oct 10th and Sunday the 11th during regular park hours.

There is still a need for volunteers for both days, if you can help contact event chair Sean Minogue at (619) 475-4478.

Workers may enter through the park's service entrance. Please wear your SDES name tag.

San Diego Cactus and Succulent Society will be holding their regular monthly meeting at the SD/WAP on Sat. the 10th. Their meeting time is 1:30 p.m. at the new pavillion just a few yards from the Epi House.

\* \* \* \* \*

Deadline for November is October 23rd. December's deadline is November 10th.

**NOMINATING COMMITTEE REPORT  
AND NOTICE TO ABSENT VOTERS**

The nominating committee of the San Diego Epiphyllum Society has made their formal report to membership. Elections will be held during the November SDES General Meeting.

The candidates are...

President- Milton D. Turner

1st Vice President(programs)-  
Kathie vanArum

2nd Vice President (Mother's  
Day Show)- Rick Latimer

Treasurer- no candidate

Recording Secretary-  
Margaret Pethley

Corresponding Secretary-  
Debbie Capp

Membership Secretary-  
Marjorie Marshall

Directors ( 5 positions open)  
Jean Gray, Gene Schmedding,  
Vernon Hook, Andy Capp and Pat  
Barrett.

**ABSENT VOTER INFORMATION**

Despite the fact that all candidates are unopposed our By-Laws provide for the automatic distribution of Absent Voter Ballots to all SDES members residing outside San Diego County. This ballot will be found on the last page of this news letter and may not be used by San Diego County residents. S.D. County residents must request their Absent Voter Ballots in writing from the Recording Secretary.

**COUNTY MAY ELIMINATE  
FARM & HOME ADVISOR**

The San Diego County Board of Supervisors will consider eliminating the San Diego Farm and Home Advisors Office's budget at their meeting on October 27th.

The county is considering the action as a way to fund jail construction.

In case you are not aware the Farm Advisors many programs include two which may directly touch you or people you know, namely the local Master Gardener program and the local 4H groups.

The United States Department of Agriculture and the University of California contribute 83% of the total budget for this county program, the county supplies only 17%. Because the Federal legislation creating the Cooperative Extension requires county participation, the program can not continue without their support. The funding may come only from county government.

A large segment of our county's population and our agricultural industry benefit from the programs of the Farm Advisors office. Please write to your supervisor and suggest that the county spare the Farm Advisors Office and look elsewhere for funding for jails.

Write to:  
(Your supervisor)  
Board of Supervisors  
County Administration Center  
1600 Pacific Highway Room 335  
San Diego, California 92101

**ROSTERS AVAILABLE IN OCTOBER**

SDES Membership Secretary Jeannie Burger announced that the 1987-88 Membership Roster will be available in limited quantities, at the October 14th General Meeting.

Come early to be sure that there will be a copy for you.

**NOW IS THE TIME**

Protect your plants from direct sun. As the angle of the sun changes make certain that your plants do not suffer from too much southern exposure.

Continue your regular feeding program to insure a healthy resting period (if your plants have a dormant season).

Be on the alert for snails and slugs. Bait now, follow lable instructions.

-Sean

\* \* \* \* \*

**ODDS AND ENDS**

As of this time we have no candidate for Treasurer during 1988. If you are qualified and interested contact President Turner as soon as possible.

\* \* \* \* \*

I'm sure Penny Bunker sent a listing, but I did not receive the goodies volunteers for the Oct 14th meeting. Did you sign up?

\* \* \* \* \*

Condolences to SDES Historian Blendina Boyle on the death, in September, of her father.

LETTER TO THE EDITOR:

In the last 2 months, editorials in our Epi News have taken to task our very effevctive president for lack of leadership and the Board of Directors for lack of inspiration. In his latest editorial he suggests that the Board be reduced in number and that each Board member be given a job that a chairman now holds.

As our organization now functions as many members as possible are given the opportunity to serve our society. Does he want to put our Society in the hands of just a few members. Ask anyone who has served on the nominating committee, and they will tell you how nearly impossible it is to get enough people willing to accept a place on the slate

The San Diego Epiphyllum Society is not the Alpha and Omega of most of our lives. It is a fun thing to belong to. Some of us have more time, need and desire to serve than others. However, each person is a valued member simply by being a member. We are a growing Society with an active membership, most botanical Societies envy our success.

As for our Society having a 2 day show, the first question is where would we hold such a show. The Cactus Society is not likely to give up Room 101, after the treatment they have recieved in the past by members of our Society.

There are also the problems of having enough flowers and workers for a 2 day show. Do

we have 2 potlucks?

Where would we find the workers. At our last show many people worked long hours at the door because there was no one to relieve them. Where do we get people for a 2 day show. I, for one am exhausted after our show, I simply could not do it for 2 days, and I have spoken to many who feel the same way.

Why is our awards dinner such a problem for our editor. Maybe there are some of our members to whom going to a party means sitting on a folding chair at a table covered with white paper and eating off of plastic plates with plastic knives and forks, but the majority of us prefer comfortable chairs, soft lights and a pleasant atmosphere.

There is not a person who can afford to use their resources to collect and care for plants, who can not afford to put away a dollar a month in a piggy bank in order to enjoy the comradery of our Awards dinner which has been a happy tradition for our Society for at least 12 years.

In the ten years, I have been a member of this Society, we have been through some difficult times, but the last two years we have had harmony. Why does our editor feel he must be a self appointed "Devil's Advocate" when he has not had the courtesy to bring any of his ideas before the Board of Directors for their consideration.

Many of our long time members  
(Continued on page 5)

(LETTER Cont. from page 4)  
have returned to our meetings,  
and it is so nice to enjoy  
their friendship in our  
present congenial atmosphere.  
Why can't our editor enjoy  
this strong growing Society.  
It is fun to come to an Epi  
meeting now. Can't we leave it  
that way?

Kathie vanArum

- - - - -

- A REPLY -

I would like to take the  
opportunity to answer some of  
Kathie's direct questions and  
some statements that I believe  
are not accurate. Other topics  
I'll save for another issue.

As your newsletter editor I  
believe it is my job to make  
opinions of members about the  
issues confronting SDES  
available to all. As an  
elected representative of  
membership I believe that it  
is important to solicit the  
opinions of my constituents.

Rather than the darker motives  
Kathie suggests, it is not my  
desire to "put our Society in  
hands of just a few members".  
This is not possible in our  
group. Our by-laws contain  
many checks, balances and safe  
guards about "power". Terms of  
office are limited. The power  
to spend money is limited to  
membership. Election of  
representatives is reserved  
for membership. By-Laws must  
be approved by membership. (In  
fact, if you carefully read  
the language of our by-laws  
regarding ammendments you  
soon realize that only General  
Membership is mandated a role.  
The Executive Committee rates  
no mention.)

Membership is clearly in

charge. This is as it should  
be.

I do believe that our Society  
could benefit from a reduction  
in size of its governing body  
from the current 16 (plus) to  
9. The best reason for this is  
found in Kathie's own words.  
"Ask anyone ...on the  
nominating committee, and they  
will tell you how nearly  
impossible it is to get enough  
people willing to accept a  
place on the slate."

Yet after the committee has  
gone through our talent pool  
to meet an unrealistic body  
count, we still need more.  
After the elections, the  
President must then draw from  
that same talent pool for  
committe chairs, because 9 of  
the people elected are not  
required to do anything more  
than attend 4 meetings a year.

We should make the job of the  
nominating committee a real-  
istic one and insist that they  
do it well, rather than be  
grateful to them for getting  
enough bodies to fill "a place  
on the slate". Likewise the  
members should know to what  
job their representitives are  
elected and insist that they  
do their jobs well.

Some members have returned to  
our meetings. I too welcome  
them and I am sorry that more  
of our dear members do not  
return. But it is wrong to  
say that we enjoy group  
harmony.

More revealing is the list of  
members who have been to our  
meetings lately and dropped  
their memberships, some in  
disgust.

( Continued on page 8 )

### GEORGE FRENCH'S 1987 HYBRIDS

George French has registered 19 new seedlings this year, with a wide variation of colors.

There have been some very popular favorites already including QUEST FOR FIRE. This huge bloom is the offspring of TELE and JENNIFER ANN. Its outer red margins and vermilion center make a dramatic effect.

For lovers of white flowers there is FRENCH VANILLA. This one is off white with light yellow sepals. George tells me that this is a good grower.

While you might expect any blossom called HONEY DEW to have been propagated by a couple in Bonita, not so. George crossed ANNA P. WILLIAMS with KING MIDAS for this outstanding flower, white with chrome yellow sepals, commonly 10 to 11 inches.

George rates NORWOOD as another great grower. The 10 1/2 inch flower has magenta on the outer margins, orange center and a throat of solid magenta.

SOLANA ROSE and VENETIAN both have a wavy edge to their petals. The former is a beautiful claret rose, the latter is a wide flower colored fuchsia purple with a reddish center.

An unusual flower, GOLDEN OCTOPUS has center petals that curve in to form a ball. At 10 inches across this light yellow flower is another TELE and JENNIFER ANN cross, proving the value of carefully

selecting your parent plants.

Also new for 1987 from George French are the following...

FRENCH CHIFFON, outstanding 9" greenish with pale yellow.

FRENCH CUSTARD, canary yellow. Outer sepals bronze with a yellow center margin.

GIANT EMBER (again TELE w/ JENNIFER ANN) is 12" and is shaped like JENNIFER ANN but is red with an orange center margin.

HONEY BELLE, 9" flower of pinks and bronze. Opens wide.

PACHECO is 7" of solid cyclamen purple.

RED BEE, this 7" double is two shades of red with a trace of magenta on the outer edge.

RED VOLCANO is brick red and 11 inches.

ROMAN MAJESTY has triangular growth. It is a 9" flower of tyrian purple and vermilion.

SUGAR FROST another white, this time the 9" flower has inner petals tinged with a yellow bronze.

GOLDIA'S DREAM is a cup shaped golden-orange flower with a red throat, 10".

OCEAN SUNSET 10 1/1 inches of red, fuchsia and burnt orange.

As you can tell, this is an exciting assortment of flowers. Leave it to George French to come up with some of the finest epis.

- Sean

ADVERTISEMENT ADVERTISEMENT  
CALIFORNIA EPI CENTER

If all goes according to plan, this will be our last message to all of you. We have sold our epiphyllum business and house to Chuck Everson and Jerry Williams of Rainbow Gardens. Shortly after November 4th 1987, when escrow closes, they will move to our location here in Vista, merge stock from both businesses, and operate under the Rainbow Gardens name. Bob and I will be moving to Avilla, Arkansas, which is 25 miles west of Little Rock, where we will open another mail order nursery called Burks Nursery. We will specialize in Haworthias, Gasterias, small aloes and other succulent plants. We will be leaving our epiphyllums and other jungle cacti behind. And we will also be leaving many good friends and customers. Which brings me to the main thrust of this message. We want to express our thanks to all of you for your friendship and support. Selling epiphyllums has been as lot of fun, in large part because of enthusisatic and friendly epiphyllum collectors like you. And we want you to know that you will not be forgotten. We are confident that when you visit the new Rainbow Gardens in Vista you'll enjoy the same fine quality plants and service that we have always tried to offer. If you'd like to visit California Epi Center before we leave please call ahead to make sure we're availble. California Epi Center 1444 E. Taylor St., Vista, Ca. 92084 (619) 758-4290

Lois & Bob Burks

ADVERTISEMENT ADVERTISEMENT  
GREETINGS FROM CHUCK AND JERRY  
AT RAINBOW GARDENS

Although most of you know us , we thought it best to say hello again, but this time from a different perspective. We know how hard it is to say goodbye to Bob and Lois Burks of California Epi Center. They are our friends too. But we'd all like to retire someday, and I guess for them now is as good a time as any. But do not fret----You will still have an epi nursery in San Diego County. Jerry and I have aquired California Epi Center, and will be combining our nursery and bookshop with theirs (we'll be known as Rainbow Gardens). We'll be open around Thanksgiving for visitors and customers. California Epi Center's 1987-1988 plant catalog is still valid, and we're coming out with a 1988 plant supplement (6 pages, 33 color pictures) It will be available around Thanksgiving and it is FREE if you send us a legal size self-addressed, stamped envelope. We'll give you our address in Vista in next month's Epi News on where to send your requests.

-----  
EDITORS NOTE:

Best of luck to the Burks and to Chuck and Jerry. Bob and Lois have done much to advance the popularity of Epis and we are all sorry to see them go. We are lucky to have Chuck and Jerry fill this void. In addition to their green thumbs they bring us a full scale botanical bookshop. Bon voyage and Welcome.

Sean

(REPLY TO LETTER from pg 5)  
The same divisive factions exist now that were evident at the first SDES meeting I attended in 1985. Our Presidents during this time have clearly had their hands full keeping our group together. It is time to move on.

Have faith in SDES. Our members do care and they have the best interests of the Society in mind. That must always be understood when any members makes a suggestion. To question any members right to make a suggestion to membership is absurd.

Have faith in SDES to be strong enough to debate the issues that confront it. Does the writer, in her last paragraph, really mean suggest that a debate of the issues within these pages will keep our meetings from being fun?

SDES is a neat group of people trying to share their love of a wonderful family of plants. But SDES needs to become responsible for doing a better, more effective job. SDES needs to listen to its members and not try to silence them when they disagree.

Sean Minogue

P.S. Let's hear from you. Signed letters only, please.  
\*\*\*\*\*

CALIFORNIA GARDEN magazine is the only gardening bi-monthly that is intended for San Diegans. A one years subscription is \$5.00 from:  
San Diego Floral Assn.  
Casa del Prado, Balboa Park  
San Diego, CA 92101-1619

**BOTANICAL EVENTS FOR FALL**

October 17th & 18th  
San Diego Co. Orchid Soc'y.  
Fall Mini-Show  
CdP/101  
Saturday Noon to 5 p.m.  
Sunday 10 a.m. to 4:30 p.m.

October 24th & 25th  
Sogetsu School of Ikebana Show  
CdP/101  
Saturday 11 a.m. to 4:30 p.m.  
Sunday 11 a.m. to 4:30 p.m.

October 31st and November 1st  
San Diego Tropical Fish Soc'y.  
17th Annual Show  
CdP/101  
Saturday Noon to 6:00 p.m.  
Sunday 9 a.m. to 4:30 p.m.

December 4th, 5th and 6th  
San Diego Floral Association's  
"Christmas on the Prado"  
Friday 5 p.m. to 9 p.m.  
Saturday 11 a.m. to 9 p.m.  
Sunday 11 a.m. to 4 p.m.

\*\*\*\*\*

**HAPPY BIRTHDAY SDES**

The official 17th anniversary of the San Diego Epiphyllum Society is October.

Congratulations to all who have helped us come this far.

\*\*\*\*\*

**HELP FILL THESE PAGES**

Your help is needed if Epi News is to continue to grow.

Please send your epi or garden related stories, articles, notices or other items to...

SDES Editor c/o Sean Minogue  
808 Ethel Place  
National City, CA 92050

**INSTRUCTIONS:**

For use only by members living outside SAN DIEGO COUNTY. All others must request Absent Voter Ballots in writing from the Recording Secretary. (P.O. Box 126127, SAN DIEGO, CA. 92112-6127).

Return completed ballot to same address before November Meeting.

Remove mailing lable before returning ballot.

Use unmarked envelope for return

-----  
**OFFICIAL SAN DIEGO EPIPHYLLUM SOCIETY, INC. ABSENT VOTER BALLOT**

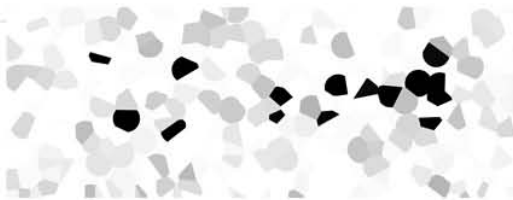
To be used only by SDES members as of October 14, 1987.  
NOT TO BE USED BY SAN DIEGO COUNTY RESIDENTS.

**OFFICERS (SELECT ONE FOR EACH OFFICE)**

President	MILTON D. TURNER	_____
1ST Vice President	KATHIE VANARUM	_____
2nd Vice President	RICK LATIMER	_____
Recording Secretary	MARGARET PETHLEY	_____
Corresponding Sec'y.	DEBBIE CAPP	_____
Membership Sec'y	MARJORIE MARSHALL	_____
Treasurer	NO CANDIDATE	

**EXECUTIVE BOARD DIRECTORS (SELECT FIVE)**

PAT BARRETT	_____	ANDY CAPP	_____	JEAN GRAY	_____
VERNON HOOK	_____	GENE SCHMEDDING	_____		



SAN DIEGO, CA 92112-6127  
P.O. Box 126127  
SDES EPI NEWS

EPI NEWS IS PUBLISHED MONTHLY  
BY SAN DIEGO EPIPHYLLUM  
SOCIETY, INC.

President Milton D. Turner

Editor Sean Minogue

SDES  
P.O. Box 126127  
San Diego, CA 92112-6127

editorial address  
c/o/ Sean Minogue  
808 Ethel Place  
National City, Ca 92050

Membership information:  
Checks payable to SDES should  
be sent to the p.o. box.

Meetings are the 2nd Wednesday  
of each month, 7:30p.m. in  
room 101, Casa del Prado in  
Balboa Park. Guests welcome.