



EPI NEWS

the monthly newsletter of

SAN DIEGO EPIPHYLLUM SOCIETY, INC.

APRIL 13, 1988

Vol. 12, No. 4

SPRING ARRIVES, CAN FLOWERS BE FAR BEHIND?

Neither frost, nor draught, nor creepy crawlers will keep epis from blooming again this year. And early word is that we can expect a fabulous blooming season.

Inside this issue of Epi News you will find information about shows, tours and other events that will help you make the most of this year's epis.

* * * * *

SUPPLY TABLE RUNNETH OVER

George and Jerry Plaisted have an assortment of epi and gardening supplies available at each general meeting. To hangers and markers the Plaisted's have added....

Fertilizers-
osmokote, milorganite,
liquinox (grow or bloom
formula)

Perlite in two sizes

Pots, baskets and wooden
planters

and much more.

Items are sold near cost, so
members save plenty over the
retail prices.

Come early and see how your
garden can grow, for less.

APRIL MEETING GIVES TIPS FOR MOTHERS DAY DISPLAYS

The April 13th SDES General Meeting will be "Getting Ready for the Mother's Day Show". Rick Latimer, Show Chairman, will show slides of props owned by the Society (and available for use in the show by members on a first come basis). Rick will also show slides of earlier shows.

Meeting time is 7:30 in Room 101 of the Casa del Prado in scenic Balboa Park.

* * * * *

NOBLE TO SERVE AS AWARDS CHAIR

John Noble will serve as chair of the 1988 SDES Christmas Awards and Installation Banquet according to an announcement made by President Milton D. Turner at the March General Meeting. John will be assisted by Banquet veterans Margaret Pethley and Pat Barrett.

Big events are not new to John. Since 1984 he has served as entertainment director for the annual Flower Festival in Encinitas. A scenic designer and builder by trade, John was responsible for the sets for the Pre-Game and Half-Time Shows at Super Bowl XXII and the 100th Anniversary of the Hotel del Coronado. More details soon.

ZOO ANNOUNCES
BREAKFAST LECTURE PROGRAM

The Zoological Society of San Diego has announced a series of botanical lectures and slide shows at the Zoo.

While some may find the programs somewhat expensive, certainly the quality of the presentations will justify the \$12.50 charge (plus admission to the Zoo of \$8.50) for each program. The Saturday programs include:

April 9th Loran Whitelock
"The Cycad Side"

May 14th Chuck Coburn
"Tiger River: Bringing Up Bamboos and Ginger Too"

September 10th Bill Knerr
"Raising Rare Fruits"

October 8th Jim Specht
"San Diego's Most Popular Plants: Palms"

November 12th Elizabeth Peiz
"For Fern Fanclers"

Held in the Zoo's Rondavel price includes a continental breakfast, slide show, demonstrations and a "Self-Guided" tour of the plants presented in the program. For more information call (619) 231-1515 ext.412.

BUDGET APPROVAL SOUGHT

At the April 13th General Meeting members will be asked to approve an operating budget for 1988. Copies of the proposed budget will be available prior to meeting time.

FIVE GARDENS TO OPEN FOR
SDS 2nd Annual EPI CARAVAN

Diversity will be the theme when 40 anxious Epi Lovers visit 5 gardens on the Epi Caravan, May 21st.

According to Chair Pat Barrett, the tour will start at 9 am, deep in the East County and slowly work it's way to the cool breezes of the south bay. Specific locations will be announced at the April general meeting.

As was the case last year the first stop will include a continental breakfast, the middle stops various snacks and beverages finishing with a wine and cheese tasting at the last stop.

Pat will continue to take reservations until all 40 places are filled. Participants must have reservations. There is a token fee of \$1.00 for the day's adventures.

Car Pooling is encouraged, and directions from one stop to the next will be provided.

MARGE COCKE

Marge (Mrs. Wressy) Cocke passed away in early March. Mrs. Cocke shared her husband's deep love for Epls and her many contributions to us in San Diego, will long be remembered.

DEADLINE FOR MAY IS APRIL 25th

AN INVITATION TO ARRANGE
by Margaret Blake

Last year the Society offered the membership a brand new and exciting category for the display of epiphyllums in our Mother's Day Show entitled "Epiphyllum Floral Arrangements".

The few of us who entered this unique and artistic category were pleased indeed to find our efforts so well received and appreciated. They created a stir of enthusiasm even among the club members of other floral societies in the area.

To have one of my entries judged the winner and have this fact inscribed upon the new Walter and Penny Bunker Award was most gratifying but equally rewarding was the satisfaction I gained from displaying and expressing the beauty of my epis in this new way.

I would like to urge each and every member to enter this new category in our 1988 Mother's Day Show. Turn your imagination and skills loose and let the epis do the rest.

* * * * *

RANCHO SANTA FE WANTS YOU

The Rancho Santa Fe Garden Club will present its annual flower show and plant sale, "Oh What a Beautiful Morning" on April 16th and 17th. Held at the Garden Club, Sat from 1pm to 5pm, Sun 10 to 5 in the village center of Rancho Santa Fe. Admission is free.

CUTTINGS ARE NEEDED AGAIN

Epi lovers can make a significant contribution to the Society and to others by donating cuttings in the next few weeks.

Cuttings are needed to sell at the Mother's Day Show and at the Wild Animal Park's Epi And Fuchsia Show, as well as the S.D. Botanical Garden Foundations annual plant sale. In addition SDES has traditionally shared its leftovers with ESA for their sale.

Please bring your cuttings to the April meeting or make arrangements with the appropriate person.

Charles Coons will handle the regular cuttings for Mother's Day, Ernest Angus the special cuttings. Sean Minogue will gladly accept your cutting contributions for donation to the Wild Animal Park. Kathie vanArum will take cuttings for the Botanical sale.

The usual guidelines for cuttings should be observed. Cuttings should be good-looking and viable, taken from plants that have bloomed for you so that you are certain that the plants are what they are labeled.

Cuttings should be marked with name, flower size (sm-med-lg-xlg) and color (mark "PK" for pink, "PUR" for purple, "O" for orange, "Y" for yellow, "R" for red, "W" for white and "Multi" when that is appropriate). Cuttings should be separated by color.

Your epi cuttings will help our group and others to grow.

SAN DIEGO EPIPHYLLUM SOCIETY'S FLOWER SHOW AND CUTTING SALE
MAY 8, 1988

FLOWER SHOW EXHIBITOR GUIDELINES

Although there will be 48 tables in the Show room, at this writing there are only 4 left. Anyone wishing to reserve a table should do so at the earliest time possible.

Saturday night is set aside to bring in the larger props for your exhibits. This saves time on Sunday morning to just arrange and label your flowers. Those wishing to use the Society's props should reserve them. Set up on Saturday will be from 5pm to 9pm.

All flowers should be labeled. All the flowers on one's own table need not have the exhibitor's name on the label, but exhibitors who show flowers on other exhibitor's tables or the Society table should have their name on the label with the flowers name. Labels will be available at the April meeting for those wishing to fill them out early.

Please bring the trophies to the April meeting (last year's winners). That way we will know that they will be there for the Show and there will be one less thing to forget Sunday morning.

All exhibits should be completed by 10:00 Sunday morning. All boxes must be removed from the room and the floor swept. See the Show Program for additional information. No spraying of any kind is allowed.

Don't forget to bring your contribution to the pot-luck. We will eat in the Pratt Loggia, located on the second floor of the Casa del Prado (the elevator is on the south side of the CdP courtyard). This room will offer more space and privacy, as well as a lovely view of the Casa de Balboa.

After the show exhibitors should assist in cleaning up. The table covers must be wiped clean, dried and rolled up. Please, everyone pitch in, because we are all going to be tired.

Please do not tie up carts for more time than is necessary.

Please be sure that there is no water, errant flowers or petals on the floor.

If there are any questions please call,

Thank you,

Rick Latimer,
Show Chairman

**IT'S EPI TIME AT
THE WILD ANIMAL PARK**

The annual Epiphyllum and Fuchsia Show at the San Diego Wild Animal Park will be held on April 30th and May 1st. SDES will be on hand with displays and cutting sales plus an SDES Pot-Luck, which will be held on Saturday at 3:30 pm.

A work party will be held at the WAP Epi House to make cuttings and otherwise prepare, on Saturday April 16th at 9:00 AM. Sign-up to work at the April 13th General Meeting.

Due to construction in the gift shop area, our display and sales tables will be moved about twenty yards down the path to the area across from the Animal Care Center (next to the Koalas). The area will be covered with shade cloth but exhibitors and volunteers should be ready for some sun.

Exhibitors should sign-up at the April Meeting for either or both show days. Sign-ups for the Pot-Luck also will be taken. You may also make arrangements to participate by calling event coordinators Sean Minogue (475-4478) or Dick Chadwick (463-4316).

Procedure for set-up remains the same, you may enter the park at 7 am Sat. and Sun. Construction at the park has yet to begin, but it is possible that vehicle access to the area in which our show will be held may be restricted. Your early arrival will insure that set-up can be completed by the Park's 9am private vehicle curfew.

**THREE FLOWER SHOWS,
TO VIEW OR VOLUNTEER ?**

Three shows in the next few weeks offer a chance to enjoy, participate or both.

The annual Coronado Flower Show will return on April 16th and 17th under the tents in Spreckles Park. SDES will again be represented by Mr. and Mrs. George Watson who would greatly appreciate your help.

Details will be available at the April 13th General Meeting.

That same weekend in Del Mar SDES will participate at the 3rd San Diego Home Garden Magazine Show.

Lois Tripp will be looking for volunteers at the April 13th meeting.

The Second Mira Mesa Mall Mother's Day Flower Show will be held on Saturday May 7th and for the second year SDES will be represented by Nate and Dorothy Ogdon and George and Madeline French.

DON'T FORGET ESA AND SOUTH BAY

Just when you thought it was safe to go back to the lath house....

Epiphyllum Society of America will hold its annual flower show the week after ours and South Bay (LONG BEACH) Epiphyllum Society has theirs the week after that. See next month's Epi News for dates times and locations. Both of these shows are a great way to see epis and meet Epi People and Epi Experts.

THE SCHMEDDING REPORT

Our speaker for the March meeting was a most interesting young man. His name was William Baker. He said that he isn't used to speaking in front of a group, but you wouldn't know it, his "MIKE" presence is very good.

Bill Baker has been all over South and Central America. He showed us so many great pictures of wild rhipsalis, with tongue tangling names that I can't begin to tell you what they were.

He also showed slides of other epiphytic cacti and some desert types.

There were several announcements made at the meeting.

We are in need of a refreshment chairperson. If we are to continue having our coffee break, we must have some volunteers. Penny Bunker did it for years, surely there must be someone out there that could do it for a couple of months, and someone else for a couple more, and so on. Come on people do your stuff.

Please sign up at the next meeting for your table at the Mother's Day Show. Also, what you would like to bring for the Pot Luck lunch for the workers. Also, please, on the day of the show, come to the cutting area and relieve the workers out there so they can get up and stretch and get some lunch.

During the big freeze this winter, the Wild Animal Park lost a great many epis. If you

have more plants than you need and would like to give some to the WAP, call Dick Chadwick. He will make arrangements to either pick them up at your home or you can take them to him. Please make sure that the epis you contribute are in good shape and correctly named.

I also wish to extend the sympathy of the Society to Chuck Everson (of Rainbow Gardens), for the loss in January, of his Mother.

- Gene Schmedding

* * * * *

GETTING RID OF HOUSEHOLD HAZARDOUS WASTE

Many household products contain toxic chemicals, when you are ready to dispose of them, they become hazardous waste. Paints, solvents, auto care products and PESTICIDES should never be thrown in the trash, they may cause injury to sanitation workers, nor should they be poured down a sink or storm drain because of the potential for contaminating our environment. What then, can you do to safely dispose of household hazardous waste?

Call County of San Diego Environmental Health Services at 236-2267. They can tell you about their week-day drop off program, a series of special Saturday drop offs at various locations throughout SD County or in extreme cases they can arrange special handling.

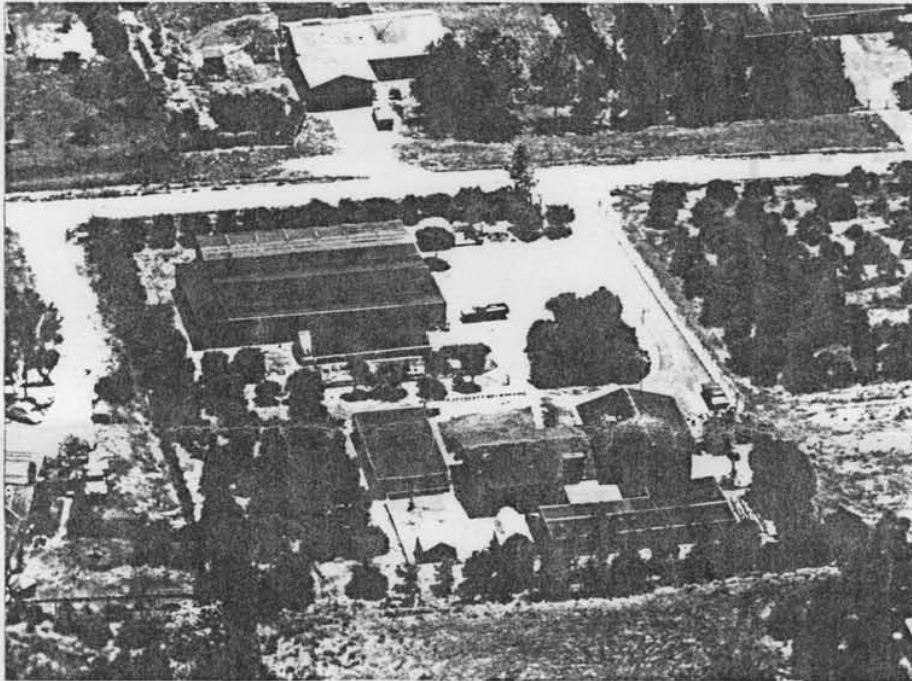
Household hazardous wastes can endanger you and your neighbors more easily than you might think. A little care can prevent a tragedy.

MARK CUTTINGS FOR CLARITY

When preparing your epi cuttings for Mother's Day please remember that confusion can easily be avoided by careful labeling. Epi cuttings should be marked with their flower size (S-M-L-XL). and the color of the blossom

(marking "Pur" for purple, "PK" for pink will help greatly, other color abbreviations should be obvious). Remember that your generous gifts of healthy, favorite cuttings for our Mother's Day Show will keep the Society active year-round.

RAINBOW GARDENS NURSERY & BOOKSHOP



ATTN: EPI LOVERS. COME VISIT OUR BRAND NEW 24' x 60' SALE HOUSE. WE HAVE 1000's OF PLANTS FOR SALE---EPIES, RHIPSALIS, XMAS/EASTER CACTUS, HOYAS, HAWORTHIAS, MORE.

OUR BOOKROOM IS LOADED WITH ALL THE BOOKS (NEW, OLD, OUT OF PRINT) ON EPIPHYLLUMS, CACTI, SUCCULENTS, BROMELIADS, FERNS, SOUTH AFRICAN DESERT/WILDFLOWER, + POSTCARDS AND STATIONERY ITEMS.

HOURS: EVERY SATURDAY IN APRIL AND MAY WITHOUT AN APPOINTMENT. HOURS: 9:00-4:00PM. OTHER DAYS (WEDNESDAY THRU FRIDAY), IT'S BEST TO CALL FIRST BEFORE COMING.

NURSERY/BOOKROOM

1444 E. Taylor Street
Vista, CA 92084
Jerry Williams
Chuck Everson

(ALWAYS CLOSED ON
SUNDAYS/MONDAYS)

HOURS/TELEPHONE

Wednesday thru Friday 9-4(Call)
Saturday (April & May) 9-4
Saturday (June thru March):Call
(619) 758-4290

(unpaid advertisement)

NON-PROFIT* ORG.
U.S. POSTAGE PAID
PAID
SAN DIEGO, CA
PERMIT NO. 2646

S D E S
P.O. BOX 126127
SAN DIEGO, CA 92112-6127

EPI NEWS IS PUBLISHED BY SAN DIEGO EPIPHYLLUM SOCIETY, INC.

SDES
P.O. Box 126127
San Diego, CA 92112-6127

EPI NEWS EDITOR
C/O Sean Minogue
808 Ethel Place
National City, CA 92050

SDES OFFICERS
Milton D. Turner, President
Kathie vanArum, 1st V. Pres.
Rick Latimer, 2nd V. Pres.
Richard Plock, Treasurer
Margaret Pethley, Rec. Sec.
Helen Barkdoll, Cor. Sec.
Marjorie Marshall, Mem. Sec.

Executive Board Members

Terms to 12-88
Jeannie Burger, Charles Coons,
Sean Minogue

Terms to 12-89
Ernest Angus, Pat Barrett,
Jean Gray, Vernon Hook,
Gene Schmedding

MEMBERSHIP INFORMATION

Membership in SDES is \$3.00
per person or organization,
domestic. International rates
\$12.00.

All membership inquiries
should be sent in care of the
Membership Secretary at the
SDES Post Office Box.

SDES HONORARY DIRECTORS
John Clancy, George French,
Frank Granatowski, Don Irwin,
Elinor Latimer, Gene Lund,
Fern Peacock