



Epi News

San Diego Epiphyllum Society, Inc.

December 2025
Volume 50 Number 12



2025 Photo Contest Best In Show

'English Rose'

Entrant: Jeff Hendershot

Size: Small

Photo: Jeff Hendershot

San Diego Epiphyllum Society, Inc. (SDES)

P.O. Box 126127
 San Diego, CA 92112-6127
Epi News is published monthly by
 San Diego Epiphyllum Society, Inc.
 SDES Website: <https://sdepies.org/>

Copyrights

Copyrights of byline articles belong to the authors. Other contents ©2025 SDES. All rights reserved. Photo credit SDES archives unless noted.

Editor: JK Hendershot
EpiNews@sdepies.org
 Design and layout: JK Hendershot

Membership

Single \$15.00 per year.
 Dual \$20.00 per year.
<https://san-diego-epiphyllum-soc.square.site/>

Have You Moved?

If you have moved or recently changed your physical OR email address, please update your address so that you can continue to receive your newsletter without interruption.

Send your updates to:
 San Diego Epiphyllum Society c/o Membership
 P.O. Box 126127, San Diego, CA 92112-6127.

OR email Membership@sdepies.org
 For faster response mail directly to Beth Jackson, Membership Secretary—their address can be found on the membership roster.

Inside This Issue

President’s Corner / Meeting Program	3
Keeping in Touch	4
Now Is the Time Checklist/ 2026 MDS Theme	5
Election Time Is Near / Slate of Officers	6
Workshop Corner: Pests That Plague Our Plants	7 - 8
SDES 2026 Calendar Year Budget	9
SDES 2026 Calendar Year Budget / Photo Contest	10
2025 Photo Contest Single Bloom Winners	11
2025 Photo Contest Multi- Bloom Winners	12
2025 Photo Contest Epi Art Winners	13
2025 Photo Contest People’s Choice & B.I.S.	14
SDES Holiday Banquet	15
SDES Instagram, Refreshments + News Notes	16
Member Wish List, Off-Season Blooms	17
Epi Resource Page	18
SDES Photo Contest Entries	19
We Leave You With This: More Beautiful Blooms	20

Calendar of Events

- December 6 [ESA Holiday Luncheon](#) 12pm RSVP [here](#)
- 10 SDES Holiday Banquet
- 16 [LA C.&S.S. Holiday Sale & Auction](#)
- 24 Board Meeting (moved to January 7)
- January 7 December Board Meeting
- 14 General Meeting
- 28 Board Meeting
- February 11 General Meeting
- 25 Board Meeting

General Meetings are held on the second Wednesday of each month. We are doing our best to have a presence both in person and online. The meeting begins at 7:30 p.m. and the pre-meeting workshop is at 7:00 p.m. The Zoom room will open at 7:00 p.m. Check your email for instructions and links. Board Meetings are the fourth Wednesday of the month at 7:00 p.m., and are online. All members are welcome to attend the board meeting. If you are interested in attending, please request the online Zoom link from the Membership Secretary, or the President.



On the Cover:
 December 2025

Photo: Jeff Hendershot

The 2025 ‘Best In Show’ was awarded to Jeff Hendershot, who entered a beautiful photo in the Single Bloom Category with: ‘English Rose’ - WCx096(HST) 1987 Solid, clear lavender with tan-pink outer petals. Loose, double, cup and saucer form. Flat basket growth. {S} ‘Fern La Borde’ x ‘Dixieland’. Reg. #10452

President's Corner — *From President Carmela Griswold*



As we arrive at the final month of the year, each of you has helped make this a truly memorable year for the San Diego Epiphyllum Society, and I am profoundly grateful for the dedication, kindness, and curiosity you bring to our community.

I find myself reflecting on the significant moments that shaped 2025. Our Mother's Day Show & Sale was a wonderful success, thanks to the many members who came together to make it happen. Then, in July, we received the heartbreaking news that our 49-year contract with the Safari Park had come to an end.

Yet, October brought a remarkable show of teamwork and resilience. Ron and Velma Crain, along with Sandra Chapin, organized a group of volunteers who worked tirelessly to relocate our beloved epi collection to members' homes for fostering until we secure a new location to showcase them. Once again, our members united to ensure the plants would be moved by the December 31st deadline. My heartfelt thanks to Sandra Chapin, Ron and Velma Crain, Dean Delibertis, Linda and Keith Bennett, Tim Paule, David Cheever, Ken Maculan, Barb Alvarez, Oliver Lapuebla, Michal McKee, Gerry Mikas, and Ellen McCollum for their hard work. A million thanks as well to all who are fostering plants—especially Janice Wakefield with over 200 plants and Paula Reynolds with more than 300.

I look forward to seeing your smiles at our Holiday Banquet on December 10th. May your holidays be peaceful, warm, and filled with beauty in every form!

Happy Holidays to all!

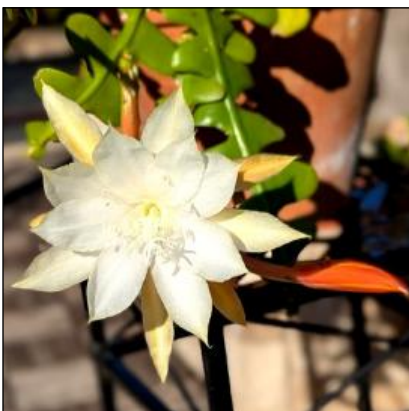
Carmela

Meeting Program & Workshop

Pre-Meeting Workshop: December's pre-meeting workshop has been cancelled due to our Holiday Banquet. Join us in January for the workshop which will be held in Casa Del Prado Room 104 at 7:00 p.m.

December Program: SDES Holiday Banquet and Installation of Officers will be held on Wednesday, December 10, 2025, at 6:30 p.m., in lieu of our December general meeting that is held in Casa Del Prado Room 101. The event will be hosted at The Butcher Shop Steakhouse, 5255 Kearny Villa Road, San Diego, CA. Full details can be found on page 15 of *Epi News*. We look forward to seeing you!

November Program: Our November meeting was held on November 12, 2025 in Casa Del Prado Room 101 at 7:30 p.m. Last month's presentation was a slide show announcing the winners of the Annual Photo Contest, which showcased the wonderful flower photos that were entered in the competition.



Carmela Griswold submitted two beautiful photos of Disocactus Anguliger (formerly classified as Epiphyllum Anguliger) which bloomed earlier this month. She added that the fragrance on the blooms were amazing.

Photo: Carmela Griswold.



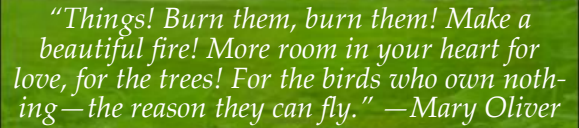
We Are Keeping in Touch

Our members are the most important part of our society. Together we create more beauty to enjoy.

As with any group, we are more effective and stronger when we are unified together—and our membership spans the globe! Although the epies are what bring us together at first, lifelong friendships are made in the society. Knowledge, plants, passions, and stories of those who came before us are shared between members—and everyone has fun!

Membership Secretary: Beth Jackson at 858-692-0314 or Membership@sdepies.org

Newsletter Editor: JK Hendershot at 619-301-3587 or EpiNews@sdepies.org



"Things! Burn them, burn them! Make a beautiful fire! More room in your heart for love, for the trees! For the birds who own nothing—the reason they can fly." —Mary Oliver



Photo Contest entry 'Orangutan' MIY
Photo: Doug Hillman

Keeping You in our Thoughts and Prayers
Ron Finchum, Mildred Mikas, and Jim Nones

New Members
Ramon Carrera, Cathedral City, CA
Bob Hiler, Carlsbad, CA
Michael Ludwig, San Diego, CA



Another entry 'Shimmer' SHI
Photo: Arlene Hillman

We Need Your Help

If you have epies (cuttings or plants), succulents, interesting garden items, or other plants you would like to donate to stock and increase the variety of items on our raffle table, we need your help. To make a donation or to obtain more information on how you can help, please contact director, and raffle table coordinator, Paula Reynolds via email at paularey@aol.com with your ideas and questions.

Help Preserve a Living Treasure: Support the SDES Epiphyllum Collection

The San Diego Epiphyllum Society proudly stewards one of the world's most extensive collections of epiphyllum hybrids—a dazzling array of color, form, and botanical wonder. This remarkable living archive is lovingly maintained by a team of passionate volunteers who dedicate their time and expertise to its care. To ensure the continued vitality of this collection, SDES relies on the generosity of donors. Every contribution helps sustain the beauty and legacy of these extraordinary plants.

Leave a Lasting Legacy: Consider including SDES in your will or trust. Your planned gift will help safeguard this irreplaceable collection for generations to come..

Now Is the Time—Seasonal Checklist

- ✓ Watch the weather reports for freezing temperatures. Make plans for protecting epies from bad weather as we get further into winter. In regions of the country that freeze, plants can be protected for a short period of time with newspaper—but plastic sheeting will provide more durable protection.
- ✓ If epies are subjected to hail, rinse the ice off immediately. Prolonged contact to ice can damage the plants more than the impact of the hail itself does.
- ✓ Protect your epies against strong winds. Plants in hanging baskets or pots are subject to broken branches as they bump into other pots or are knocked to the ground due to high winds.
- ✓ Winter rains are good for epies. Collect rainwater in opaque containers and cover containers to keep the debris out. Do not allow the pots that are on benches or shelves to sit or remain in puddles of water.
- ✓ Monitor water levels and make sure your epies do not get too much water. Water your epies if necessary—and be sure to keep a close eye on your plants. You may need to relocate your plants as the rainy season continues to ensure they do not get too much water.
- ✓ Watch for snails and slugs. During the winter months, snails and slugs become more active in the cooler, moister weather.
- ✓ Trim off all dead growth. Some plant die back is natural. If the die back starts from the roots instead of the tips of the stems, you may want to remove the plant from its pot to check the roots.



Election Time Is Near— “Many hands make for light work” —John Heywood



‘The Volunteers’

Photo: SDES Archive

We need your help, so please consider volunteering for any position, especially if you have not yet served—the more people involved, the less any one person will have to do.

If members don’t take an active role, the society won’t be able to do as much or function as well as

We are fortunate to have so many people volunteering time and effort to make our society work well and be a success.

However, for our society to remain successful, we need you to volunteer. We

it can. SDES is an all volunteer organization, without you we would not exist! Everything we get from the society starts from what we put into the society.

There are a few positions that need to be filled at this time. If you have some skills you can offer the society please let us know. We can always use help with newsletter articles, technology, and the website. Reach out to Sandra Chapin or any of our board members—they will be happy to talk with you about helping out, and will let you know where your talents may be best utilized.

In November, the final slate of officers will be presented to the membership and at that time a formal vote will be held at the regular monthly meeting on Wednesday, November 12, 2025. Installation of the new officers will then occur in December at the annual Holiday Banquet and Installation of Officers held on December 10, 2025.

Please note the information for the Holiday Banquet and Installation of Officers can be found on the page 15 of *Epi News*.

The 2026 SDES proposed slate of officers and directors are:

President	Dean DeLibertis	Director (2026-27)	Gilbert Hatfield
1 st Vice President	David Cheever	Director (2026-27)	Linda Kruger
2 nd Vice President	Jerry Moreau	Director (2026-27)	Mildred Mikas
Treasurer	Gerry Mikas	Not up for re-election:	
Recording Secretary	Open	Director (2025-26)	Ken Maculan
Membership Secretary	Beth Jackson	Past President	Carmela Griswold



‘Abalone’ DTO

Photo: Gilbert Hatfield



‘Argus’ CALL

Photo: Gail Hatfield



‘Cuzco’ FRE

Photo: Gail Hatfield

Pho-

Workshop Corner: Pests That Plague Our Plants— Caring for Epiphytic Cacti *by Jerry Moreau*

Editor's Note: This article is a follow up to the live workshop presented by Jerry Moreau in November, prior to our general meeting. The workshop was entitled Pests That Plague Our Plants—Caring for Epiphytic Cacti.

We all love growing epiphytic cacti, whether it's the bright Christmas cactus we are enjoying now, the stunning hybrids, or any of their unique relatives. They grow with an easy elegance, bloom beautifully, and thrive when given the right balance of moisture, fertilizer, and air. Even in well cared for collections, pests can sometimes find their way in. There's no need to worry when that happens. With a little attention and a few simple steps, you can keep your cacti healthy, strong, and free from pests.

Understanding the Common Pests

Caring for epiphytic cacti is often about noticing the little details. When you understand what your plants need, it becomes easy to see when something isn't quite right. Most pest problems begin small, often with unseen insects that quietly move in. Spotting them early helps prevent damage. The most common pests that bother these plants are mealybugs, scale insects, aphids, spider mites, and fungus gnats. Each one causes problems in its own way, but they all draw sap or energy from the plant, leaving it weaker over time.

Mealybugs look like tiny white bits of cotton tucked into the joints of stems. They can also hide in the soil and feed on roots. Scale insects look like small, rounded bumps attached to the stems and pads. Aphids, which are soft and usually green or black, gather on tender new growth. Spider mites are almost invisible but leave fine webbing and stippled marks on stems. Fungus gnats are small, dark flies, and their larvae live in damp soil, feeding on roots.

It is also possible to find slugs, snails, or beetles around your plants, especially in outdoor or greenhouse settings. They chew or bore into soft tissue, leaving visible damage that can be serious if ignored.

Signs to Watch For

Your plants will give you clues if pests have arrived. You might notice yellowing stems, sticky spots, a light webbing between joints, or even a plant that wilts despite being watered. Occasionally, you'll find a powdery or fuzzy patch on the surface. The sooner you notice these signs, the easier it is to manage the problem.



AI assisted artwork: JK Hendershot

Inspect your plants regularly, turning pots and lifting stems to look underneath. Pay extra attention to tight, shaded areas where pests like to hide.

Simple and Safe Ways to Control Pests

You can often fix pest issues without using chemicals. Starting with gentle methods keeps your plants and environment safe.

Manual removal is usually the best first step. A soft brush, cotton swab, or a light spray of water can clear away many visible insects. If you spot mealybugs or scale, dipping a cotton swab in rubbing alcohol (70 percent) and dabbing affected areas works well.

Diatomaceous earth, a natural powder made from fossilized algae, can be sprinkled around the base of your plants. It kills crawling pests by drying them out but is safe for people, pets, and the environment.

Neem oil, when mixed with water and a small drop of mild soap, helps manage mites, aphids, and mealybugs. Apply it only in the shade and never when the plant is in bloom, since it can harm pollinators.

Continued

Workshop Corner: Pests That Plague Our Plants *Continued*

If you deal with fungus gnats, try using a mild hydrogen peroxide solution. A simple mixture of 3 percent hydrogen peroxide and water can clean the soil and kill all of the larvae without damaging the plant.

You can also consider biological helpers such as ladybugs or predatory mites, which naturally control pest populations without human intervention. These beneficial insects are especially useful in greenhouse or enclosed setups.

Preventing Problems Before They Start

Healthy plants are less likely to suffer from pests. Small habits make a big difference in preventing infestations.

When you bring home a new plant, keep it separate from your others for about two weeks. This short quarantine period helps you catch any pests before they spread. Ensure the area where you grow your cacti has good airflow to discourage mites and fungus gnats.

Water only when the top layer of the soil feels dry. Overwatering creates the damp conditions that pests and larvae love. Regularly remove old flowers, dried stems, and fallen leaves, since they provide shelter for insects. Refresh the soil periodically using a well-draining mix to keep roots healthy.

A quick weekly check works wonders. Spend a few minutes looking over your collection, and you'll often catch small problems before they turn into big ones.

Building a Healthy Routine

A simple maintenance routine keeps your cacti

vibrant all year long:

- Weekly: Inspect and clean plants. Remove debris and gently wipe stems.
- Monthly: Rinse pot surfaces, apply diatomaceous earth if needed, and check for early pest activity.
- Seasonally: Refresh soil, trim damaged growth, and spread out crowded plants to improve air circulation.

This rhythm helps plants stay clean, strong, and less attractive to pests.

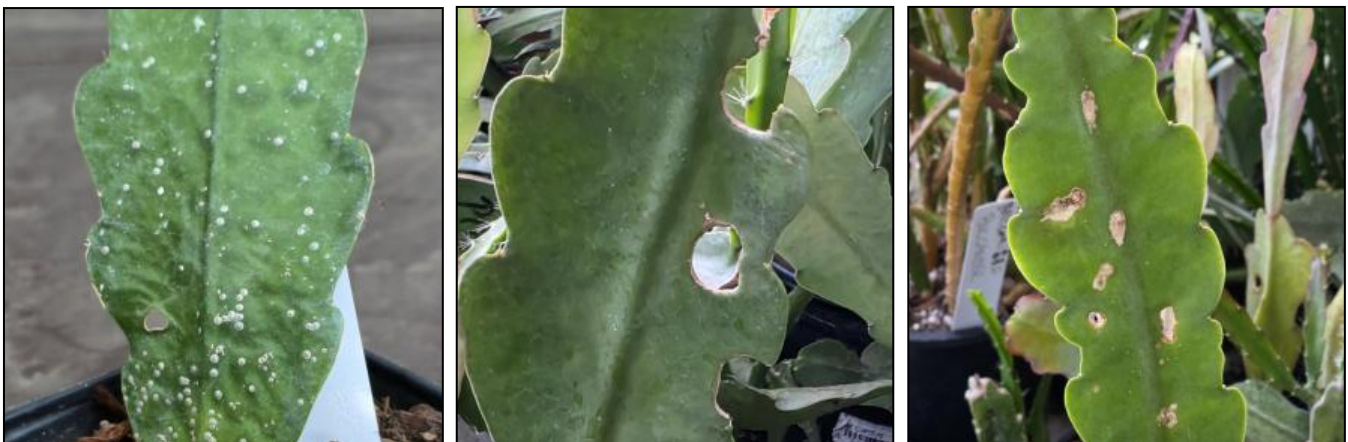
Finding Joy in the Process

Growing epiphytic cacti is a hobby full of color and calm. When you tend them with care, they reward you with dramatic blooms and strong, glossy growth. A pest sighting isn't a failure—it's just part of the natural cycle of caring for and nurturing living plants.

The habits you develop while watching for pests—patience, observation, and gentle care—make you a better grower in the long run. Over time, you'll learn to notice small changes in your plants and respond with confidence.

With thoughtful attention and steady care, your epiphytic cacti will thrive, brighten your space, and remind you why gardening is such a rewarding part of life.

A special thanks to Jerry Moreau for presenting the workshop for our members, and for taking the time to write this article so that all members might benefit from his knowledge and experience.



Several examples of epies that have suffered from the pests mentioned in the article. Photo: SDES Archives

San Diego Epiphyllum Society 2026 Calendar Year Budget

San Diego Epiphyllum Society 2026 Calendar Year Budget

January 1, 2026 - December 31, 2026

Budget Categories	Income Budget 2026	Expense Budget 2026
Sales & Membership		
Mother's Day Show and Sale	14,000	4,000
Holiday Banquet	1,500	4,000
Garden Photo Caravan	400	450
Other Society Shows and Events	4,000	
SDES Volunteer Party		650
Misc. Sales Expense		1,200
SDES Club Affiliations		300
Storage Unit Historical		1,800
Storage Unit Dry		1,100
SDES Membership Dues	2,500	
Zoom Annual Fee		180
General Membership Meeting Summary		
Program Speakers/Honorarium/Donations		500
Refreshments		300
SDES Library		100
Pre-Meeting Workshop Supplies		200
Raffle Prizes		500
Raffle table/door prizes	350	600
Cleaning Supplies		100
Newsletter Summary		
Printing		450
Editor Fee		1,200
Postage		300
Membership & Newsletter Supplies		400
Operating Costs		
Memorial & Flower Fund / Cards		500
Donations		
SDES Website		500
SDES Online Store Specific Costs		
Promotional Items		120
Miscellaneous Income		
Miscellaneous Expenses		
Audio Visual / Computer Equipment		125
SDES Post Office Box		244
California Sales Tax		1,100
California Department of Agriculture Permit		150
Surety Bond /Liability (Insurance)		1,000
CA SOS filing		25
Retained Earnings CD		650
SDES Totals:	22,750	22,744

Continued on the following page

San Diego Epiphyllum Society 2026 Calendar Year Budget

SDES members, it is that time of year again where we plan for next year's budget and provide you with a look at the upcoming fiscal year for the Society's planned income and expenses.

The 2026 operating budget can be found on the previous page and the capital plan for 2026 is included below. There are three items provided for your consideration and vote by the December 2025 general meeting to take place during the Holiday Banquet and Installation of Officers.

Questions or comments can be sent to treasurer@sdepis.org

San Diego Epiphyllum Society 2026 Calendar Year Budget

January 1, 2021 - December 31, 2026

Plant Collection Income & Expense Budget	Income 2026	Expense Budget 2026
Plant Collection Totals	\$4,500	(\$5,000)
Other Sales	1,000	
May Sales (historical)	3,500	
Soil & Supplies		(\$1,600)
Water		(\$2,400)
Liability Insurance		(\$1,000)

SDES Capital Projects	Income 2026	Expense Budget 2026
Website Refresh		5,000
Plant Collection Expansion		4,500

SDES Announces Photo Contest Winners



'Clarity's Abraxas'
Photo: Doug Hillman

The San Diego Epiphyllum Society announced the winners of its Annual Photo Contest at the November 12, 2025 general meeting. A presentation slide show was given of all submitted photographs highlighting the contest winners.

Over 50 entries were received in the category of Single Bloom, with 20 entries in the Multi-Bloom, and 9 entries in the Epi Art category. The entries in this category demonstrate ways for our members and non-members alike a to showcase their creative expression for their love of epies. And let's not forget the People's Choice category winners too!

The photographs were judged by a panel of three, on presentation (lighting, background, and overall pleasing to the eye). This is best explained by the viewer feeling they'd wished they'd taken that photo or if they'd display it on their wall.

A big thank you to all of the people who submitted photographs this year and in previous years. We hope you enjoy viewing the photos here and in future issues. Also, the slide show will be posted on the website until the end of the year.

2025 Annual Photo Contest—*And the Winners Are...* Single Bloom Category



1st Place Arlene Hillman
'Kiwi Razzle Dazzle'



3rd Place Gilbert Hatfield
'Sakurahime'



2nd Place Anna Lee
'Exotic Dancer'



Honorable Mention Gilbert Hatfield
'Sarah Courant'

2025 Annual Photo Contest—*And the Winners Are...*

Multi-Bloom Category



1st Place Gilbert Hatfield
'Don Crain'



Honorable Mention Doug Hillman
'Super Natural'



2nd Place Gail Hatfield
'Heaven Sent'

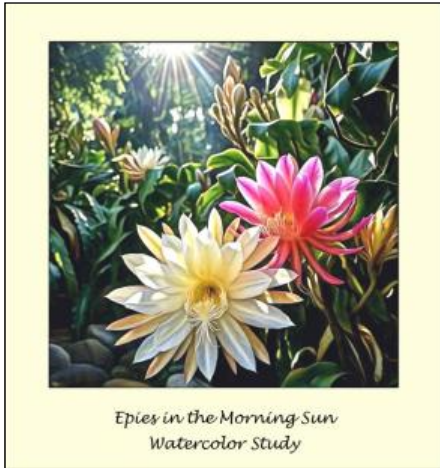


Honorable Mention Jeff Hendershot
'Sea Horses'

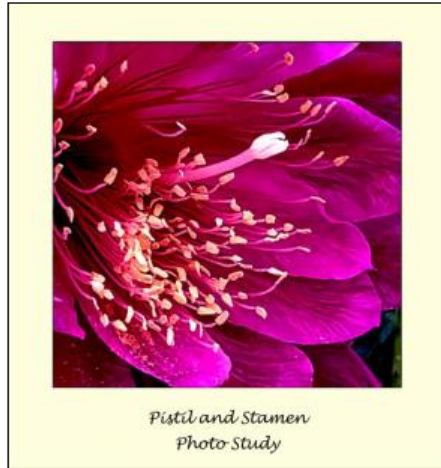


3rd Place Jeff Hendershot
'Imperial Tiger'

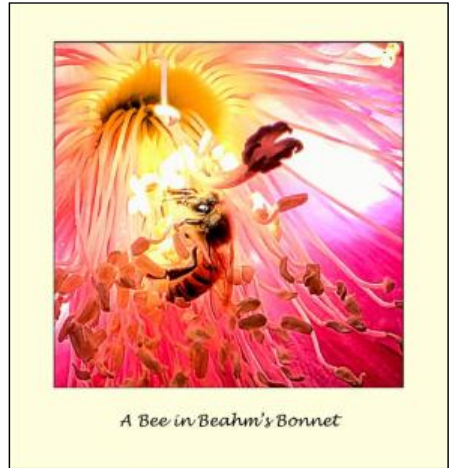
2025 Annual Photo Contest—*And the Winners Are...* Epi Art Category



1st Place Jeff Hendershot
Epies in the Morning Sun



2nd Place Jeff Hendershot
Pistil and Stamen Photo Study



3rd Place Jeff Hendershot
A Bee in Beahm's Bonnet



Honorable Mention Doug Hillman
Grooving with Clarity's Hippie



Honorable Mention Doug Hillman
Under the Sea with my Favorite Epies



Honorable Mention Arlene Hillman
What Makes Me Smile



Honorable Mention Arlene Hillman
Epic Epi Eruption

2025 Annual Photo Contest—*And the Winners Are...* *People's Choice & Best In Show*



Single Bloom People's Choice Gail Hatfield
'Dark Passion'



Multi-Bloom People's Choice Gail Hatfield
'Cabo San Lucas'



Epi Art People's Choice Arlene Hillman
Epic Epi Eruption



Best In Show Jeff Hendershot
'English Rose'



San Diego Epiphyllum Society 2025 Holiday Installation Banquet

When: Wednesday, December 10, 2025 at 6:30 p.m.
(Dinner at 7:00 p.m.)

Where: The Butcher Shop Steakhouse
5255 Kearny Villa Road, San Diego, CA 92123
(Restaurant visible from SR 163)

Phone: (858) 565-2272

Join Us for a Festive Beginning to the Holidays!

Come for an evening of fun, good food, fellowship, an optional gift exchange, door prizes and other surprises.

Entrée choice: Prime Flat Iron Steak, Salmon, Vegetarian or Gluten Free

For our optional gift exchange, you should bring a wrapped, NEW garden-related gift (\$20.00 value). Bring something you would like to receive!

The dinner price is only \$35.00¹ for members and \$85.00 for non-members. SDES offsets the difference—it's our way of saying "Thank You" for a great year.

Note: A no-host bar will be available in the Banquet Room

You can sign up online at our [secure website](#).

Make sure to choose your entrée.

Contact Mildred or Gerry Mikas (treasurer). *All credit cards accepted.*
Or you can send a check payable to 'SDES Dinner' to Mildred Mikas,
3502 Avenida Amorosa, Escondido, CA 92029

All reservations must be paid by December 1, 2025. That's when we finalize payment to the restaurant and provide a total head count of those attending.
Questions call 760-690-1124 or e-mail mvmikas@cox.net

¹Honorary Life Members are once again invited as SDES Guests.

Looking forward to seeing you at our Banquet!

Note: to receive member pricing membership dues must be paid through December 2025.

Wish List, Refreshments + News Notes

Join Us to Celebrate the Holidays

ESA Holiday Luncheon

Saturday, December 6, 2025, 12:00 Noon
Marie Callender's Restaurant & Bakery
1175 E. Alostia Avenue
Azusa, CA 91702
Tickets \$25/person includes entrée & beverage

RSVP via email to genevacoats@aol.com or 909-438-8242



'Merry Christmas' - Jim Nones



Monthly Refreshment Schedule

January	C—G	July	Society
February	H—L	August	H—L
March	M—Q	September	M—Q
April	R—U	October	R—U
May	V—B	November	V—B
June	C—G	December	Banquet

San Diego Epiphyllum Society Grows With Instagram Social

The San Diego Epiphyllum Society recently launched a new Instagram account [@SDepisociety](https://www.instagram.com/sdepisociety). At the time of this publication, we have over 70 followers and the numbers are growing every day.

For those that are new to Instagram, the platform is designed for visual content—encouraging users to express themselves and share stories through images and videos.

As we tell our story, Instagram gives us a great opportunity to connect with those social media users who have similar interests, and it provides SDES an ideal platform to share our mission as it relates to epiphyllum.

Using Instagram social media as a tool, we're able to post photos and videos from events such as our Mother's Day Show and Sale, and our Garden Caravan—as well as additional sales events and activities to attract new members to our group. And, Instagram also provides a forum to showcase the beautiful bloom photos taken by our members. Be sure to check for frequent updates and follow us today!



Member Wish List and Off-Season Blooms

If there is an epi that you are looking for it's possible someone in the society might have it and is willing to share a cutting with you.

As a service and benefit to our members this list is being included in the newsletter. Send your wish list along with your contact information to the editor to have it included here.

Sal Castellitto: aclarasd@aol.com

'Buttercup', 'Christmas Elf', 'Spanish Gold', 'Christmas Kiss', 'Kiwi Honey Gold'

Casey Gerdes: casey@yogawithcasey.com
'Crystal Flash', 'Gladys Jones', 'Glow Bug', 'Kiwi Contradiction', 'Monastery Gardens', 'Ron Crain'

Carmela Griswold:

calcolors@gmail.com 'Massimo', 'Crystal Flash', 'Tassel', 'Lilac Time'

Oliver Lapuebla: OliverRyanLP@gmail.com
'Hedgehog'

Michal McKee: folklorist@gmail.com
'Elegans Lei', 'Mojave Gold'

Priscilla Merriam: pafmerriam@gmail.com
'Frida Kahlo', 'Gold Coin', 'Oberon', 'Ron Crain'

Anh Nguyen: anhsandiego@gmail.com
'Angel Falls'

Jim Nones: jan46@gmail.com
'Mother Juana', 'Mila A. Nones'

Leonora Rodriguez: 'Lenore Overture', 'Kinneloa', 'Spanish Flare'

Paula Reynolds: paularey@aol.com
'Sunset Cliffs', 'Voltaire'

Janice Wakefield:

jwakefield.home@gmail.com
'Bobby Brynildsen', 'Jasa', 'White Cloud'



Off-Season Blooms

This list is comprised of informal research on off-season epi blooms. Here you can track which epies have been blooming consistently off-season over the years. If you would like to add to the research and list what epies have been blooming in your garden, email the editor with your list of blooms. Here's what's been blooming this past month:

Barb Alvarez (Lemon Grove): 'Rustling Flame'

Carmela Griswold (Vista): 'Cajun Beauty', 'Frida Kahlo'

Geneva Coats (Los Angeles): 'Space Rocket', 'DonOro'

Forrest Ehbrecht (San Diego): 'Harald Knebel', 'Jalisco Queen'

Barb Landon (Manhattan Beach): 'Fayette', 'Grace Ann'

Ken Maculan (Escondido) 'Lola Leah'

Jerry Moreau (San Diego) 'Christmas Pink', 'Doris W. Pittman', 'Jalisco Joy'

Paula Reynolds (Point Loma): 'Aztec Treasure', 'Harald Knebel', 'Jalisco Joy', 'Jalisco Queen', 'Jalisco Passion'

Species Blooming

Here is a list of all the species blooming:

Carmela Griswold (Vista): *Disocactus anguliger*

Dean DeLibertis (National City): *Epiphyllum oxypetalum*, *Epiphyllum hookeri*, *Epiphyllum hookeri* ssp. *Guatamalese*.

Forrest Ehbrecht (San Diego): *Selenicereus anthonyanus*, *E. hookeri*, *E. thomasianum*, *Selenicereus Pteranthus*, *Lepiesmium cruciform*.

Jerry Moreau (San Diego): *Disocactus anguliger*, *Epiphyllum Laui*.

Paula Reynolds (Point Loma): *Disocactus anguliger* - *Noller Uruapan*, *Epiphyllum crenatum* var. *chichicasten-go*, *D. macranthus* (shown right), *Epiphyllum hookeri* ssp. *guatamalese* var. *Montrose*.



Photo: Paula Reynolds

Epi News Submissions

News of interest to our SDES membership, and brief articles about our members, or our community are also welcome.

- Send any articles, photos, and questions.
- Send submissions as a Word or Google document. Items can also be sent as text pasted into an email body. No PDFs.
- Please limit formatting. Avoid excessive bolding or tabs. Avoid words in all CAPS. Please proofread and spellcheck, esp. names.
- Send photos as JPEGs attached in an email to submit to the editor.
- All photos need caption and photographer's name. Photos need photographer's permission.
- Use of photos is at the editor's discretion.
- Send videos as MP4 or as a YouTube link. Videos must have videographer's permission.
- Materials and submissions need contributor's name.
- All submissions are at the editor's discretion.
- Submissions are due by the 15th of the month for inclusion in the following month's *Epi News*.
- If you are not sure—send it anyway. Email the editor at: EpiNews@sdepies.org

Mission Statement

SDES is a community of epi growers who encourage the study of epies and the interchange of ideas on growing, displaying, and collecting epies and its related species.

SDES Officers for 2025¹

President	Carmela Griswold
1st Vice President	OPEN
2nd Vice President	Sandra Chapin
Treasurer	Gerry Mikas
Recording Secretary	Michal McKee
Membership Secretary	Beth Jackson
Immediate Past President	David Cheever
Director 2024-25	Oliver La Puebla
Director 2024-25	Linda Bennett
Director 2025-26	Ken Maculan
Director 2025-26	OPEN

¹ Click 'Title' hyperlink to email an officer.

Resources

As a benefit to our members we have compiled a list of epi resources available to you. If you are aware of any additional resources that you feel would benefit our members and you would like to have them included, please contact the editor.

Epi Nurseries:

Epi Haven - <https://epihaven.com/>

Epiphyllum World - Don Cravalho
<http://stores.ebay.com/epiphyllum-world>

Epic Foundation - Frank Süplie
www.epiphyllum.online

Garden Jewels Nursery - Katie Lutz
<http://gardenjewelsnursery.com/>

Heny's Epiphyllums - Heny Brandenburg
<https://www.facebook.com/emeraldmoonepiphyllums/>

Kakteen Haage - Ulrich Haage
<http://www.kakteen-haage.de/>

Pacific Epiphyllum - Chris Welcher
<http://www.pacificepiphyllum.com/>

Plant and Other Societies:

Cactus & Succulent Society of America

<https://cactusandsucculentsociety.org/>

SDES is an affiliate member and our members are welcome at their meetings and webinars. See their website for more information.

Epiphyllum Society of America

1st Tuesday of every month except in December or January at 7:30 p.m. <http://epiphyllums.org/>

Master Gardener Assoc. of San Diego County

<https://www.mastergardnersd.org/>

Website includes: live meetings, programs, a blog, and items of interest for gardeners.

San Diego Botanical Garden Society

<http://www.sdbgf.org/>

San Diego Bromeliad Society

2nd Saturday of the month at 10:00 a.m.

<http://www.sandiegobromeliadsociety.org/>

San Diego Turtle and Tortoise Society

Meets on Zoom every 2nd Friday

<https://www.sdturtle.org/>

South Bay Epiphyllum Society

Meets quarterly. Check Facebook for dates

www.facebook.com/groups/511560205668403



SDES Photo Contest Entries—*Enjoy the Beautiful Blooms*



'Cassis' WATTS(PITT)
Photo: Doug Hillman



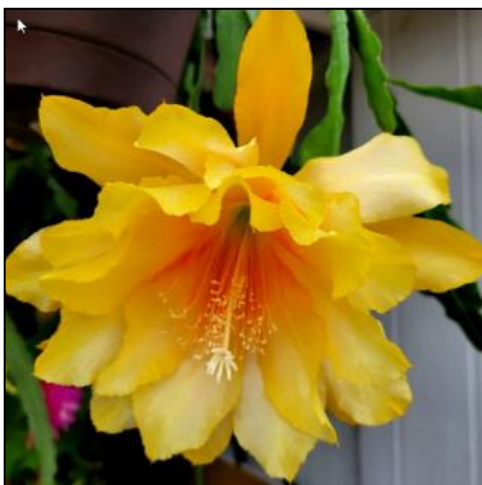
'Charlemagne' DB
Photo: Doug Hillman



'Cherry Bomb' (JKH)
Photo: JK Hendershot



'Clarity's Elin' SLL
Photo: Anna Lee



'Clarity's Abraxas' SLL
Photo: Anna Lee



'Friend Rudi' RUD
Photo: Doug Hillman

We Leave You With This — *More Beautiful Blooms*



'Dark Moon Of Lilith' HAF
Photo: JK Hendershot



'Bozo' FRE
Photo: Gail Hatfield



'Three Oranges' FLECH
Photo: Gail Hatfield



'Liberty Glow' CARR
Photo: Gilbert Hatfield



'Venetian Affair' WCx038(HKS)
Photo: Gail Hatfield



'Zeus' LAT(PITT)
Photo: Gilbert Hatfield